

Connector - C-SCMI 2,5/6,3X0,8 - 3240059

Please be informed that the data shown in this PDF Document is generated from our Online Catalog. Please find the complete data in the user's documentation. Our General Terms of Use for Downloads are valid (<http://download.phoenixcontact.com>)



Flat connector, blue, 1.5 - 2.5 mm², 6.3 x 0.8

Product Features

- Electrolytic tin plating
- Hard-soldered crimping zone for maximum pull-out forces
- Halogen-free
- 'EASY ENTRY' for easy and reliable conductor entry



Key commercial data

Packing unit	1 1
Minimum order quantity	100 1
Weight per Piece (excluding packing)	1.2 GRM
Custom tariff number	85366990
Country of origin	China

Technical data

Dimensions

Length (b)	22.5 mm
Width (a)	6.3 mm
Length of insulation sleeve (c)	11 mm
Inner dimension of the insulating collar (d)	4.5 mm
Material thickness (g)	0.8 mm

Ambient conditions

Ambient temperature (operation)	-20 °C ... 105 °C
---------------------------------	-------------------

General

Color	blue
-------	------

Connector - C-SCMI 2,5/6,3X0,8 - 3240059

Technical data

General

Stripping length	8 mm
Components	Halogen-free
Material	Brass

Classifications

eCl@ss

eCl@ss 4.0	27060701
eCl@ss 4.1	27060701
eCl@ss 5.0	27400201
eCl@ss 5.1	27400201
eCl@ss 6.0	27400201
eCl@ss 7.0	27400201
eCl@ss 8.0	27400201

ETIM

ETIM 2.0	EC000005
ETIM 3.0	EC000005
ETIM 4.0	EC001052
ETIM 5.0	EC001052

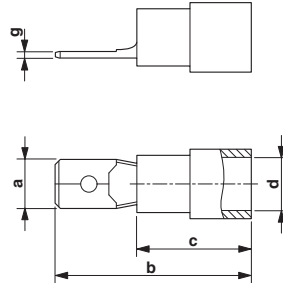
UNSPSC

UNSPSC 6.01	30211923
UNSPSC 7.0901	27121703
UNSPSC 11	27121703
UNSPSC 12.01	27121703
UNSPSC 13.2	27121703

Drawings

Connector - C-SCMI 2,5/6,3X0,8 - 3240059

Dimensioned drawing



Looking for pricing, stock, or lifecycle information?

Click below to explore more details on WIN SOURCE:

 [View 3240059 on WIN SOURCE](#)

 [Phoenix Contact Information](#)

Optimize Your Supply Chain with WIN SOURCE Solutions

-  Global Sourcing Solution
-  Obsolete Management
-  Cost Control Management
-  Shortage Management
-  Alternative Solution
-  Excess Inventory Management