

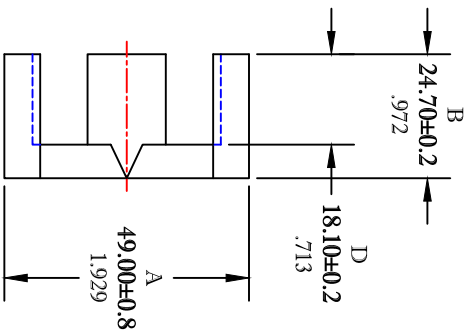


THE DATASHEET OF
9595494902



UNCONTROLLED ~ CATALOG ~ DRAWING

SIZE	PART NO.	REV.
B	9595494902	~



ELECTRICAL SPECIFICATIONS					
$\Sigma l/A$ (mm ⁻¹)	l_e (mm)	A_e (mm ²)	V_e (mm ³)	A_{MIN} (mm ²)	A_L (nH) @ 1 kHz <10gauss
.53	114.4	213.5	24420	209	5700±25%

MATE PAIR CLAMPING FORCE = 10 LBS.

POWER LOSS @ 25°C
 $F = 100$ KHZ, 2000g, P.L. ≤ 13.7 WATTS
 POWER LOSS @ 100°C
 $F = 100$ KHZ, 2000g, P.L. < 12.3 WATTS

DIMENSIONS
 OLD NUMBERS ARE IN MILLIMETERS
 LIGHT NUMBERS ARE IN INCHES

FAIR-RITE PRODUCTS CORP.

TITLE		ETD CORE	
DRAWN BY	DATE	SIZE	PART NO.
LSERENCISCS	07-13-2018	B	9595494902
CHKD BY		SCALE	NONE
APPRVD BY		SHEET	1 of 1
		REV.	~

FR# 95

Looking for pricing, stock, or lifecycle information?

Click below to explore more details on WIN SOURCE:

 [View 9595494902 on WIN SOURCE](#)

 [FAIR-RITE PRODUCTS](#) Information

Optimize Your Supply Chain with WIN SOURCE Solutions

-  Global Sourcing Solution
-  Obsolete Management
-  Cost Control Management
-  Shortage Management
-  Alternative Solution
-  Excess Inventory Management