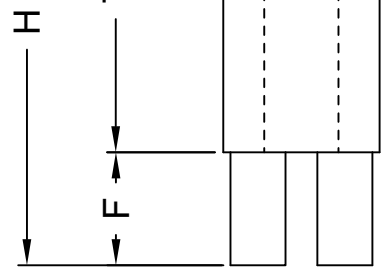
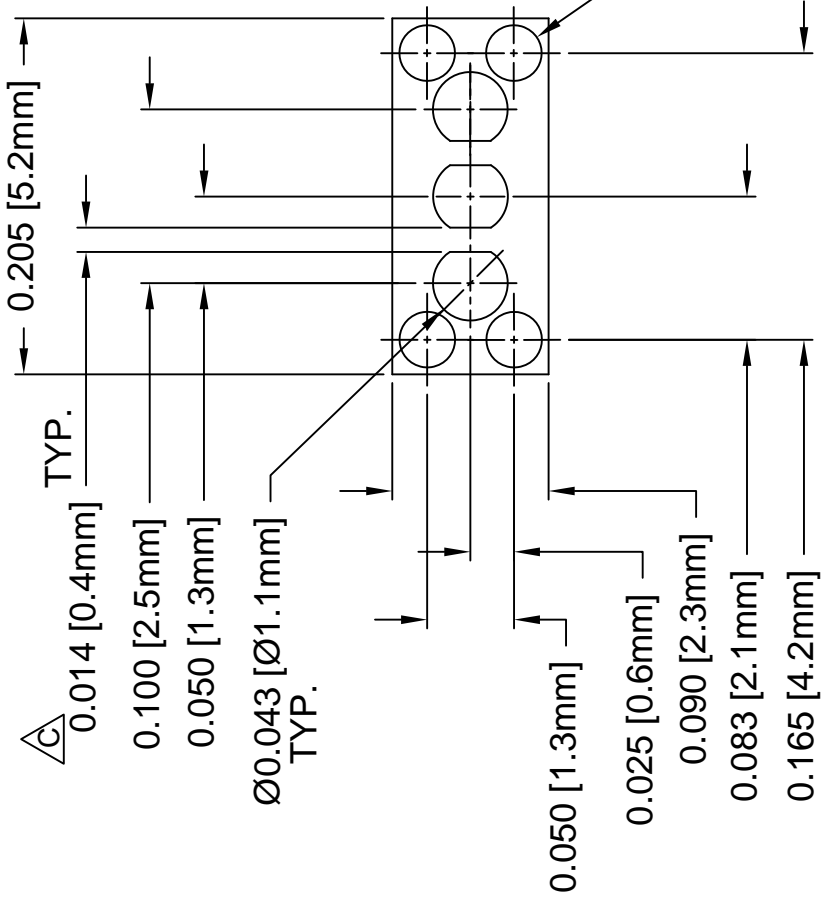


REV.	
A	Engineering Release
B	Release for Quotation
C	ECO#421, Productivity
D	Removed Material C



PART NO.	H	T	F
RL3-360	.360 (9.1mm)	0.340 (8.6mm)	0.010 (.25mm)
RL3-380	.380 (9.7mm)		0.020 (.51mm)
RL3-400	.400 (10.2mm)		0.030 (.76mm)
RL3-420	.420 (10.7mm)		0.040 (1.0mm)
RL3-440	.440 (11.2mm)		0.050 (1.3mm)

PART NO.	H	T
RL3-460	.460 (11.7mm)	0.340 (8.6mm)
RL3-480	.480 (12.2mm)	
RL3-500	.500 (12.7mm)	
RL3-520	.520 (13.2mm)	
RL3-540	.540 (13.7mm)	

STANDARD TOLERANCES
(UNLESS OTHERWISE SPECIFIED)

DECIMALS	ANGLES	X°
.X ±.1		
.XX ±.01		
.XXX ±.005		

DESIGNED: **D. Green** DATE: **06/06**
 CHECKED: **M. Chen** DATE: **10/1**

- MATERIAL: NYLON 6/6, 94V-0, WHITE.
- GENERAL SPECIFICATIONS: BIVAR MOLDED COMPONENT SPECIFICATION BV00-E101.

Looking for pricing, stock, or lifecycle information?

Click below to explore more details on WIN SOURCE:

 [View RL3-480 on WIN SOURCE](#)

 [Bivar Inc. Information](#)

Optimize Your Supply Chain with WIN SOURCE Solutions

-  Global Sourcing Solution
-  Obsolete Management
-  Cost Control Management
-  Shortage Management
-  Alternative Solution
-  Excess Inventory Management