



**THE DATASHEET OF  
D25S23A4GV00LF**





## D-Sub Standard Board Mount Connectors

Amphenol's FCI D-Sub connectors are part of an industry standard for applications requiring robust and reliable connectors. These proven D-Sub connectors are one of the most popular Input/Output interconnects, addressing a wide variety of applications in Telecommunications, Data, Consumer Industrial, Military, Instrumentation and Medical. Since many years Amphenol FCI has been offering a wide range of D-Sub connectors to meet various design requirements including those in harsh environment.

The standard density D-Sub series are widely used for numerous applications in many market segments. Amphenol FCI offers Delta-D (single shell design) and Frugal-D (two shell design) under this category. Standard density D-Sub PCB mount connectors available in straight and angled version. They come with a large number of mounting options.



### TARGET MARKETS



### FEATURES

- A Basic I/O connector comes with five shell size and housing design
- Has a D-shaped shell design
- Meets DIN 41652 and MIL-C-24308 dimensional standards
- Available in Straight, Angle, Wire Wrap terminations
- Delta-D design (1 shell + 1 housing) with stamped & formed contacts
- Various PCB and Panel mounting accessory options available
- Lead-free and RoHS compliant

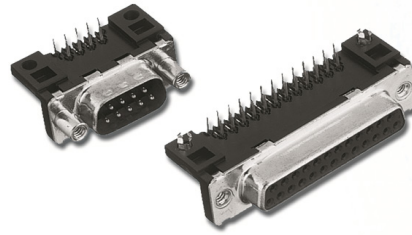
### BENEFITS

- Most popular Rugged and sturdy I/O connector
- Supports the need for polarisation
- Interchangeable and intermateable with other makes
- Support different PCB mounting requirements
- Price competitive
- Wide variety of choices for secure connection
- Meets environmental, health, and safety requirements

# RIGHT ANGLE SOLDER TO BOARD



- In compliance with DIN 41652



## ORDERING INFORMATION

|          |           |          |            |          |           |             |
|----------|-----------|----------|------------|----------|-----------|-------------|
| <b>D</b> | <b>25</b> | <b>P</b> | <b>13A</b> | <b>4</b> | <b>GV</b> | <b>00LF</b> |
|----------|-----------|----------|------------|----------|-----------|-------------|

Series: **D**

Number of Contacts: 09, 15, 25, 37

Contacts: Pin (P), Socket (S)

RoHS Status: Standard, RoHS compatible | 00LF

| Durability                                    |   |
|---|---|
| Standard class (≥200 mating/unmating)         | 4 |
| High performance class (≥500 mating/unmating) | 6 |

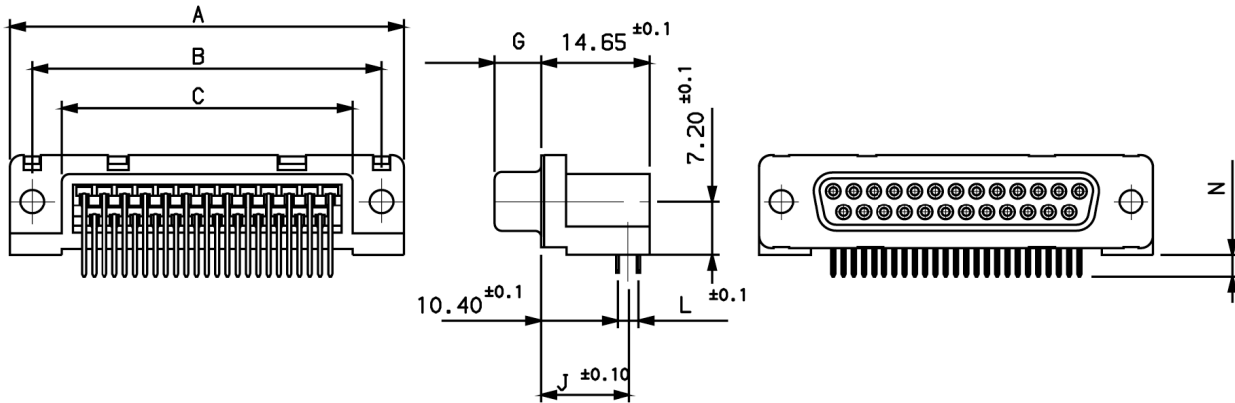
| Termination                    |                 | Code                  |       |
|--------------------------------|-----------------|-----------------------|-------|
| Type                           | Footprint/Pitch | Length of Termination |       |
| Right angled – Europe standard | 10.4/2.54mm     | 2.90                  | 13A ✓ |
| Right angled – Europe standard | 10.4/2.54mm     | 3.70                  | 13B   |
| Right angled – Europe standard | 10.4/2.84mm     | 2.90                  | 23A   |
| Right angled – Europe standard | 10.4/2.84mm     | 3.70                  | 23B   |
| Right angled – US standard     | 8.08/2.84mm     | 3.18                  | 33E ✓ |

| Mounting Options                                   |      |
|--|------|
| Standard hole                                      | PA   |
| Threaded insert M3                                 | PL   |
| Threaded insert UNC 4–40                           | PX   |
| Female screw UNC 4–40                              | PV   |
| Harpoons + insert M3 + elec. continuity            | GL   |
| Harpoons + insert UNC 4–40 + elec. continuity      | GX ✓ |
| Harpoons + female screw UNC 4–40+ elec. continuity | GV ✓ |
| Harpoons + female screw M3 + elec. continuity      | GI   |
| Elec. continuity                                   | UA   |
| Insert M3 + elec. continuity                       | UL   |
| Insert UNC 4–40 + elec. continuity                 | UX   |
| Female screw UNC 4–40 + elec. continuity           | UV   |

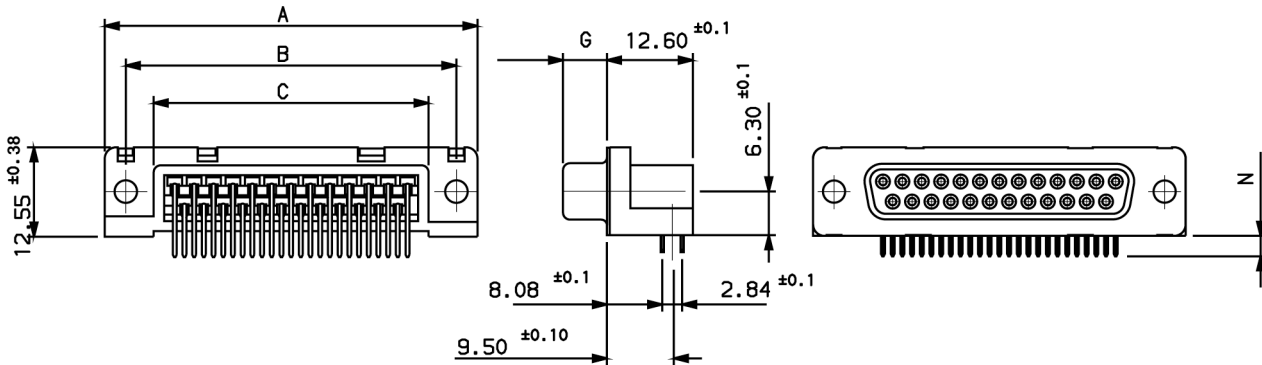
## ► D-Sub Standard Board Mount Connectors

### SPECIFIC DIMENSIONS

#### EUROPE STANDARD



#### US STANDARD



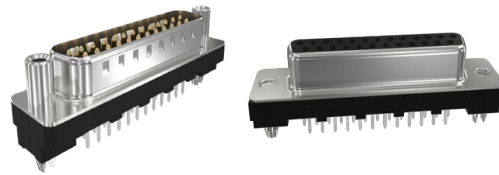
|    |   | A $\pm 0,38$ | B $\pm 0,12$ | C $\pm 0,10$ | G $-0/+0,25$    | J $\pm 0,10$ |       | L $\pm 0,10$ |      | N $\pm 0,30$       |            |      |
|----|---|--------------|--------------|--------------|-----------------|--------------|-------|--------------|------|--------------------|------------|------|
|    |   |              |              |              |                 | Termination  |       | Termination  |      | Termination Length |            |      |
|    |   |              |              |              |                 | 13           | 23    | 13           | 23   | 13A<br>23A         | 13B<br>23B | 33E  |
| 09 | P | 30.81        | 24.99        | 16.96        | 5.90 $-0/+0,15$ | 11.67        | 11.82 | 2.54         | 2.84 | 2.90               | 3.70       | 3.18 |
|    | S | 30.81        | 24.99        | 16.96        | 6.05            | 11.67        | 11.82 | 2.54         | 2.84 | 2.90               | 3.70       | 3.18 |
| 15 | P | 39.14        | 33.32        | 25.18        | 5.90 $-0/+0,15$ | 11.67        | 11.82 | 2.54         | 2.84 | 2.90               | 3.70       | 3.18 |
|    | S | 39.14        | 33.32        | 25.18        | 6.05            | 11.67        | 11.82 | 2.54         | 2.84 | 2.90               | 3.70       | 3.18 |
| 25 | P | 53.03        | 47.04        | 39.12        | 5.70            | 11.67        | 11.82 | 2.54         | 2.84 | 2.90               | 3.70       | 3.18 |
|    | S | 53.03        | 47.04        | 39.12        | 6.05            | 11.67        | 11.82 | 2.54         | 2.84 | 2.90               | 3.70       | 3.18 |
| 37 | P | 69.32        | 63.50        | 55.68        | 5.70            | 11.67        | 11.82 | 2.54         | 2.84 | 2.90               | 3.70       | 3.18 |
|    | S | 69.32        | 63.50        | 55.68        | 6.05            | 11.67        | 11.82 | 2.54         | 2.84 | 2.90               | 3.70       | 3.18 |

Dimensions in mm

## ▶ D-Sub Standard Board Mount Connectors

# STRAIGHT SOLDER TO BOARD

**UL** <sup>®</sup> **UL RECOGNISED FILE E66906**



## ORDERING INFORMATION

|          |           |          |            |          |           |             |                                  |
|----------|-----------|----------|------------|----------|-----------|-------------|----------------------------------|
| <b>D</b> | <b>25</b> | <b>P</b> | <b>24A</b> | <b>4</b> | <b>GV</b> | <b>00LF</b> | Standard series, RoHS compatible |
|----------|-----------|----------|------------|----------|-----------|-------------|----------------------------------|

|               |  |  |  |  |  |  |
|---------------|--|--|--|--|--|--|
| <b>Series</b> |  |  |  |  |  |  |
|---------------|--|--|--|--|--|--|

| Number of Contacts |  |
|--------------------|--|
| 09                 |  |
| 15                 |  |
| 25                 |  |
| 37                 |  |
| 50                 |  |

| Contacts |   |
|----------|---|
| Pin      | P |
| Socket   | S |

| Mounting Options                                    |      |
|---|------|
| Standard hole                                       | PA   |
| Threaded insert M3                                  | PL   |
| Threaded insert UNC 4-40                            | PX   |
| Female screw UNC 4-40                               | PV   |
| Harpoons + insert M3 + elec. continuity             | GL   |
| Harpoons + insert UNC 4-40 + elec. continuity       | GX   |
| Harpoons + female screw UNC 4-40 + elec. continuity | GV ✓ |

| Durability                                    |   |
|---|---|
| Standard class (≥200 mating/unmating)         | 4 |
| High performance class (≥500 mating/unmating) | 6 |

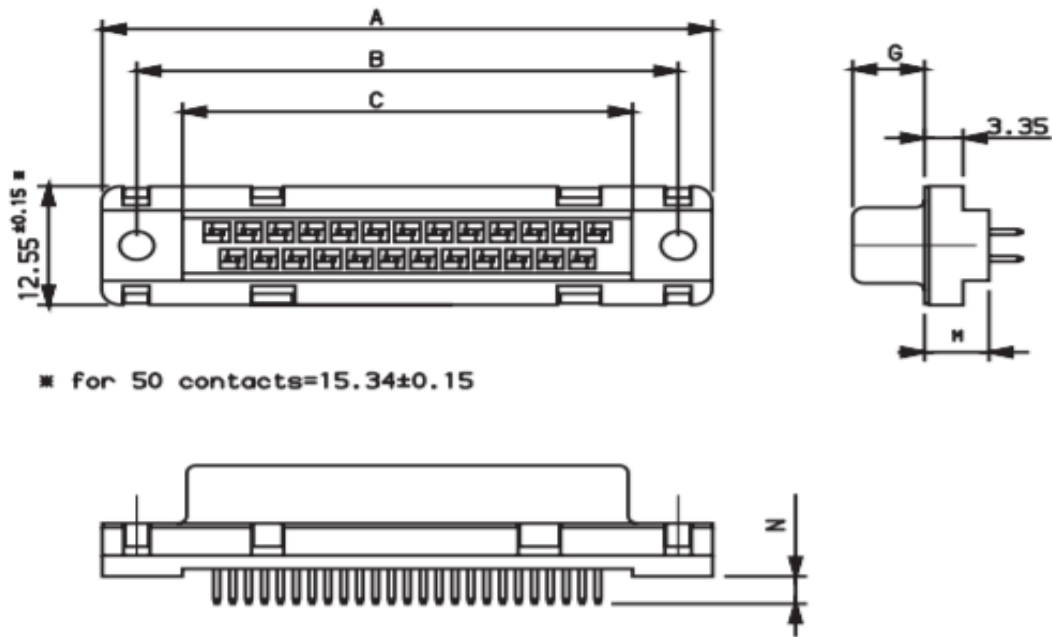
  

| Termination Type               |                 |                    |               |       |
|--------------------------------|-----------------|--------------------|---------------|-------|
| Type                           | Footprint/Pitch | Termination Length | PCB Thickness | Code  |
| Straight version (low profile) | 5.6/2.84mm      | 2.90               | 1.6mm         | 14A   |
| Straight version               | 6/2.84mm        | 2.90               | 1.6mm         | 24A ✓ |
| Straight version               | 6/2.84mm        | 3.70               | 2.4mm         | 24B   |
| Straight version               | 6.9/2.84mm      | 2.90               | 1.6mm         | 34A   |

Preferred Option ✓

## ► D-Sub Standard Board Mount Connectors

### SPECIFIC DIMENSIONS



| Dimensions |   |              |              |              |                 |              |      |      |                   |      |
|------------|---|--------------|--------------|--------------|-----------------|--------------|------|------|-------------------|------|
|            |   | A $\pm 0.38$ | B $\pm 0.12$ | C $\pm 0.10$ | G $-0/+0.25$    | M $\pm 0.10$ |      |      | N $\pm 0.30$      |      |
|            |   |              |              |              |                 | Terminal     |      |      | Terminal Length   |      |
|            |   |              |              |              |                 | 14           | 24   | 34   | 14A<br>24A<br>34A | 24B  |
| 09         | P | 30.81        | 24.99        | 16.96        | 5.90 $-0/+0.15$ | 5.60         | 6.00 | 6.90 | 2.90              | 3.70 |
|            | S | 30.81        | 24.99        | 16.96        | 6.05            | 5.60         | 6.00 | 6.90 | 2.90              | 3.70 |
| 15         | P | 39.14        | 33.32        | 25.18        | 5.90 $-0/+0.15$ | 5.60         | 6.00 | 6.90 | 2.90              | 3.70 |
|            | S | 39.14        | 33.32        | 25.18        | 6.05            | 5.60         | 6.00 | 6.90 | 2.90              | 3.70 |
| 25         | P | 53.03        | 47.04        | 39.12        | 5.70            | 5.60         | 6.00 | 6.90 | 2.90              | 3.70 |
|            | S | 53.03        | 47.04        | 39.12        | 6.05            | 5.60         | 6.00 | 6.90 | 2.90              | 3.70 |
| 37         | P | 69.32        | 63.50        | 55.68        | 5.70            | 5.60         | 6.00 | 6.90 | 2.90              | 3.70 |
|            | S | 69.32        | 63.50        | 55.68        | 6.05            | 5.60         | 6.00 | 6.90 | 2.90              | 3.70 |
| 50         | P | 67.10        | 61.11        | 54.11        | 5.70            | 5.60         | 6.00 | 6.90 | 2.90              | 3.70 |
|            | S | 67.10        | 61.11        | 54.11        | 6.05            | 5.60         | 6.00 | 6.90 | 2.90              | 3.70 |

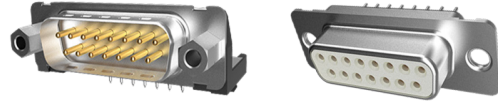
Dimensions in mm

## ▶ D-Sub Standard Board Mount Connectors

# STAMPED AND ROLLED CONTACTS



D series is the standard D-Sub full metal shell version with stamped contacts. This design is basically proposed in straight and angled version without accessories



## PART NUMBER SELECTOR

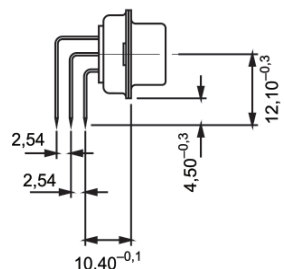
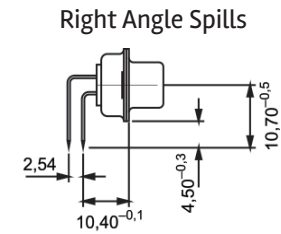
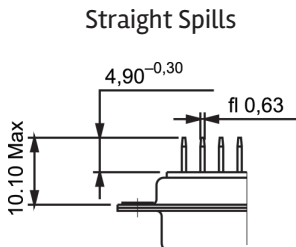
| D      | E                                 | 09                  | P              | 5  | 64               | C             | T                | X                      | LF                                |           |
|--------|-----------------------------------|---------------------|----------------|--|------------------|---------------|------------------|------------------------|-----------------------------------|-----------|
| SERIES | SHELL SIZE                        | LOCKING ACCESSORIES | TOTAL CONTACTS | CONTACTS TYPE                                  | TERMINATION TYPE | MATING CYCLES | TERMINATION TYPE | SHELL PLATING          | DIMPLES                           | LEAD-FREE |
| D      |                                   |                     | 09             |  |                  | ≥200          |                  |                        |                                   | LF        |
| E      |                                   |                     | 15             | Pin P  |                  | ≥500          |                  |                        |                                   |           |
| A      |                                   |                     | 25             | Socket S                                       |                  |               |                  |                        |                                   |           |
| B      |                                   |                     | 37             |  |                  |               |                  |                        |                                   |           |
| C      |                                   |                     | 50             |  |                  |               |                  |                        |                                   |           |
| D      |                                   |                     |                |  |                  |               |                  |                        |                                   |           |
| Blank  | Standard                          |                     |                | Straight 3                                     |                  |               |                  | Standard tin plating T |                                   |           |
| L      | Threaded Insert M3                |                     |                | Right Angle (Foot Print/Pitch: 10.40/2.54mm) 5 |                  |               |                  |                        | Standard on male connector only X |           |
| O      | Threaded Insert UNC 4-40          |                     |                |  |                  |               |                  |                        |                                   |           |
| V      | Female screw (Hexagonal) UNC 4-40 |                     |                |  |                  |               |                  |                        |                                   |           |

| Straight Spills                          | Angled Spills         | Index |
|--|-----------------------|-------|
| Without accessory                        | Two plastic brackets* | -     |
| -  | Without bracket       | C     |
| -  | Two metal brackets    | M     |
| Harpoons (Compulsory with option L or V) | Harpoons              | G     |

\*Except 50 pos with monobloc plastic brackets

## SPECIFIC DIMENSIONS



## ▶ D-Sub Standard Board Mount Connectors

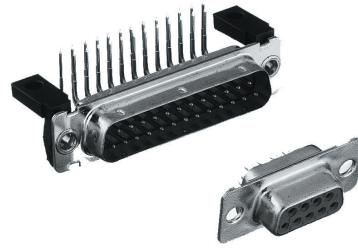
# MACHINED CONTACTS



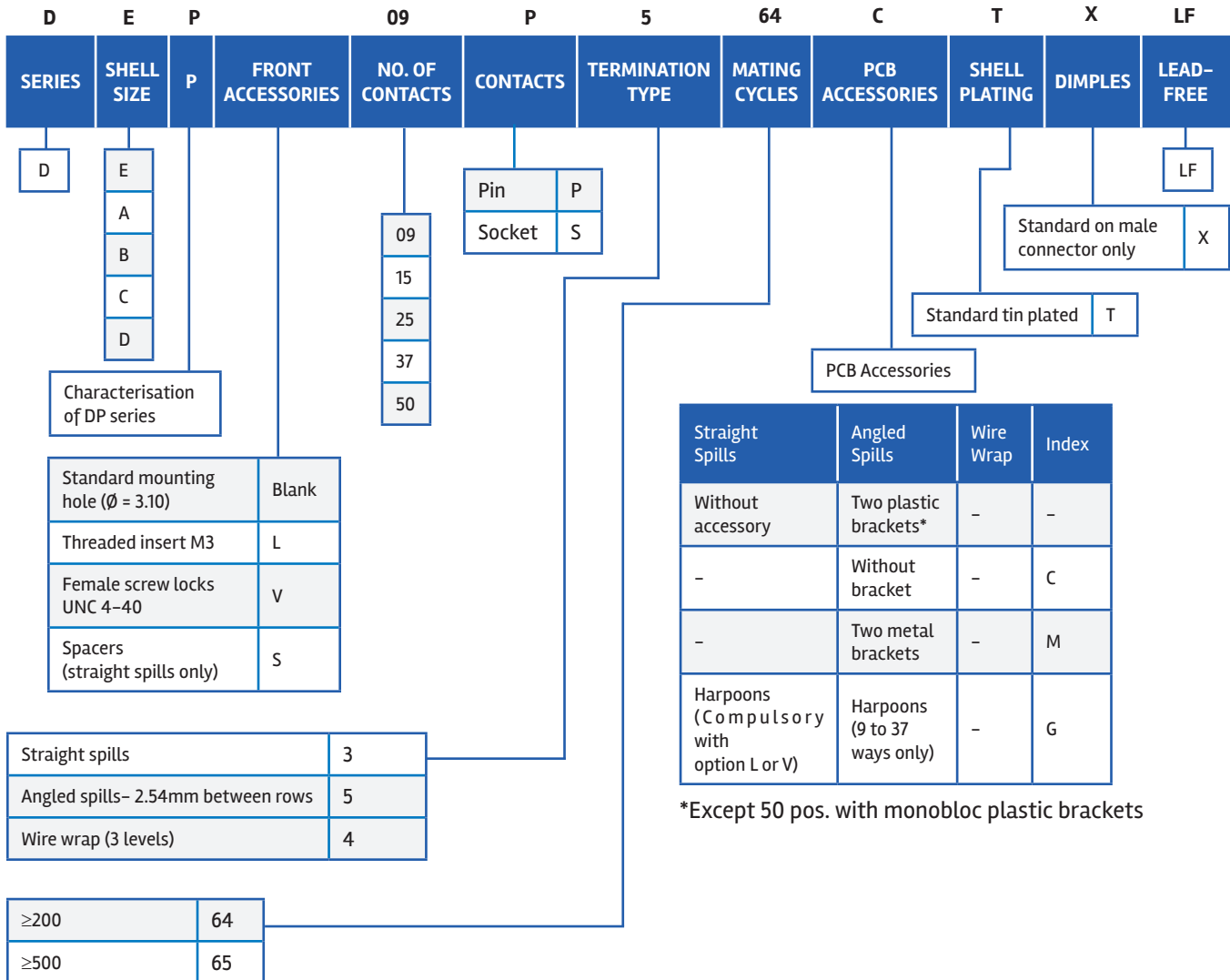
UL RECOGNISED FILE E 66906

- DP series is designed for high performance applications, particularly in the field of telecommunications: data transmission, private automatic branch switching, telecom (LNZ listed)

- It features machined contacts and is available with straight spills, angled spills, and wire wrap terminations



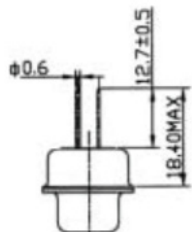
## PART NUMBER SELECTOR



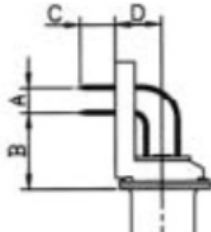
## ► D-Sub Standard Board Mount Connectors

### SPECIFIC DIMENSIONS

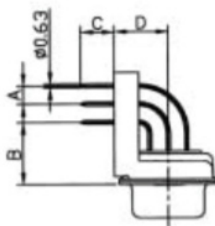
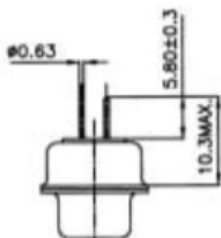
Wire Wrap



Right Angle Spills



Straight Spills



| Dimension    |                  | Termination Code |
|--------------|------------------|------------------|
|              |                  | 5                |
| A            |                  | 2.54             |
| $B \pm 0.1$  |                  | 10.30            |
| $C \pm 0.5$  |                  | 4.00             |
| $D \pm 0.19$ | 9 to 37 contacts | 7.20             |
|              | 50 contacts      | 8.60             |

## ▶ D-Sub Standard Board Mount Connectors

### TARGET MARKETS/APPLICATIONS



Asymmetric Digital Subscriber Line  
(ADSL)  
Base Station  
Switching  
Transmission



Set-top Box



Desktop and Laptop  
Storage System  
Router and Server



Automotive Diagnostics  
Control Drives  
Energy Meter  
Gaming Machine  
Test Equipment  
Office Automation  
POS & Handheld terminal  
Power Supplies  
Parking Meter  
Printer and Copier  
Renewable Energy  
Robotics  
Surveillance Camera  
Avionics



Medical Instrument



Military Equipment

ACPADSUBSTDBMT0324EA4

## Looking for pricing, stock, or lifecycle information?

Click below to explore more details on WIN SOURCE:

 [View D25S23A4GV00LF on WIN SOURCE](#)

 [Amphenol Information](#)

## Optimize Your Supply Chain with WIN SOURCE Solutions

-  Global Sourcing Solution
-  Obsolete Management
-  Cost Control Management
-  Shortage Management
-  Alternative Solution
-  Excess Inventory Management