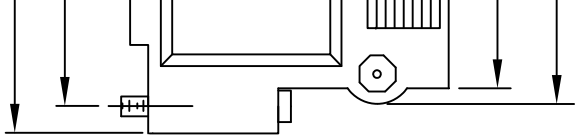
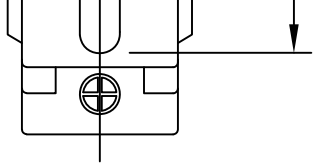




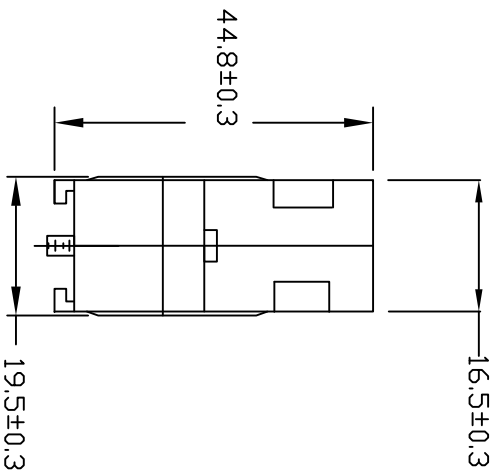
**THE DATASHEET OF**  
**976-037-010R031**





**BACKSHELL KIT INCLUDES:**  
 (2) BACKSHELL HALVES  
 (2) 4-40 MATING SCREWS  
 (2) HOUSING SCREWS  
 (2) HOUSING NUTS

| DIMENSIONS [MM] |        |        |        |        |        |
|-----------------|--------|--------|--------|--------|--------|
| SIZE            | A ±0.3 | B ±0.3 | C ±0.3 | D ±0.3 | E ±0.3 |
| 9               | 33.5   | 25.0   | 19.3   | 24.0   | 9.7    |
| 15              | 41.0   | 33.3   | 28.1   | 33.0   | 21.6   |
| 25              | 54.5   | 47.1   | 41.5   | 46.2   | 34.3   |
| 37              | 71.3   | 63.5   | 58.0   | 63.0   | 51.0   |



**METALIZED PLASTIC:**

**MATERIALS:** ABS HIGH TEMPERATURE  
 PLASTIC UL 94HB  
**PLATING:** CHROME - ELECTROPLATED

**PLASTIC:** ABS HIGH TEMPERATURE  
**MATERIALS:** PLASTIC UL 94HB - GREY

SERIES \_\_\_\_\_ 976-YYY-YYYRYY1  
 POSITIONS \_\_\_\_\_  
 009 \_\_\_\_\_  
 015 \_\_\_\_\_  
 025 \_\_\_\_\_  
 037 \_\_\_\_\_  
**MATERIAL** \_\_\_\_\_  
 010 = PLASTIC  
 020 = METALIZED PLASTIC  
**COLOR:** \_\_\_\_\_  
 03 = GREY  
 12 = NICKEL OVER COPPER  
 PUT-UPS \_\_\_\_\_  
 1 = KIT

IFICATIONS ARE  
 AND SHALL NOT  
 : USED AS THE  
 E OR SALE OF  
 EN PERMISSION.

**DRAWN:**  
 J. KADEL  
**DATE:**  
 09/05/2018

UNITS = [MM]

**DO NOT SCALE FROM DRAWING**

**NorComp**

SCALE: \_\_\_\_\_ SHEET \_\_\_\_\_ OF \_\_\_\_\_ REV  
 NTS 1 1 3  
 DWG NO. 976-YYY-0Y0RYY1

## Looking for pricing, stock, or lifecycle information?

Click below to explore more details on WIN SOURCE:

 [View 976-037-010R031 on WIN SOURCE](#)

 [NorComp Inc. Information](#)

## Optimize Your Supply Chain with WIN SOURCE Solutions

-  Global Sourcing Solution
-  Obsolete Management
-  Cost Control Management
-  Shortage Management
-  Alternative Solution
-  Excess Inventory Management