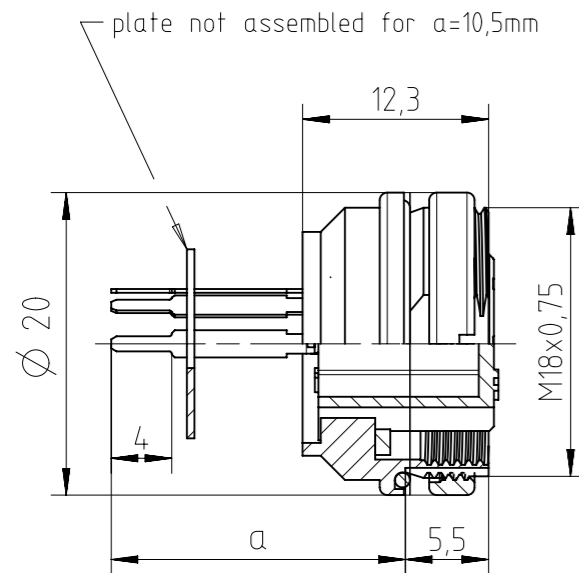


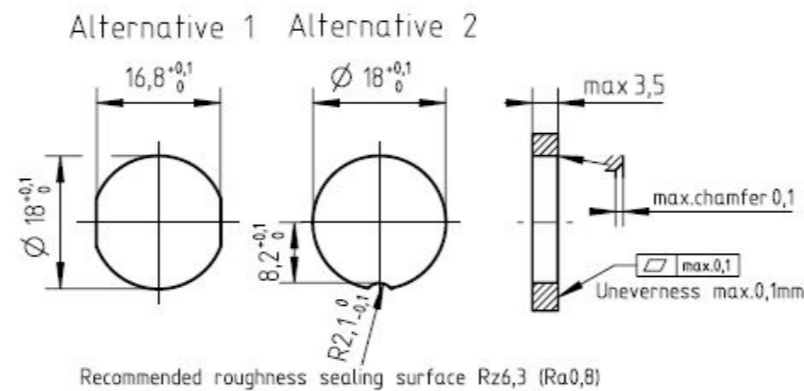


**THE DATASHEET OF
C091 61G005 110 2**





Panel Cutout M1:1



03

Number of contacts	Standard	3	4	5	5S	6	7	7	8	12	14	
Contact arrangement	DIN EN 61076-2-106	03-a	04-a	05-a	05-b	06-a	07-a	07-b	08-a	12-a	14-a	
Contact arrangement	IEC 60130-9 ¹⁾	yes	no	yes	no	yes	no	yes	no			
Rated voltage ²⁾	IEC 60664-1	300 V (100 V)	300 V (63 V)	100 V (32 V)	300 V (63 V)	100 V (32 V)	150 V (32 V)					
Rated voltage	UL 1977	250 V						60 V				
Rated impulse withstand voltage ²⁾	IEC 60664-1	1500 V (840 V)	1200 V (500 V)	1500 V (840 V)	1200 V (500 V)							
Pollution degree ²⁾	IEC 60664-1	1 (3 ³⁾)										
Installation category	IEC 60664-1	I										
Insulation group	IEC 60664-1	II, 400 ≤ CTI < 600										
Current rating	IEC 60512-5-2 UL 1977	10A/+40°C		7A/+40°C				3A/+40°C				
Insulation resistance	IEC 60512-3-1	>10 ¹⁰ Ohm ⁴⁾										
Contact resistance	IEC 60512-2-1	<5m Ohm										
Climatic category	IEC 60668-1	40 / 100 / 56										
Temperatur range	IEC 60668-1	-40°C...+100°C / -40°F...+212°F										
salt spray resistance	DIN IEC 60068-2-11	720h										
IP degree	IEC 60529	IP 69K / IP 67 / IP 65 (in mated condition)										
Insertion and withdrawal force	IEC 60512-13-2	25N	30N	35N	50N	55N	60N	50N				
Mechanical operation	IEC 60512-9-1	Silver ≥500 mating cycles / Gold ≥1000 mating cycles										
Housing material		brass and / or zinc die cast, nickel plated										
Dielectric material		thermoplastic										
Contacts		silver plated / gold plated										
Termination technique		solder										
wire gauge		≤ 0,5mm ² / 20 AWG								≤0,35mm ² /24AWG		
Flamability		UL 94 V0										
locking system	IEC 60130-9 DIN EN 61076-2-106	metal screw coupling; tightening torque 0,7 - 1,5 Nm										

¹⁾ Edition 2000-05
²⁾ values in brackets are according to DIN EN 61076-2-106
³⁾ designed acc. pollution degree 2; can be used under pollution degree 3 when the rules of IEC 60664-1 are fulfilled
⁴⁾ under operating conditions >10⁸ Ohm

Do not connect or disconnect under load. Metal housing parts shall be securely incorporated to protected ground.
 Remark for gold plated contacts:
 In order to avoid brittle inter-metallic connections, gold plated terminals have to be tin-plated in the solder area.
 All technical data have been measured in a laboratory environment and can be different during practical usage of the product. Any product information is for descriptive usage only and not legally binding; particularly the information does not constitute or provide any legal guaranties ("Beschaffensgarantie" or "Haltbarkeitsgarantie").

	14 (14-a)	Ag	C091 61G014 110 2 U	C091 61G014 120 2 U	C091 61G014 130 2 U
		Au	C091 61G014 210 2 U	C091 61G014 220 2 U	C091 61G014 230 2 U
	12 (12-a)	Ag	C091 61G012 110 2 U	C091 61G012 120 2 U	C091 61G012 130 2 U
		Au	C091 61G012 210 2 U	C091 61G012 220 2 U	C091 61G012 230 2 U
	8 (08-a)	Ag	C091 61G008 110 2 U	C091 61G008 120 2 U	C091 61G008 130 2 U
		Au	C091 61G008 210 2 U	C091 61G008 220 2 U	C091 61G008 230 2 U
	7 (07-b)	Ag	C091 61G107 110 2 U	C091 61G107 120 2 U	C091 61G107 130 2 U
		Au	C091 61G107 210 2 U	C091 61G107 220 2 U	C091 61G107 230 2 U
	7 (07-a)	Ag	C091 61G007 110 2 U	C091 61G007 120 2 U	C091 61G007 130 2 U
		Au	C091 61G007 210 2 U	C091 61G007 220 2 U	C091 61G007 230 2 U
	6 (06-a)	Ag	C091 61G006 110 2 U	C091 61G006 120 2 U	C091 61G006 130 2 U
		Au	C091 61G006 210 2 U	C091 61G006 220 2 U	C091 61G006 230 2 U
	5 (05-b)	Ag	C091 61G105 110 2 U	C091 61G105 120 2 U	C091 61G105 130 2 U
		Au	C091 61G105 210 2 U	C091 61G105 220 2 U	C091 61G105 230 2 U
	5 (05-a)	Ag	C091 61G005 110 2 U	C091 61G005 120 2 U	C091 61G005 130 2 U
		Au	C091 61G005 210 2 U	C091 61G005 220 2 U	C091 61G005 230 2 U
	4 (04-a)	Ag	C091 61G004 110 2 U	C091 61G004 120 2 U	C091 61G004 130 2 U
		Au	C091 61G004 210 2 U	C091 61G004 220 2 U	C091 61G004 230 2 U
	3 (03-a)	Ag	C091 61G003 110 2 U	C091 61G003 120 2 U	C091 61G003 130 2 U
		Au	C091 61G003 210 2 U	C091 61G003 220 2 U	C091 61G003 230 2 U
Contact arrangement View on mating side	Number of contacts (Contact arrangement acc. DIN EN 61076-2-106)			a = 10,5 mm	a = 14,5 mm
					a = 19,5 mm

Gewicht (errechnet) / Calc WT: 13,72 g

Zul. Abw./Tolerances: ISO 2768-mH

Prüfmaß / Testdimension

Teileindex / Partindexnumber:

Bagatelle change:

Maßstab / Scale: 2:1

A3

CUSTOMER DRAWING

Gerätedose Rückwandmontage
female receptacle rear mount.

Gez. 14.10.2015
Drawn MTOLKSDORF

Status Released

Gepr. 21.10.2020
Checked MGRIMM

Amphenol Tuchel Industrial GmbH

03 202000001 21.10.2020 MCARL

02 201500721 14.10.2015 MTOLK

Index Änderung/Description Datum/Date Name

Ers. f. l. Replacement for: M-C091 61GXXX X10 2 U Rev.01

Blatt/Sheet 1

1 Bl.

FAI2020-003965

NXM-V04

Weitergabe sowie Vervielfältigung dieser Unterlage, Verwertung und Mitteilung ihres Inhalts nicht gestattet, soweit nicht ausdrücklich zugestanden. Zuwiderhandlungen verpflichten zu Schadenersatz. Alle Rechte für den Fall der Patenterteilung oder Gebrauchsmuster-Eintragung vorbehalten.

Copying of this document and giving it to others and the use or communication of the contents thereof, are forbidden without express authority. Offenders are liable to the payment of damages. All rights are reserved in the event of the grant of a patent or the registration of the utility model or design.

Looking for pricing, stock, or lifecycle information?

Click below to explore more details on WIN SOURCE:

 [View C091 61G005 110 2 on WIN SOURCE](#)

 [Amphenol Information](#)

Optimize Your Supply Chain with WIN SOURCE Solutions

-  Global Sourcing Solution
-  Obsolete Management
-  Cost Control Management
-  Shortage Management
-  Alternative Solution
-  Excess Inventory Management