

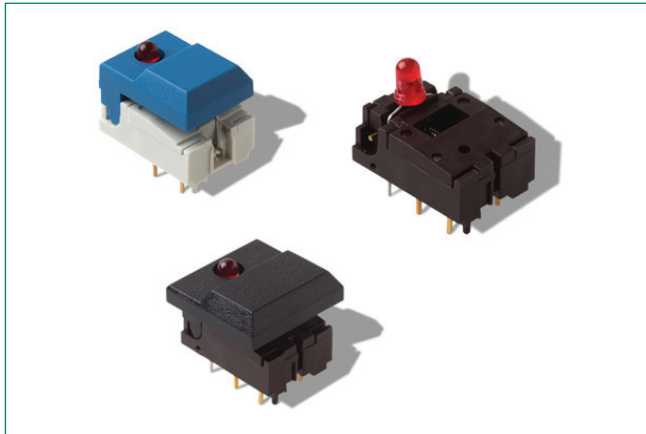


**THE DATASHEET OF  
SETL BK GN 7.62 AU EE**



# DIGITAST Series

## Microminiature SPDT, Keyswitches



### Specifications

<b>Function</b>	Momentary or push-push
<b>Contact Arrangement</b>	1 change over contact SPDT, NO
<b>Mode of Switching</b>	Non-shorting
<b>Distance Between Button Centers</b>	Horizontal Min.: 12.7 (0.500) or 17.78 (0.700) Vertical Min. 17.78 (0.700)
<b>Terminals</b>	PC pins
<b>Mounting</b>	Soldering, centering pins
<b>Total Travel</b>	≤ 3 (0.0018)
<b>Switching Travel</b>	1.5 (0.0591)
<b>Latching Travel</b>	1.8 (0.0709)
<b>Operating Force</b>	1.5 +/- 0.5 N (150 +/- 50 grams)
<b>Solderability</b>	Wave soldering, compatible with lead free soldering profile Hand soldering, 350°C for 3 seconds

### Description

With Digitast Micro-miniature SPDT keyswitches from C&K, designers gain a reliable, low-level switching solution for their audio and lighting consoles, instrumentation and industrial electronics applications that comes ready to implement on a PCB. Available in momentary or push-push formats, Digitast keyswitches can also be delivered in a variety of different button options or with an optional latching function.

### Features & Benefits

- High reliability/long life
- Designed for low level switching
- Ready to implement on PCB
- Latching function available
- Several button options
- RoHS compliant and compatible

### Applications

- Medical
- Instrumentation
- Industrial electronics
- Audio electronics

### Electrical Characteristics

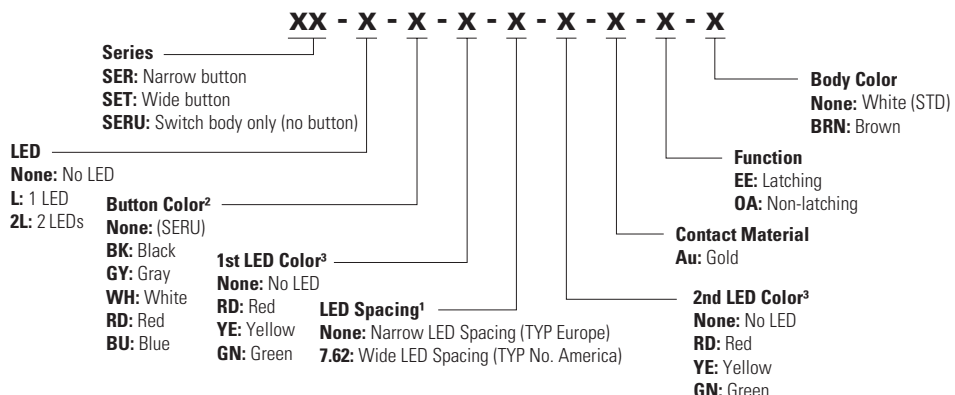
<b>Switching Power Max.</b>	240 mW DC
<b>Switching Voltage Max.</b>	24 V DC
<b>Switching Current Max.</b>	10 mA DC
<b>Carrying Current at 20°C (push-push version)</b>	100 mA
<b>Dielectric Strength (50 Hz, 1 min)</b>	500 V
<b>Operating Life with or Without Max. Switching Power</b>	Momentary: ≥ 5 × 10 <sup>6</sup> operations Push-push: ≥ 5 × 10 <sup>5</sup> operations
<b>Contact Resistance</b>	Initial ≤ 50 mΩ After 5 × 10 <sup>6</sup> operations: ≤ 100 mΩ
<b>Insulation Resistance</b>	≥ 10 <sup>10</sup> Ω
<b>Capacitance</b>	At f = 10 kHz: ≤ 0.8 pF
<b>Bounce Time</b>	≤ 2.5 ms Operating speed 400 mm/s (15.75/s)
<b>Operating Temperature</b>	-25°C to 85°C

### Ordering Number

Our easy build-a-switch concept allows you to mix and match options to create the switch you need. To order, select desired option from each category and place it in the appropriate box.

#### Switch

Reference  
SER BK AU OA



#### Notes:

1. Some of the configurations may not be available or could require some development.

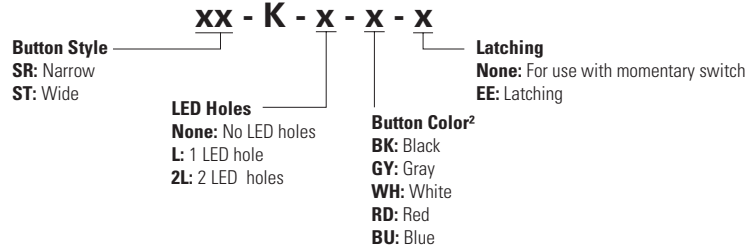
# DIGITAST Series

## Microminiature SPDT, Keyswitches



### Button

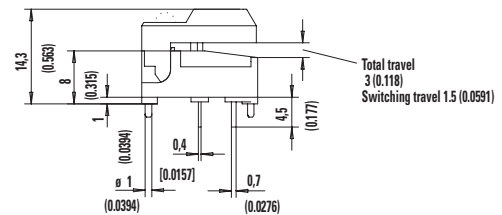
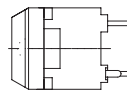
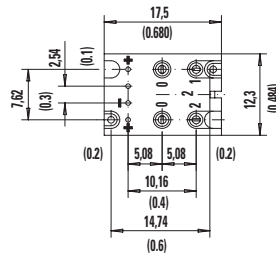
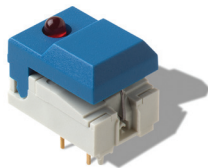
Reference  
SRK BK



1. LED spacing only applies when 1 LED requested
2. Additional button colors available by request
3. Additional LED colors available by request including Bi color configurations

### Designation

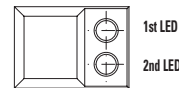
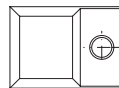
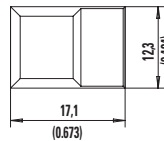
#### SER Narrow Button



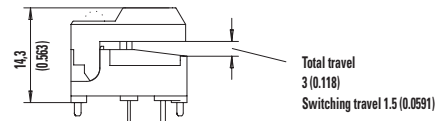
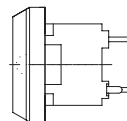
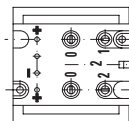
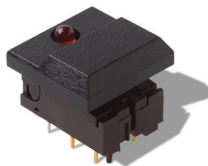
SER

SERL

SER2L



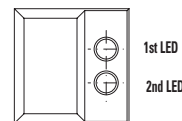
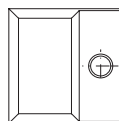
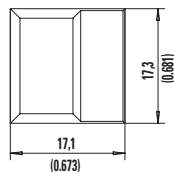
#### SET Wide Button



SET

SETL

SET2L

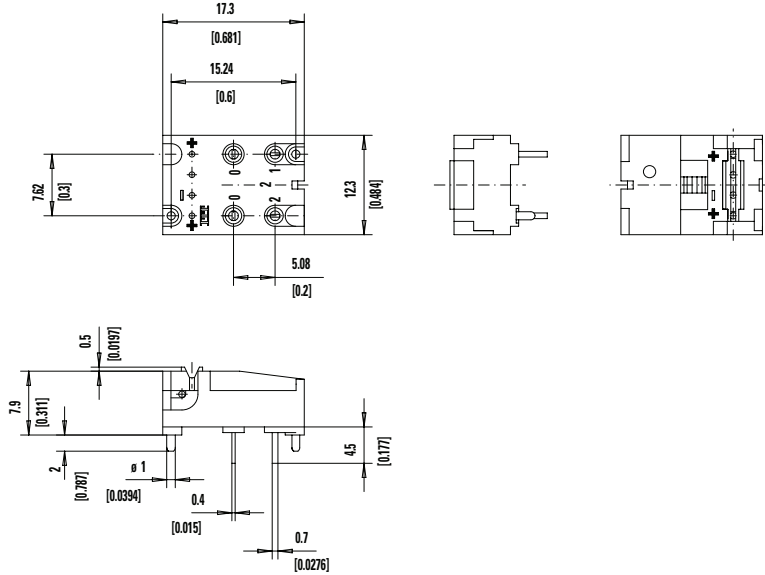


# DIGITAST Series

## Microminiature SPDT, Keyswitches

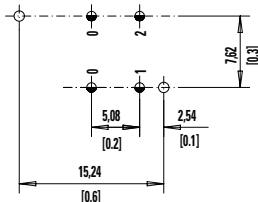


### SERU No Button

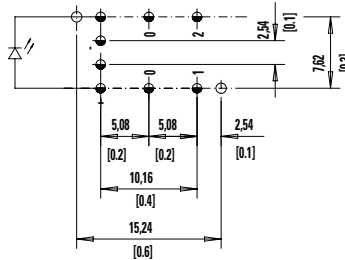


### LED

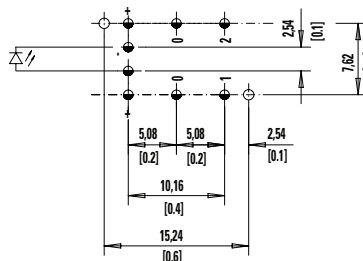
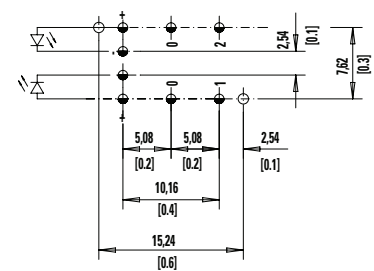
#### None No LED



#### L 1 LEDs



#### 2L 2 LEDs



⌀ 1.0±0.1 (0.0394±0.00349)

⌀ 1.1±0.05 (0.0433±0.00197)

### Button Color

**BK Black**

**GY Gray**

Other button colors available by request [red (RD), green (GN), white (WH), yellow (YE), blue (BU), orange (OG)].

# DIGITAST Series

## Microminiature SPDT, Keyswitches



### LED Color

Option Code	Color
None	Models without LED
RD	Red
GN	Green
YE	Yellow

### Contact Material

Option Code	Material
Au	Gold

### Function

Option Code	Color	Schematic
OA	Momentary	
EE	Push-Push	

## Looking for pricing, stock, or lifecycle information?

Click below to explore more details on WIN SOURCE:

- ⊖ [View SETL BK GN 7.62 AU EE on WIN SOURCE](#)
- ⊖ [C&K Components Information](#)

## Optimize Your Supply Chain with WIN SOURCE Solutions

- ✓ Global Sourcing Solution
- ✓ Obsolete Management
- ✓ Cost Control Management
- ✓ Shortage Management
- ✓ Alternative Solution
- ✓ Excess Inventory Management