

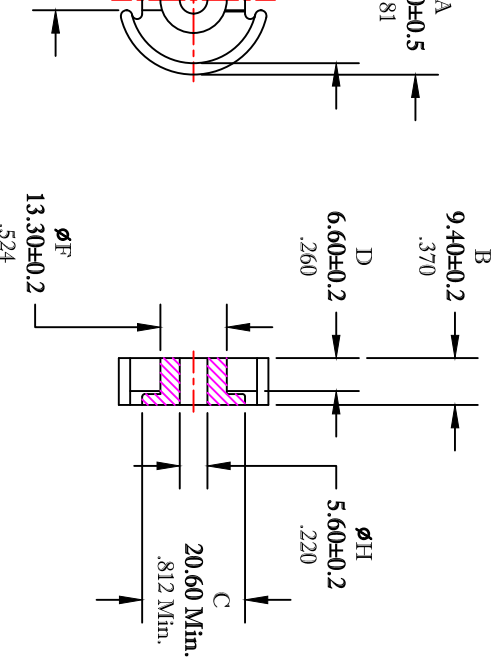


THE DATASHEET OF
5678302021



UNCONTROLLED ~ CATALOG ~ DRAWING

SIZE	PART NO.	REV.
B	5678302021	~



DIMENSIONS
NUMBERS ARE IN MILLIMETERS
LIGHT NUMBERS ARE IN INCHES

ELECTRICAL SPECIFICATIONS					
$\Sigma L/A(\text{cm}^{-1})$	l_e (cm)	A_e (cm ²)	V_e (cm ³)	A_{MIN} (cm ²)	A_L (mH) @1kHz <10gauss
3.56	4.53	1.27	5.75	1.14	5700±25%

MATE PAIR: CLAMPING FORCE = 22 lbs.

POWER LOSS @ 100°C
f = 100kHz, 2000g P.L. < 3.2 Watts

TITLE 30mm X 19mm POT CORE					
DRAWN BY JSERENSGIC	DATE 07-16-2018	SIZE B	PART NO. 5678302021	REV. ~	
CHKD BY		SCALE NONE	SHEET 1	of 1	
APPRVD BY					

FR# 78

Looking for pricing, stock, or lifecycle information?

Click below to explore more details on WIN SOURCE:

 [View 5678302021 on WIN SOURCE](#)

 [FAIR-RITE PRODUCTS](#) Information

Optimize Your Supply Chain with WIN SOURCE Solutions

-  Global Sourcing Solution
-  Obsolete Management
-  Cost Control Management
-  Shortage Management
-  Alternative Solution
-  Excess Inventory Management