

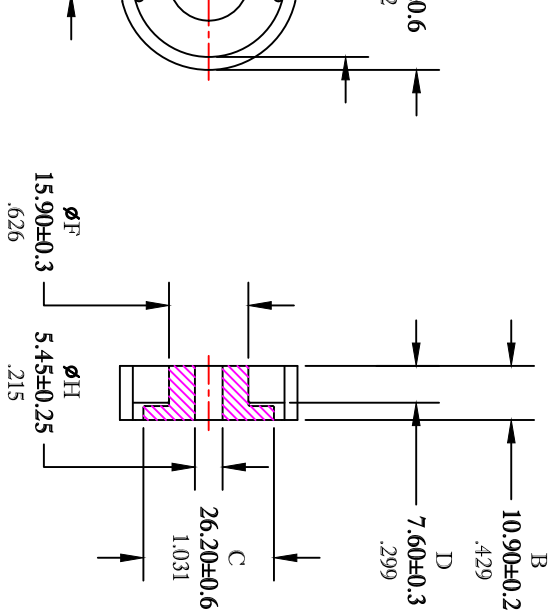


**THE DATASHEET OF**  
**5678362321**



UNCONTROLLED ~ CATALOG ~ DRAWING

SIZE	PART NO.	REV.
B	5678362321	~



**ELECTRICAL SPECIFICATIONS**

$\Sigma l / A(\text{cm}^{-1})$	$l_e$ (cm)	$A_e$ (cm <sup>2</sup> )	$V_e$ (cm <sup>3</sup> )	$A_{MIN}$ (cm <sup>2</sup> )	$A_L$ (nH) @1kHz <10gauss
2.9	5.53	1.84	9.78	1.64	8300 ± 25%

MATE PAIR: CLAMPING FORCE = 32 lbs.

POWER LOSS @ 100°C  
 $f=100\text{kHz}$ , 2000g P.L. < 5.4 Watts

DIMENSIONS  
 NUMBERS ARE IN MILLIMETERS  
 SHHT NUMBERS ARE IN INCHES

**FAIR-RITE PRODUCTS CORP.**

TITLE: 36mm POT CORE

DRAWN BY LSRENCISCS	DATE 07-16-2018	SIZE B	PART NO. 5678362321	REV. ~
CHKD BY		SCALE NONE	SHEET 1	of 1
APPRVD BY				

FR# 78

## Looking for pricing, stock, or lifecycle information?

Click below to explore more details on WIN SOURCE:

 [View 5678362321 on WIN SOURCE](#)

 [FAIR-RITE PRODUCTS](#) Information

## Optimize Your Supply Chain with WIN SOURCE Solutions

-  Global Sourcing Solution
-  Obsolete Management
-  Cost Control Management
-  Shortage Management
-  Alternative Solution
-  Excess Inventory Management