



THE DATASHEET OF
164A16079X



D-SUB STANDARD – DUAL PORT

Solder pin – Angled – Precision machined contacts – .750" / 19.05 mm Connector spacing



RoHS compliant – CSA listed, File No.: LR 115000-1 – UL listed, File No.: E202784

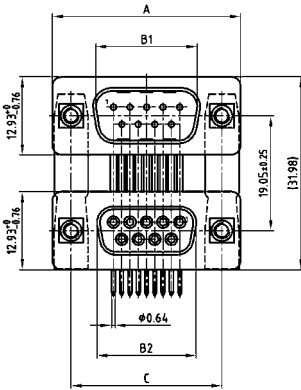
DESCRIPTION

- Variations: pin – pin; socket – socket; pin – socket
- Mounting styles:
 - with mounting bracket and 4-40 UNC or M3 threaded insert
 - with mounting bracket and 4-40 UNC or M3 front spacer
 - with mounting bracket, PCB clip and 4-40 UNC or M3 threaded insert
 - with mounting bracket, PCB clip and 4-40 UNC or M3 front spacer
- Quality class 3 (also available in quality class 1)
- Shell: Steel tin plated (brass tin plated or stainless steel available on request)

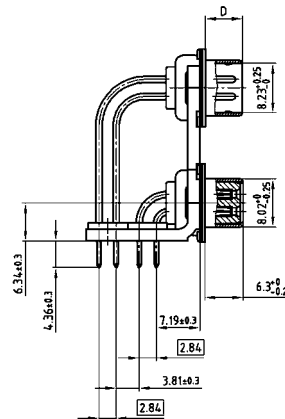
PRODUCT DRAWING

No. of pos.	A -0.76	B1 +0.25	B2 -0.25	C	D -0.30
2X 09	31.19	16.79	16.46	25.00 +0.12	6.12
2X 15	39.52	25.12	24.79	33.30 +0.15 +0.10	6.12
2X 25	53.42	38.84	38.50	47.04 +0.13	5.99
2X 37	69.70	55.30	54.96	63.50 +0.13	5.99

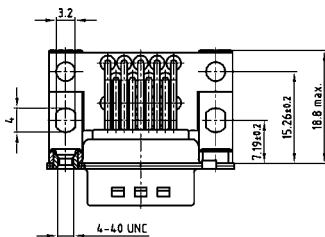
Graphically representation of only one variant!



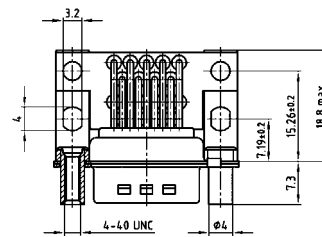
Mounting style: Threaded insert



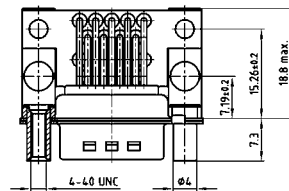
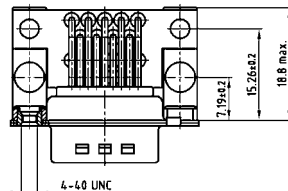
Mounting style: Front spacer



Mounting style: PCB clip, threaded insert



Mounting style: PCB clip, front spacer

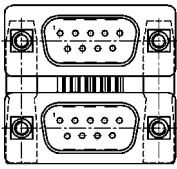


D-SUB STANDARD – DUAL PORT VARIATIONS

Solder pin – Angled – Precision machined contacts – .750" / 19.05 mm Connector spacing

ORDER DATA

PCB layout: Kat1IU5A

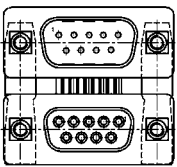


Variation:
plug upper –
plug bottom

No. of pos.	Mounting style 4-40 UNC	Part Number
09 / 09	Threaded insert	163 A 15519 X
15 / 15	Threaded insert	163 A 15529 X
25 / 25	Threaded insert	163 A 15539 X
37 / 37	Threaded insert	163 A 15549 X
09 / 09	Front spacer	163 A 15679 X
15 / 15	Front spacer	163 A 15689 X
25 / 25	Front spacer	163 A 15699 X
37 / 37	Front spacer	163 A 15709 X
09 / 09	PCB clip / Threaded insert	163 A 19489 X
15 / 15	PCB clip / Threaded insert	163 A 19499 X
25 / 25	PCB clip / Threaded insert	163 A 19509 X
37 / 37	PCB clip / Threaded insert	163 A 19519 X
09 / 09	PCB clip / Front spacer	163 A 19649 X
15 / 15	PCB clip / Front spacer	163 A 19659 X
25 / 25	PCB clip / Front spacer	163 A 19669 X
37 / 37	PCB clip / Front spacer	163 A 19679 X

No. of pos.	Mounting style M3	Part Number
09 / 09	Threaded insert	163 A 15599 X
15 / 15	Threaded insert	163 A 15609 X
25 / 25	Threaded insert	163 A 15619 X
37 / 37	Threaded insert	163 A 15629 X
09 / 09	Front spacer	163 A 15759 X
15 / 15	Front spacer	163 A 15769 X
25 / 25	Front spacer	163 A 15779 X
37 / 37	Front spacer	163 A 15789 X
09 / 09	PCB clip / Threaded insert	163 A 19569 X
15 / 15	PCB clip / Threaded insert	163 A 19579 X
25 / 25	PCB clip / Threaded insert	163 A 19589 X
37 / 37	PCB clip / Threaded insert	163 A 19599 X
09 / 09	PCB clip / Front spacer	163 A 19729 X
15 / 15	PCB clip / Front spacer	163 A 19739 X
25 / 25	PCB clip / Front spacer	163 A 19749 X
37 / 37	PCB clip / Front spacer	163 A 19759 X

PCB layout: Kat1IU6A

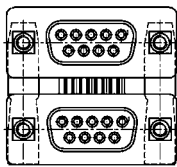


Variation:
plug upper –
socket bottom

No. of pos.	Mounting style 4-40 UNC	Part Number
09 / 09	Threaded insert	163 A 15559 X
15 / 15	Threaded insert	163 A 15569 X
25 / 25	Threaded insert	163 A 15579 X
37 / 37	Threaded insert	163 A 15589 X
09 / 09	Front spacer	163 A 15719 X
15 / 15	Front spacer	163 A 15729 X
25 / 25	Front spacer	163 A 15739 X
37 / 37	Front spacer	163 A 15749 X
09 / 09	PCB clip / Threaded insert	163 A 19529 X
15 / 15	PCB clip / Threaded insert	163 A 19539 X
25 / 25	PCB clip / Threaded insert	163 A 19549 X
37 / 37	PCB clip / Threaded insert	163 A 19559 X
09 / 09	PCB clip / Front spacer	163 A 19689 X
15 / 15	PCB clip / Front spacer	163 A 19699 X
25 / 25	PCB clip / Front spacer	163 A 19709 X
37 / 37	PCB clip / Front spacer	163 A 19719 X

No. of pos.	Mounting style M3	Part Number
09 / 09	Threaded insert	163 A 15639 X
15 / 15	Threaded insert	163 A 15649 X
25 / 25	Threaded insert	163 A 15659 X
37 / 37	Threaded insert	163 A 15669 X
09 / 09	Front spacer	163 A 15799 X
15 / 15	Front spacer	163 A 15809 X
25 / 25	Front spacer	163 A 15819 X
37 / 37	Front spacer	163 A 15829 X
09 / 09	PCB clip / Threaded insert	163 A 19609 X
15 / 15	PCB clip / Threaded insert	163 A 19619 X
25 / 25	PCB clip / Threaded insert	163 A 19629 X
37 / 37	PCB clip / Threaded insert	163 A 19639 X
09 / 09	PCB clip / Front spacer	163 A 19769 X
15 / 15	PCB clip / Front spacer	163 A 19779 X
25 / 25	PCB clip / Front spacer	163 A 19789 X
37 / 37	PCB clip / Front spacer	163 A 19799 X

PCB layout: Kat1IU6A

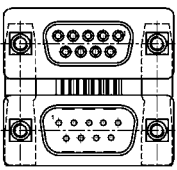


Variation:
socket upper –
socket bottom

No. of pos.	Mounting style 4-40 UNC	Part Number
09 / 09	Threaded insert	164 A 15929 X
15 / 15	Threaded insert	164 A 15939 X
25 / 25	Threaded insert	164 A 15949 X
37 / 37	Threaded insert	164 A 15959 X
09 / 09	Front spacer	164 A 16089 X
15 / 15	Front spacer	164 A 16099 X
25 / 25	Front spacer	164 A 16109 X
37 / 37	Front spacer	164 A 16119 X
09 / 09	PCB clip / Threaded insert	164 A 19919 X
15 / 15	PCB clip / Threaded insert	164 A 19929 X
25 / 25	PCB clip / Threaded insert	164 A 19939 X
37 / 37	PCB clip / Threaded insert	164 A 19949 X
09 / 09	PCB clip / Front spacer	164 A 20079 X
15 / 15	PCB clip / Front spacer	164 A 20089 X
25 / 25	PCB clip / Front spacer	164 A 20099 X
37 / 37	PCB clip / Front spacer	164 A 20109 X

No. of pos.	Mounting style M3	Part Number
09 / 09	Threaded insert	164 A 16009 X
15 / 15	Threaded insert	164 A 16019 X
25 / 25	Threaded insert	164 A 16029 X
37 / 37	Threaded insert	164 A 16039 X
09 / 09	Front spacer	164 A 16169 X
15 / 15	Front spacer	164 A 16179 X
25 / 25	Front spacer	164 A 16189 X
37 / 37	Front spacer	164 A 16199 X
09 / 09	PCB clip / Threaded insert	164 A 19999 X
15 / 15	PCB clip / Threaded insert	164 A 20009 X
25 / 25	PCB clip / Threaded insert	164 A 20019 X
37 / 37	PCB clip / Threaded insert	164 A 20029 X
09 / 09	PCB clip / Front spacer	164 A 20159 X
15 / 15	PCB clip / Front spacer	164 A 20169 X
25 / 25	PCB clip / Front spacer	164 A 20179 X
37 / 37	PCB clip / Front spacer	164 A 20189 X

PCB layout: Kat1IU5A



Variation:
socket upper –
plug bottom

No. of pos.	Mounting style 4-40 UNC	Part Number
09 / 09	Threaded insert	164 A 15969 X
15 / 15	Threaded insert	164 A 15979 X
25 / 25	Threaded insert	164 A 15989 X
37 / 37	Threaded insert	164 A 15999 X
09 / 09	Front spacer	164 A 16129 X
15 / 15	Front spacer	164 A 16139 X
25 / 25	Front spacer	164 A 16149 X
37 / 37	Front spacer	164 A 16159 X
09 / 09	PCB clip / Threaded insert	164 A 19959 X
15 / 15	PCB clip / Threaded insert	164 A 19969 X
25 / 25	PCB clip / Threaded insert	164 A 19979 X
37 / 37	PCB clip / Threaded insert	164 A 19989 X
09 / 09	PCB clip / Front spacer	164 A 20119 X
15 / 15	PCB clip / Front spacer	164 A 20129 X
25 / 25	PCB clip / Front spacer	164 A 20139 X
37 / 37	PCB clip / Front spacer	164 A 20149 X

No. of pos.	Mounting style M3	Part Number
09 / 09	Threaded insert	164 A 16049 X
15 / 15	Threaded insert	164 A 16059 X
25 / 25	Threaded insert	164 A 16069 X
37 / 37	Threaded insert	164 A 16079 X
09 / 09	Front spacer	164 A 16209 X
15 / 15	Front spacer	164 A 16219 X
25 / 25	Front spacer	164 A 16229 X
37 / 37	Front spacer	164 A 16239 X
09 / 09	PCB clip / Threaded insert	164 A 20039 X
15 / 15	PCB clip / Threaded insert	164 A 20049 X
25 / 25	PCB clip / Threaded insert	164 A 20059 X
37 / 37	PCB clip / Threaded insert	164 A 20069 X
09 / 09	PCB clip / Front spacer	164 A 20199 X
15 / 15	PCB clip / Front spacer	164 A 20209 X
25 / 25	PCB clip / Front spacer	164 A 20219 X
37 / 37	PCB clip / Front spacer	164 A 20229 X

PCB clip .122"/3.1 ± .004"/0.10 mm hole diameter and .063"/1.6 mm circuit board thickness

Looking for pricing, stock, or lifecycle information?

Click below to explore more details on WIN SOURCE:

 [View 164A16079X on WIN SOURCE](#)

 [Manufacturer Information](#)

Optimize Your Supply Chain with WIN SOURCE Solutions

-  Global Sourcing Solution
-  Obsolete Management
-  Cost Control Management
-  Shortage Management
-  Alternative Solution
-  Excess Inventory Management