



**THE DATASHEET OF  
06GEEG3E**



## INTRODUCTIONS

1. A high performance general purpose filter with an IEC connector providing effective EMI suppression.
2. Bleeder resistor can be added with suffix "-R" on part numbers, except "G3H", "G3V", "W3V", "G3J", "W3J", types.
3. All part numbers are UL recognized, CAS certified and VDE approved.
4. With optional Y-Cap from 100pF to 3300pF.

## COMPONENTS

PART NO.	Cx (uF)	L (mH)	Cy (pF)	R (Ω)	
01GEEG3E/W3E/-R	0.1	6.5	2200	1M	
01GEEG3H/G3V/W3V		3	3300	-	
01GEEG3S/-R		10.5			
03GEEG3E/W3E/W3ES/-R		2.5	2200	1M	1M
03GEEG3U/-R					
•03GEEW3ES/-R		3300	-	-	-
03GEEG3H/G3V/W3V					
03GEEG3S/-R		4	-	-	1M
•03GEEG3Q/W3Q-R					
03GEEW3J		2.4	2200	-	-
03GEHG3J					
06GEEG3E/W3E/W3ES/-R		0.8	-	1M	1M
06GEEG3U/-R					
06GEEG3H/G3V/W3V		3300	-	-	-
06GEEG3S/-R					
••06GEEG3Q/W3Q-R		1.05	2200	1M	1M
•••10GEEG3C/W3C/-R		1.5			
10GEEG3E/W3E/W3ES/-R		0.4	2200	1M	1M
10GEEG3S/-R		0.2			
*10GEEG3Q/W3Q-R		0.3	2200	1M	1M
10GEEG3U/-R	0.2				
**15GEEG3E/W3E/-R	0.2	2200	1M	1M	
***20GEEG3E/W3E/-R	0.3				

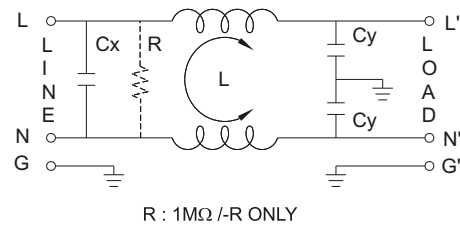
• UL, CSA approved to 4A 115/250V  
 •• UL, CSA approved to 8A 115/250V  
 ••• VDE approved to 8A/250V

\* UL, CSA approved to 13A 115/250V  
 \*\* VDE approved to 10A/250V  
 \*\*\* VDE approved to 16A/250V

## SPECIFICATIONS

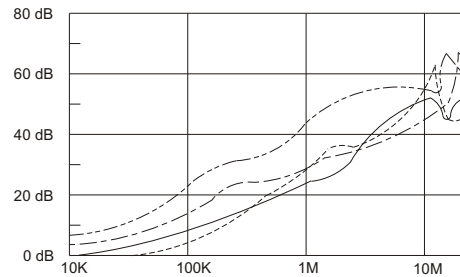
1. Maximum leakage current each line-to-ground @ 115VAC 60Hz: 0.25mA @ 250VAC 50Hz: 0.45mA
2. Hipot rating (one minute) line-to-ground: 2250VDC line-to-line: 1450VDC
3. Operating frequency: 50/60Hz
4. Rated voltage: 115/250VAC

## ELECTRICAL SCHEMATIC

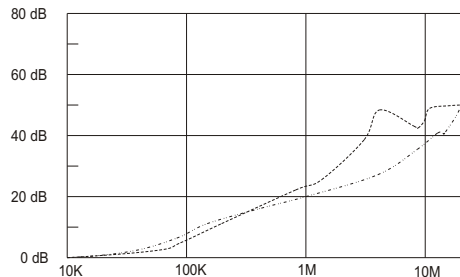


## INSERTION LOSS (TYPICAL)

03GEEG3E ----- COMMON MODE ----- DIFF. MODE  
 06GEEG3E ----- COMMON MODE ----- DIFF. MODE

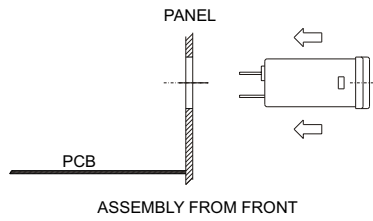


20GEEG3E ----- COMMON MODE ----- DIFF. MODE



## MINIMUM INSERTION LOSS IN dB

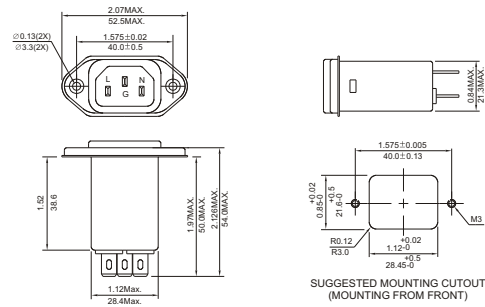
CURRENT RATING	COMMON MODE (L-G) IN 50 OHM SYSTEM					
	FREQUENCY-MHz					
	.15	.50	1.0	5.0	10	30
1A(E)(S)	28	35	38	38	40	40
1A(H)	26	36	44	54	55	55
1A(G3V)	24	35	42	50	55	55
1A(W3V)	24	35	42	50	55	55
3A(E)(S)(Q)	20	25	30	38	40	40
3A(H)	24	30	38	50	55	40
3A(G3J,W3J)	20	25	30	38	40	40
3A(G3V)(W3V)	20	29	36	48	46	50
6A(E)(S)	12	18	24	35	40	40
6A(H)	15	25	28	35	45	45
6A(Q)	15	20	24	35	40	55
6A(G3V)(W3V)	14	23	30	42	45	50
10A(E)(S)	4	10	13	28	35	40
10A(C)	10	15	15	25	30	35
10A(Q)	10	12	15	30	32	45
15A(E)	4	10	13	28	35	40
20A	8	10	15	25	30	35



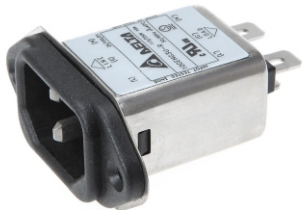
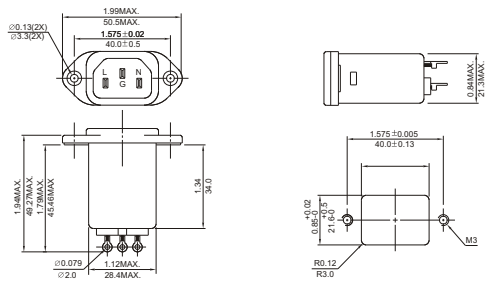
**MECHANICAL CONSTRUCTION**



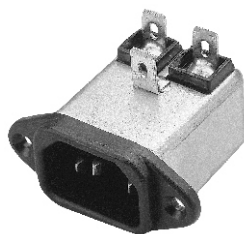
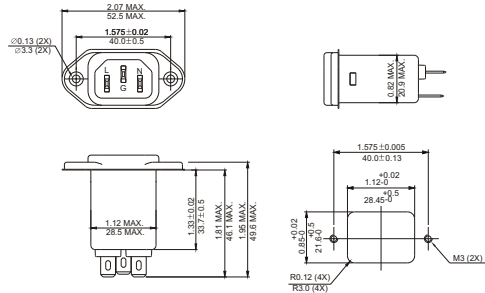
EG3E, EG3Q (Optional soldering lug or wire type)



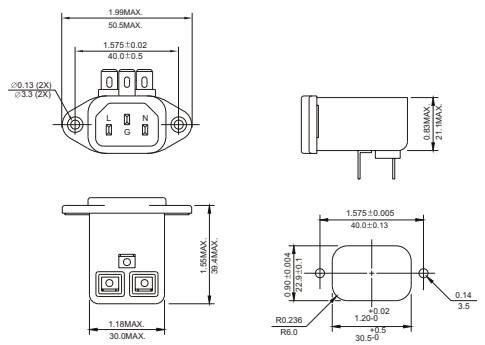
EG3S



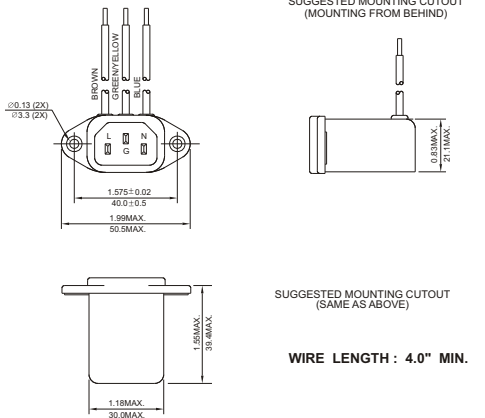
EG3U (With Compact Size)



EG3V

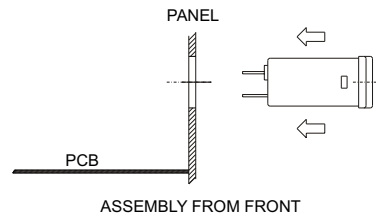


EW3V



UNIT: INCH  
mm

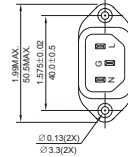
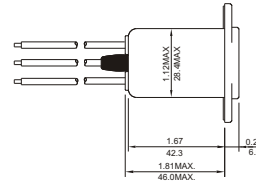
WIRE LENGTH : 4.0" MIN.



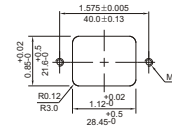
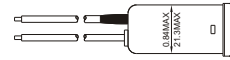
**MECHANICAL CONSTRUCTION**



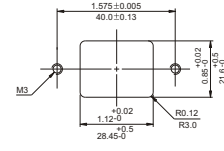
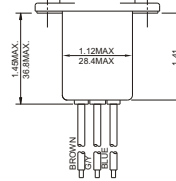
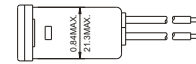
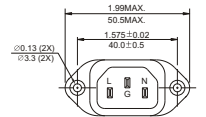
EW3J



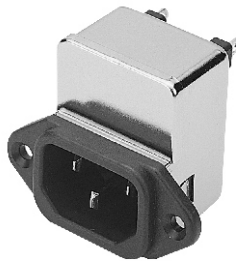
SUGGESTED MOUNTING CUTOUT (MOUNTING FROM FRONT)



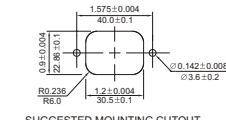
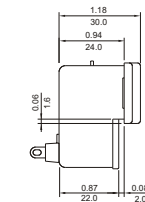
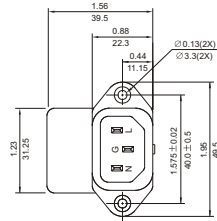
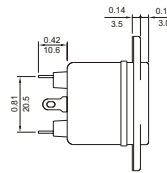
EW3ES



SUGGESTED MOUNTING CUTOUT



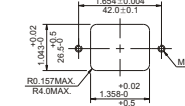
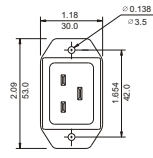
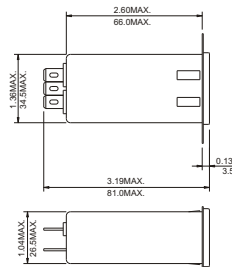
HG3J



SUGGESTED MOUNTING CUTOUT (MOUNTING FROM BEHIND)



20GEEG3E (Optional wire type)



SUGGESTED MOUNTING CUTOUT (MOUNTING FROM REVERSE)

WIRE LENGTH : 4.0" MIN.

UNIT: INCH/mm

## Looking for pricing, stock, or lifecycle information?

Click below to explore more details on WIN SOURCE:

 [View 06GEEG3E on WIN SOURCE](#)

 [Delta Electronics](#) Information

## Optimize Your Supply Chain with WIN SOURCE Solutions

-  Global Sourcing Solution
-  Obsolete Management
-  Cost Control Management
-  Shortage Management
-  Alternative Solution
-  Excess Inventory Management