



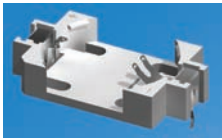
THE DATASHEET OF
1058TR



THRU-HOLE (THM) & SURFACE MOUNT (SMT) VIBRA-FIT HOLDERS

- Extremely rugged, holds battery securely under shock and vibration applications.
- Polarized holder protects circuit from improper battery insertion.
- Polarity clearly marked
- Safe for all soldering and reflow operations
- Designed for manual insertion of battery
- Glass Filled LCP base material UL Rated 94V-0 impervious to most industrial solvents.
- Operating Temperature Range: -60°F to 293°F (-50°C to 146°C)

2025 / 2032 THRU HOLE MOUNT HOLDER



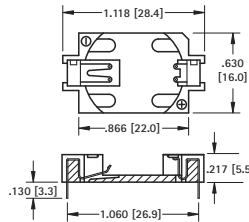
Thru Hole Mount

MATERIAL:

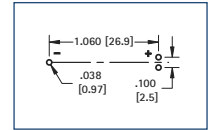
Contacts: .006 (.15) Phosphor Bronze, Tin Plate
Base: Glass Filled LCP, UL Rated 94V-0

CAT. NO.	BATTERY REFERENCE
1059	CR2025, DL2032

- Tin plated contacts compatible with wave solder and manual soldering process



Mounting Detail



2025 / 2032 SURFACE MOUNT HOLDER



Surface Mount

MATERIAL:

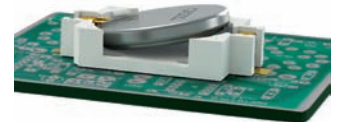
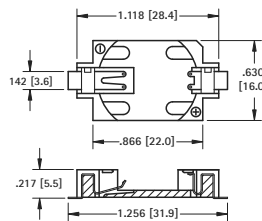
Contacts: .006 (.15) Phosphor Bronze, Gold Plate (Flash)
Base: Glass Filled LCP, UL Rated 94V-0

CAT. NO. BULK	ON TAPE & REEL	BATTERY REFERENCE
1060	1060TR	CR2025, DL2032

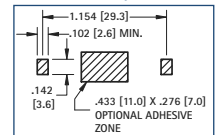
Tape & Reel Spec's: 44mm wide; 20mm pitch; 13 inch reel (500 pieces per reel)

AVAILABLE ON TAPE AND REEL

- Compatible with vacuum and mechanical pick & place assembly systems
- All conductive polystyrene carrier tape meets ANSI/EIA-481 standards
- Viewable solder tails allows for easy solder joint inspection



Pad Layout



SURFACE MOUNT (SMT) AUTO-IN HOLDERS

- Designed for applications where the battery will be automatically inserted via a vacuum or mechanical pick-and-place device
- All conductive polystyrene carrier tape meets ANSI/EIA-481 standards
- Viewable solder tails allows for easy solder joint inspection
- Gold plated contacts assure low contact resistance
- Ideal for retaining cells securely under shock and vibration
- Compatible with most vacuum and mechanical pick-and-place assembly systems

2032 LOW PROFILE HOLDER



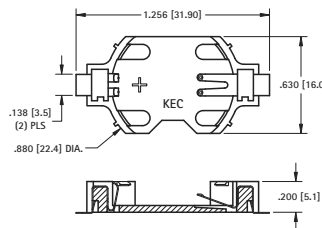
Surface Mount

MATERIAL:

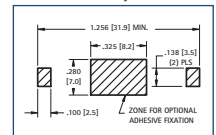
Contacts: .006 (.15) Phosphor Bronze, Gold Plate (Flash)
Base: Glass Filled LCP, UL Rated 94V-0

CAT. NO. BULK	ON TAPE & REEL	BATTERY REFERENCE
1058	1058TR	CR2032

AVAILABLE ON TAPE AND REEL



Pad Layout



2032 ULTRA LOW PROFILE HOLDER



MATERIAL:

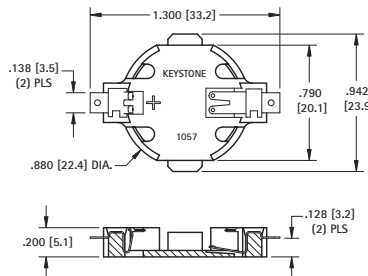
Contacts: .009 (.23) Phosphor Bronze, Gold Plate (Flash)
Base: Glass filled LCP, UL Rated 94V-0

CAT. NO. BULK	ON TAPE & REEL	BATTERY REFERENCE
1057	1057TR	CR2032

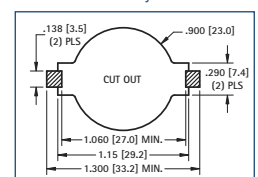
Tape & Reel Spec's: 56mm wide; 32mm pitch; 13 inch reel (400 pieces per reel)

AVAILABLE ON TAPE AND REEL

- Ideal when circuit board height is a critical design parameter
- Rises only 2mm above the PCB surface by mounting the holder thru a hole in the PCB, allowing the holder to sit through the PCB
- Built-in stabilization tabs add mounting security



Pad Layout



Looking for pricing, stock, or lifecycle information?

Click below to explore more details on WIN SOURCE:

- ⊖ [View 1058TR on WIN SOURCE](#)
- ⊖ [Keystone Electronics Information](#)

Optimize Your Supply Chain with WIN SOURCE Solutions

- ✓ Global Sourcing Solution
- ✓ Obsolete Management
- ✓ Cost Control Management
- ✓ Shortage Management
- ✓ Alternative Solution
- ✓ Excess Inventory Management