



THE DATASHEET OF
2861006802

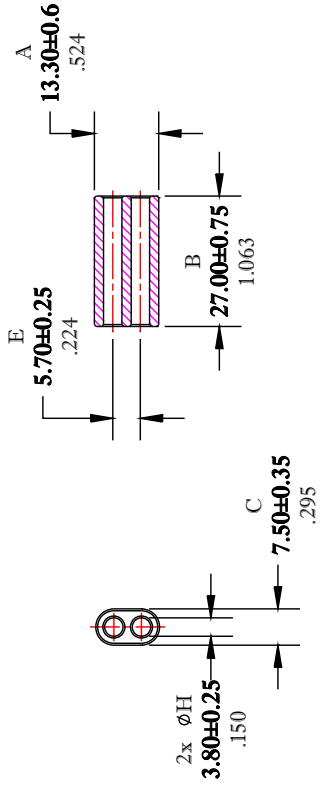


** Not all features are shown in this drawing. For more detailed information, please contact your Fair-Rite representative.

SIZE

UNCONTROLLED ~ CATALOG ~ DRAWING

B



ELECTRICAL SPECIFICATIONS

AL (nH) @ 10 kHz	$\tan \delta/\mu_i$ @ 1 MHz	$\tan \delta/\mu_i$ @ 10 MHz
600 Min.	$\leq 75 \times 10E-6$	$\leq 350 \times 10E-6$
N=5T-2H #26 AWG		

DIMENSIONS
BOLD NUMBERS ARE IN MILLIMETERS
 LIGHT NUMBERS ARE IN INCHES

TITLE	MULTI	DATE	SIZE
DRAWN BY	D. FOOTE	8/2/2019	B
CHKD BY			
APPRVD BY			

FR# 61

NOTES:

1 - BURNISH TO BREAK SHARP EDGES.

Looking for pricing, stock, or lifecycle information?

Click below to explore more details on WIN SOURCE:

 [View 2861006802 on WIN SOURCE](#)

 [FAIR-RITE PRODUCTS](#) Information

Optimize Your Supply Chain with WIN SOURCE Solutions

-  Global Sourcing Solution
-  Obsolete Management
-  Cost Control Management
-  Shortage Management
-  Alternative Solution
-  Excess Inventory Management