

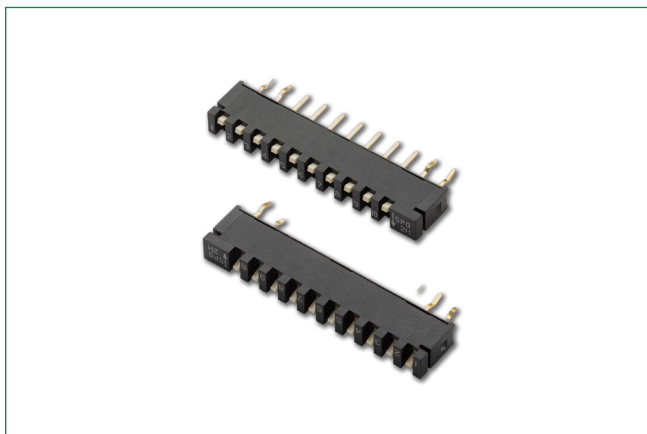


THE DATASHEET OF SPA04B



SPA Series

Single In-line Package Switches



Specifications

Contact Rating	Carry: 10 mA @ 5 VDC Switching: 0.1 mA @ 0.1m VDC min.
-----------------------	---

Mechanical Characteristics

Mechanical and Electrical Life	1,000 cycles min.
Contact Resistance	50 mΩ max. @ 20 VDC 10mA.
Insulation Resistance	100 MΩ min. @ 100 VDC
Dielectric Strength	1 minute @ 300 VAC

Environmental Characteristics

Storage Temperature	-40°C to 85°C
Operating Temperature	
Operating Force	5.9 N max.
Capacitance	5pF max. Between adjacent terminals.

Process

Soldering	Dip & look solderability testing per C&K spec. #448. Unplated edges of terminals permitted.
Packaging	Switches supplied in rigid dispensing tubes in full-tube quantities only, this may affect order quantity. Numbers of switches per tube varies with model.

Description

The SPA series DIP saves PCB space because of its thin single in-line packaging. Its retention feature holds part to PCB, prior to soldering – and its high-pressure contact system does not require tape sealing. SPA switch is typically used for function controls, logic switching, and address switching in industrial applications.

Features & Benefits

- Thin Single in-line packaging saves PCB space
- Retention feature holds part to PCB prior to soldering
- Available in vertical or right angle models
- High pressure contact system does not require tape sealing
- RoHS compliant

Applications

- Address switch for industrial controls
- Logic switching for computers and peripherals
- Function controlling for numerous applications

Materials

Base	PPS (UV 94 V-0)
Cover	PBT (UL94 V-0)
Actuator	4/6 Nylon (UL94 V-0)
Movable Contact	Beryllium Copper alloy, Gold over Nickel plate
Fixed Contact	Copper alloy, Gold over Nickel plate
Clip	Phosphor bronze wire. Phosphor bronze Tin over nickel plate.

Note: Specifications and materials listed above are for switches with standard options. For information on specific and custom switches, consult Customer Service Center.

SPA Series

Single In-line Package Switches



Ordering Number

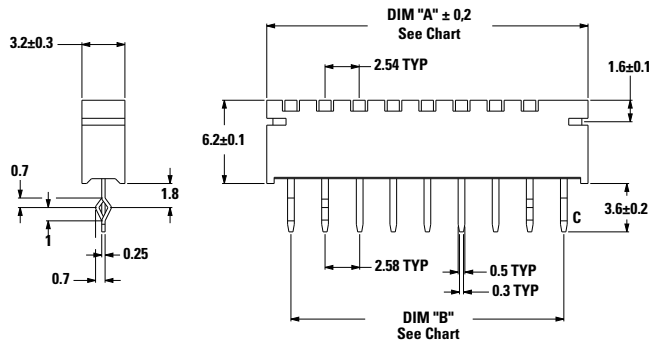
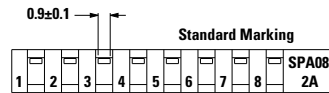
The Build-A Switch concept allows you to mix and match options to create the switch you need. Below is a complete listing of options shown in catalog. To order, simply select desired option from each category and place in the appropriate box. All switches supplied in "OFF" position.

SPAxx - x - B

<p>Number of Positions</p> <p>SPA02: 2 positions</p> <p>SPA04: 4 positions</p> <p>SPA06: 6 positions</p> <p>SPA08: 8 positions</p> <p>SPA10: 10 positions</p>	<p>Contact Material</p> <p>B: Gold</p>
<p>Termination</p> <p>None: Vertical</p> <p>A: Right Angle</p>	

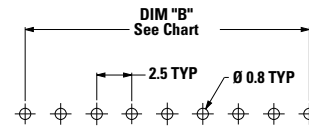
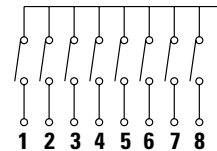
Vertical

SPA08B



ROHS Part #	No. Pos.	DIM 'A' inches (mm)	DIM 'B' inches (mm)	Quantity per Tube
SPA02B	2	0.342 (8.68)	0.200 (5.08)	50
SPA04B	4	0.542 (13.76)	0.400 (10.16)	30
SPA06B	6	0.742 (18.84)	0.600 (15.24)	25
SPA08B	8	0.942 (23.92)	0.800 (20.32)	20
SPA10B	10	1.142 (29.00)	1.000 (25.40)	15

Schematic SPST



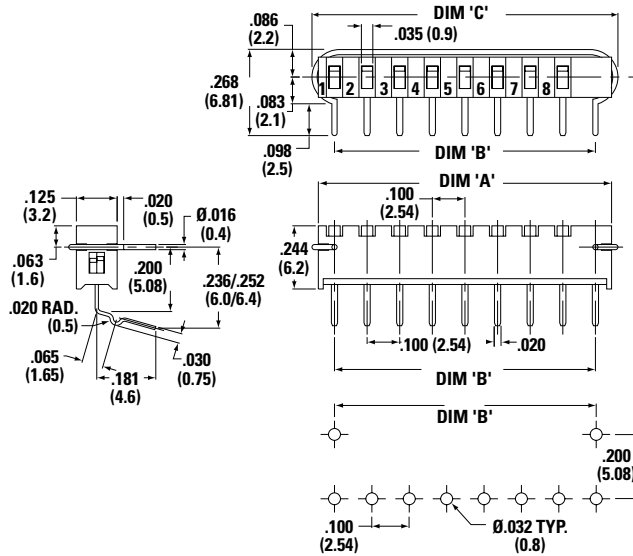
PCB Mounting Footprint

SPA Series

Single In-line Package Switches

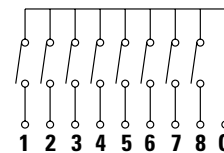


SPA08AB Right Angle



ROHS Part #	No. Pos.	DIM 'A' inches (mm)	DIM 'B' inches (mm)	DIM 'C' inches (mm)	Quantity per Tube
SPA02AB	2	0.342 (8.68)	0.200 (5.08)	0.339 (8.6)	50
SPA04AB	4	0.542 (13.76)	0.400 (10.16)	0.540 (13.7)	30
SPA06AB	6	0.742 (18.84)	0.600 (15.24)	0.736 (18.7)	25
SPA08AB	8	0.942 (23.92)	0.800 (20.32)	0.937 (23.8)	20
SPA10AB	10	1.142 (29.00)	1.000 (25.40)	1.138 (28.9)	15

Schematic SPST



Disclaimer Notice - Information furnished is believed to be accurate and reliable. However, users should independently evaluate the suitability of and test each product selected for their own applications. Littelfuse products are not designed for, and may not be used in, all applications. Read complete Disclaimer Notice at <http://www.littelfuse.com/disclaimer-electronics>.

Looking for pricing, stock, or lifecycle information?

Click below to explore more details on WIN SOURCE:

- ⊖ [View SPA04B on WIN SOURCE](#)
- ⊖ [C&K Components Information](#)

Optimize Your Supply Chain with WIN SOURCE Solutions

- ✓ Global Sourcing Solution
- ✓ Obsolete Management
- ✓ Cost Control Management
- ✓ Shortage Management
- ✓ Alternative Solution
- ✓ Excess Inventory Management