



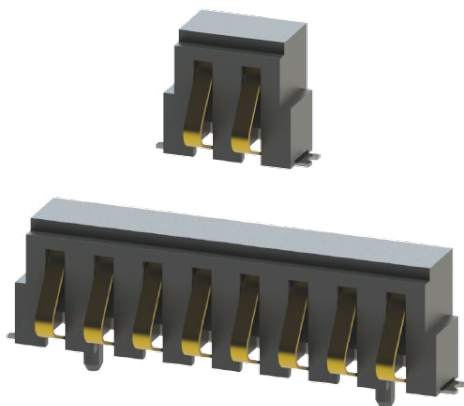
THE DATASHEET OF
009155003852006



VERTICAL MATE 2.0MM PITCH: 9155-800



General Information



The complete 9155 family of battery connectors from KYOCERA AVX offers the same advantages. They have ultra-reliable, robust, gold-plated beryllium copper contacts that provide high-integrity connections in harsh environments with up to 15,000 mating operations. The parts are supplied in tape and reel for automatic pick-and-place. The 9155 series battery connector can be customized to suit your applications, whatever your requirements.

The 9155-800 series, with a 2.0 mm pitch and vertical mating, eliminates end-user damage when pluggable modules or packs are pressed down vertically into a base unit. Traditional right-angle connectors rely on the pack being inserted at an angle and then rotated into position. This connector's unique contact design deflects cleanly and easily when a module or mating connector is pushed vertically into position, eliminating end-user damage. The 9155-800 series is rated for up to 5,000 mating cycles, and its contact nose has an anti-snag feature for protection during deflection.

APPLICATIONS

- Handheld/portable devices requiring docking or cradle charging
- Patient monitoring or portable medical electronics
- Industrial devices requiring pluggable or programming modules
- Internet appliances requiring battery back-up
- Product Specification: Refer to 201-01-204
- Application Notes: Refer to 201-01-205

FEATURES AND BENEFITS

- Gold plated BeCu contacts provide high electrical and mechanical performance over 5000 mating cycles
- Unique contact geometry allows for full vertical engagement in pluggable module applications
- Plastic locating bosses and SMT anchor tabs maximizes the mechanical stability of the connector in harsh conditions
- Contact nose incorporates an anti-snag feature to protect during deflection

ELECTRICAL

- Current Rating: 2p-4p: 2.0 Amps, 5p-8p: 1.5 Amps
- Voltage Rating: 125 VAC (RMS) or DC equivalent

ENVIRONMENTAL

- Operating Temperature: -40°C to +125°C
- Storage Temperature: -40°C to +70°C

MECHANICAL

- Insulator Material; Glass-Filled Nylon 46; UL94V0
- Contact Material: Beryllium Copper
- Plating: Gold over Nickel, Tin leads
- Durability: 5000 Cycles

HOW TO ORDER

00	9155	00X	8XX	00X
Prefix	Series	No. of Ways	Standard Battery Connector Right Angle Pitch 2.0mm	Plating Option
		002 = 2, 1000 Packing Qty. 003 = 3, 1000 Packing Qty. 004 = 4, 1000 Packing Qty. 005 = 5, 1000 Packing Qty. 006 = 6, 1000 Packing Qty. 007 = 7, 1000 Packing Qty. 008 = 8, 1000 Packing Qty.	852 = Boss: Yes 851 = Boss: No	006 = 0.4µm Selective Gold, Pure Tin Tail (Standard) 008 = 0.8µm Selective Gold, Pure Tin Tail



SALES DRAWINGS
CLICK TO DOWNLOAD



Looking for pricing, stock, or lifecycle information?

Click below to explore more details on WIN SOURCE:

 [View 009155003852006](#) on WIN SOURCE

 [AVX Corp/Kyocera Corp](#) Information

Optimize Your Supply Chain with WIN SOURCE Solutions

-  Global Sourcing Solution
-  Obsolete Management
-  Cost Control Management
-  Shortage Management
-  Alternative Solution
-  Excess Inventory Management