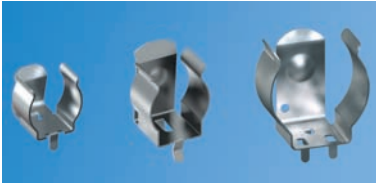




**THE DATASHEET OF**  
**629**



# PC BATTERY CLIPS



- Mounts securely to the PC board with advanced "Snap-In" design for thru hole mounting
- Reliable spring tension assures low contact resistance
- Low profile, economical design
- Retains battery securely to withstand shock and vibration
- AAAA, AAA, AA, N, 12V, 2/3A, 17-19mm



Refer to page 35 for Battery Contact Layout & Mounting Details

"AAAA" - "A27"

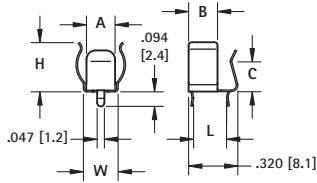


FIG. 1

"AAA" - "N" - "A23" - "AA" - "CR2"

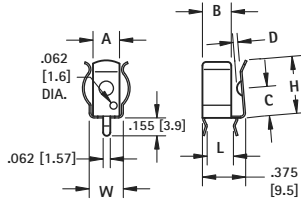


FIG. 2

"A" - 17-19mm\*

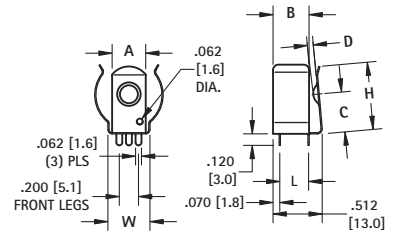


FIG. 3

\*17335, 17450, 17500, 17650, 18600, 18650 cells

MATERIAL: Spring Steel, Tin-Nickel Plate

CAT. NO.	FIG.	BATTERY SIZE	BATTERY DIAMETER	A	B	C	D	H	L	W	MATERIAL THICKNESS
51	1	"AAAA" - "A27"	.300-.350 (7.6-8.9)	.187 (4.8)	.187 (4.8)	.194 (4.9)	-	.320 (8.1)	.214 (5.4)	.226 (5.7)	.010 (.25)
82	2	"AAA" - "N" - "A23"	.375-.460 (9.5-11.7)	.250 (6.4)	.250 (6.4)	.280 (7.1)	.040 (1.0)	.498 (12.7)	.228 (5.8)	.296 (7.5)	.010 (.25)
52	2	"AA" - "CR2" - "A"	No Ears	.250 (6.4)	-	.280 (7.1)	.032 (0.8)	.498 (12.7)	.228 (5.8)	.250 (6.4)	.010 (.25)
92	2	"AA" - "CR2"	.531-.665 (13.5-16.9)	.312 (7.9)	.250 (6.4)	.359 (9.1)	.050 (1.3)	.593 (15.1)	.228 (5.8)	.369 (9.4)	.012 (.30)
2915	2	"AA" - "CR2"	.531-.665 (13.5-16.9)	.312 (7.9)	.250 (6.4)	.359 (9.1)	.050 (1.3)	.593 (15.1)	.228 (5.8)	.376 (9.5)	.015 (.38)
54	3	"A" - 17-19mm*	.669-.748 (17.0-19.0)	.350 (8.9)	.375 (9.5)	.385 (9.8)	.062 (1.6)	.653 (16.6)	.300 (7.6)	.438 (11.1)	.012 (.30)

\*Battery Reference: 2/3A, 17335, 17450, 17500, 17650, 18500, 18650 cells

## P.C. BUTTON & SPRING CONTACTS



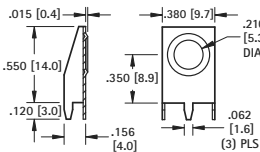
- Space saving design installs directly onto the PC board
- Suitable for .062 (1.57) to .093 (2.36) PC boards
- Reliable spring tension assures low contact resistance
- Ideal for self-contained battery compartments



### COIL SPRING

"AA" - "CR2" - "A"

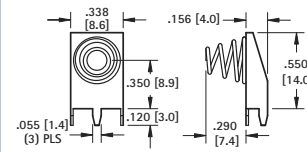
(+) POSITIVE BUTTON



MATERIAL:  
Frame: .015 (.38)  
Steel, Tin-Nickel Plate

CAT. NO. 595

(-) NEGATIVE SPRING

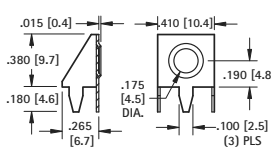


MATERIAL:  
Frame: .015 (.38) Steel,  
Matte Tin Plate

CAT. NO. 628

"AAA" - "N" - "A23"

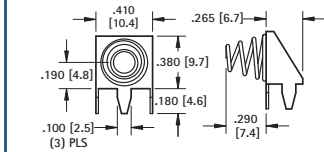
(+) POSITIVE BUTTON



MATERIAL:  
Frame: .015 (.38) Steel,  
Tin-Nickel Plate

CAT. NO. 637

(-) NEGATIVE SPRING



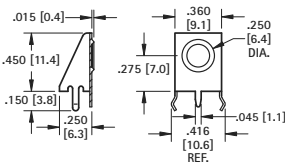
MATERIAL:  
Frame: .015 (.38)  
Steel, Matte Tin Plate

CAT. NO. 629

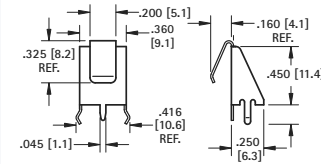
### LEAF SPRING

MATERIAL: .012 (.30) Spring Steel, Tin-Nickel Plate

"AA" - "CR2" - "A"



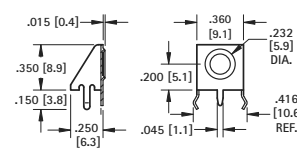
CAT. NO. 596



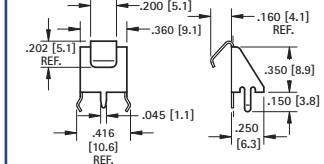
CAT. NO. 590

MATERIAL: .010 (.25) Spring Steel, Tin-Nickel Plate

"AAA" - "N" - "A23"





CAT. NO. 597



CAT. NO. 591

## Looking for pricing, stock, or lifecycle information?

Click below to explore more details on WIN SOURCE:

-  [View 629](#) on WIN SOURCE
-  [Keystone Electronics](#) Information

## Optimize Your Supply Chain with WIN SOURCE Solutions

-  Global Sourcing Solution
-  Obsolete Management
-  Cost Control Management
-  Shortage Management
-  Alternative Solution
-  Excess Inventory Management