



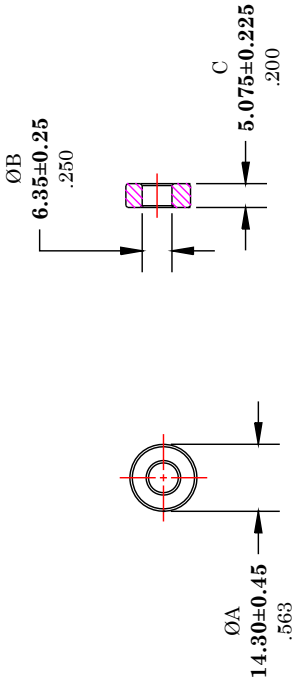
**THE DATASHEET OF**  
**2643540702**



\*\* Not all features are shown in this drawing. For more detailed information, please contact your Fair-Rite representative.

UNCONTROLLED ~ CATALOG ~ DRAWING

SIZE  
B



DIMENSIONS  
BOLD NUMBERS ARE IN MILLIMETERS  
LIGHT NUMBERS ARE IN INCHES

| ELECTRICAL SPEC              |            |                         |                         |            |
|------------------------------|------------|-------------------------|-------------------------|------------|
| $\Sigma L/A(\text{mm}^{-1})$ | $l_e$ (mm) | $A_e$ ( $\text{mm}^2$ ) | $V_e$ ( $\text{mm}^3$ ) | $L_o$ (nH) |
| 1.5250                       | 29.1       | 19.1                    | 556                     | 0.824      |

|  |           |           |         |       |
|--|-----------|-----------|---------|-------|
|  | TITLE     |           | ROUND S | SCALE |
|  | FAIR-RITE | ROUND S   | SCALE   |       |
|  | DRAWN BY  | DATE      | SIZE    |       |
|  | D. FOOTE  | 2/26/2020 | B       |       |
|  | CHKD BY   |           |         |       |
|  | APPRVD BY |           |         |       |

FR# 43

NOTES:

- 1 - BURNISH TO BREAK SHARP EDGES.
- 2 - IMPEDANCE MEASURED ON AN E4991A USING A 16092A TEST FIXTURE.

## Looking for pricing, stock, or lifecycle information?

Click below to explore more details on WIN SOURCE:

 [View 2643540702 on WIN SOURCE](#)

 [FAIR-RITE PRODUCTS](#) Information

## Optimize Your Supply Chain with WIN SOURCE Solutions

-  Global Sourcing Solution
-  Obsolete Management
-  Cost Control Management
-  Shortage Management
-  Alternative Solution
-  Excess Inventory Management