

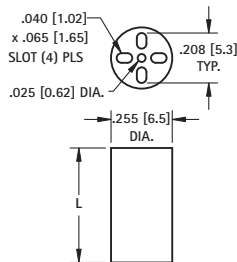
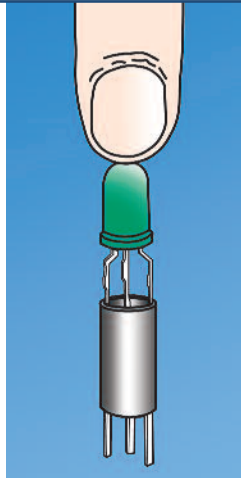


**THE DATASHEET OF**  
**8924**



# "UNIVERSAL" FOR T-1 & T-1 3/4

- Unique design separates leads and retains Tri-Lead and Bi-Lead components.
- Designed for PC board mounting of Tri-Lead and Bi-Lead T-1 and T-1 3/4 LEDs
- Provides height control, lead retention and stability.
- Also suitable for mounting lamps, resistors, transistors, diodes, capacitors, etc.



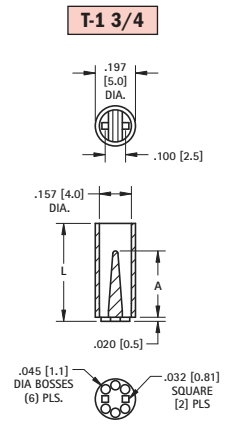
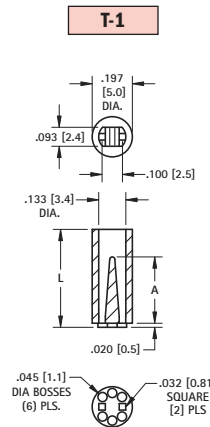
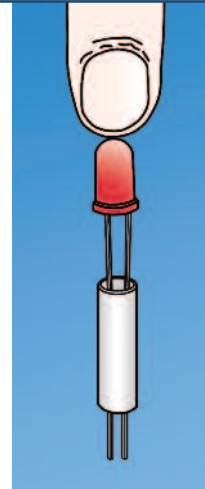
**MATERIAL:** Black PVC, UL Rated 94V-0

FOR T-1 3/4 and T-1			
CAT. NO.	L LENGTH	CAT. NO.	L LENGTH
8900	.120 (3.0)	8916	.400 (10.2)
8901	.140 (3.6)	8917	.420 (10.7)
8902	.160 (4.1)	8918	.440 (11.2)
8903	.180 (4.6)	8919	.450 (11.4)
8904	.200 (5.1)	8920	.460 (11.7)
8905	.220 (5.6)	8921	.480 (12.2)
8906	.240 (6.1)	8922	.500 (12.7)
8907	.250 (6.4)	8923	.550 (14.0)
8908	.260 (6.6)	8924	.600 (15.2)
8909	.280 (7.1)	8925	.650 (16.5)
8910	.300 (7.6)	8926	.700 (17.8)
8911	.320 (8.1)	8927	.750 (19.1)
8912	.340 (8.6)	8928	.800 (20.3)
8913	.350 (8.9)	8929	.850 (21.6)
8914	.360 (9.1)	8930	.900 (22.9)
8915	.380 (9.7)	8931	.925 (23.5)

# "SELF-ALIGNING" FOR BI-LEAD T-1 & T-1 3/4

## KEY FEATURES

- Positive self-alignment of leads on .100 (.25) centers.
- No special tools required
- This features an internally tapered barrier which guides the leads and eliminates crimping or shorting.
- The bottom bosses serve the dual purpose of heat dissipation and easy post soldering cleanup.





**MATERIAL:** Natural Nylon, UL Rated 94V-2

T-1 3/4	T-1	L LENGTH	A REF.	T-1 3/4	T-1	L LENGTH	A REF.	
8311	7351	.120 (3.0)	.075 (1.9)	8327	7367	.400 (10.2)	.325 (8.3)	
8312	7352	.140 (3.6)		8328	7368	.420 (10.7)		
8313	7353	.160 (4.1)		8329	7369	.440 (11.2)		
8314	7354	.180 (4.6)		8330	7370	.450 (11.4)		
8315	7355	.200 (5.1)		8331	7371	.460 (11.7)		
8316	7356	.220 (5.6)		8332	7372	.480 (12.2)		
8317	7357	.240 (6.1)		8333	7373	.500 (12.7)		
8318	7358	.250 (6.4)		8334	7374	.550 (14.0)		.450 (11.4)
8319	7359	.260 (6.6)		8335	7375	.600 (15.2)		
8320	7360	.280 (7.1)		8336	7376	.650 (16.5)		
8321	7361	.300 (7.6)	.190 (4.8)	8337	7377	.700 (17.8)	.575 (14.6)	
8322	7362	.320 (8.1)		8338	7378	.750 (19.1)		
8323	7363	.340 (8.6)		8339	7379	.800 (20.3)		
8324	7364	.350 (8.9)		8340	7380	.850 (21.6)		.690 (17.5)
8325	7365	.360 (9.1)		8341	7381	.900 (22.9)		
8326	7366	.380 (9.7)	.325 (8.3)	8342	7382	.925 (23.5)		

## Looking for pricing, stock, or lifecycle information?

Click below to explore more details on WIN SOURCE:

-  [View 8924 on WIN SOURCE](#)
-  [Keystone Electronics Information](#)

## Optimize Your Supply Chain with WIN SOURCE Solutions

-  Global Sourcing Solution
-  Obsolete Management
-  Cost Control Management
-  Shortage Management
-  Alternative Solution
-  Excess Inventory Management