



**THE DATASHEET OF**  
**302-200**

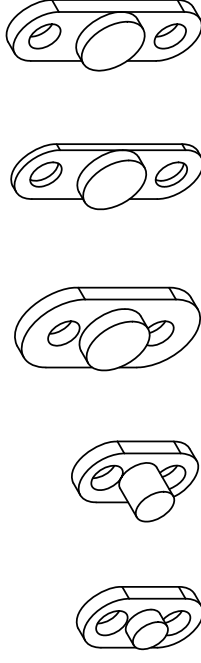
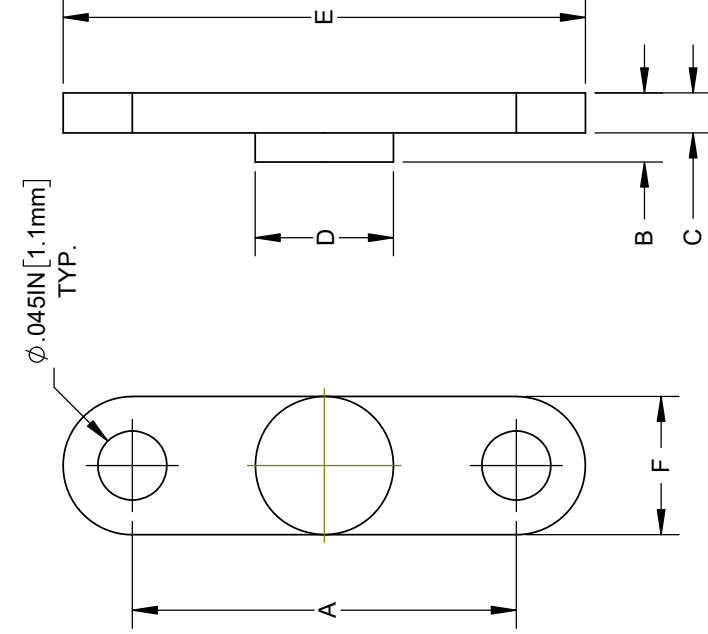


NOTES:

1. MATERIAL: NYLON 6/6, 94V-2, NATURAL

REV.	DESCR
D	RELEASE FOR QUOTATION
E	PRODUCTION RELEASE
F	REMOVED PART NO. IN F
G	REMOVE MATERIAL CODE
H	ECO- 1222, CHANGE DIM

Part No.	A	B	C	D	E	F
300-100	.100 [2.5mm]	.045 [1.1mm]	.022 [0.55mm]	.050 [1.3mm]	.180 [4.6mm]	.090 [2.3mm]
300-100-075	.098 [2.5mm]	.075 [1.9mm]	.022 [0.55mm]	.055 [1.4mm]	.180 [4.6mm]	.090 [2.3mm]
301-150	.150 [3.8mm]	.045 [1.1mm]	.022 [0.55mm]	.090 [2.3mm]	.270 [6.9mm]	.125 [3.2mm]
302-200-030	.200 [5.1mm]	.030 [0.76mm]	.011 [0.28mm]	.090 [2.3mm]	.290 [7.4mm]	.090 [2.3mm]
302-200-040	.200 [5.1mm]	.040 [1.0mm]	.022 [0.55mm]	.090 [2.3mm]	.290 [7.4mm]	.090 [2.3mm]
302-200	.200 [5.1mm]	.045 [1.1mm]	.022 [0.55mm]	.090 [2.3mm]	.290 [7.4mm]	.090 [2.3mm]
303-250	.252 [6.4mm]	.045 [1.1mm]	.026 [0.66mm]	.090 [2.3mm]	.340 [8.6mm]	.090 [2.3mm]
304-300	.300 [7.5mm]	.045 [1.1mm]	.026 [0.66mm]	.140 [3.6mm]	.390 [9.9mm]	.090 [2.3mm]
305-350	.350 [8.9mm]	.045 [1.1mm]	.030 [0.76mm]	.140 [3.6mm]	.440 [11.2mm]	.090 [2.3mm]
306-400	.402 [10.2mm]	.045 [1.1mm]	.030 [0.76mm]	.190 [4.8mm]	.490 [12.4mm]	.090 [2.3mm]
307-500	.500 [12.7mm]	.045 [1.1mm]	.030 [0.76mm]	.190 [4.8mm]	.590 [15.0mm]	.090 [2.3mm]

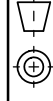


300-100 300-100-075 301-150 302-200-030 302-200-040

**CUSTOMER**

STANDARD TOLERANCE  
(UNLESS OTHERWISE SPECIFIED)


DECIMALS	ANGULAR
X ±.1	X° ±1°
.XX ±.01	
.XXX ±.005	



DESIGNED:	DATE:
M.CHEN	03/07/200
REVISED:	DATE:
A.VALDEZ	09/12/202
CHECKED:	DATE:
R.PEREYRA	09/12/202

## Looking for pricing, stock, or lifecycle information?

Click below to explore more details on WIN SOURCE:

 [View 302-200 on WIN SOURCE](#)

 [Bivar Inc. Information](#)

## Optimize Your Supply Chain with WIN SOURCE Solutions

-  Global Sourcing Solution
-  Obsolete Management
-  Cost Control Management
-  Shortage Management
-  Alternative Solution
-  Excess Inventory Management