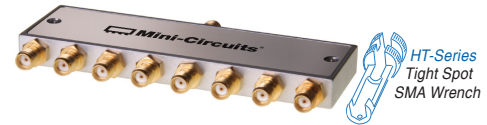


Coaxial

Power Splitter/Combiner

ZCSC-8-13-S+

8 Way-0° 50Ω 5 to 1000 MHz



Maximum Ratings

Operating Temperature	-55°C to 100°C
Storage Temperature	-55°C to 100°C
Power Input (as a splitter)	0.5W max.
Internal Dissipation	0.875W max.
Permanent damage may occur if any of these limits are exceeded.	

Coaxial Connections

SUM PORT	S
PORT 1,2,3,4,5,6,7,8	1,2,3,4,5,6,7,8

Features

- wide band frequency, 5 to 1000 MHz
- excellent input matching, VSWR 1.35 typ.
- excellent output matching, VSWR 1.25 typ.

Applications

- CATV
- VHF/UHF

CASE STYLE: UJ215

Connectors	Model
SMA	ZCSC-8-13-S+

+RoHS Compliant

The +Suffix identifies RoHS Compliance. See our web site for RoHS Compliance methodologies and qualifications

Electrical Specifications

FREQ. RANGE (MHz)	ISOLATION (dB)		INSERTION LOSS (dB) ABOVE 9.0 dB		PHASE UNBALANCE (Degrees)	AMPLITUDE UNBALANCE (dB)	VSWR (:1)	
	Typ.	Min.	Typ.	Max.			S Typ.	OUT Typ.
f_L - f_U					Max.	Max.		
5-50	34	20	0.5	1.5	5	1.0	1.05	1.35
50-500	22	18	1.2	2.2	10	0.7	1.05	1.20
500-1000	20	16	1.8	3.0	15	1.3	1.20	1.15

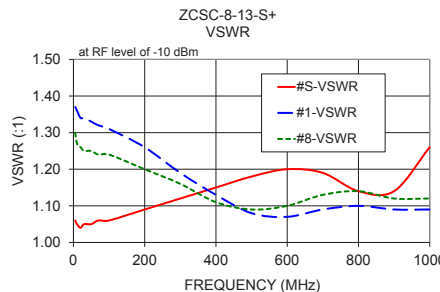
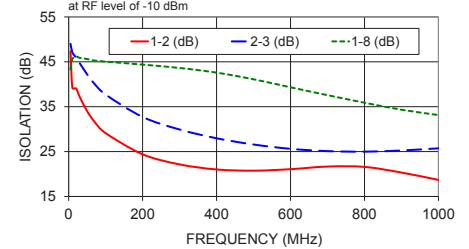
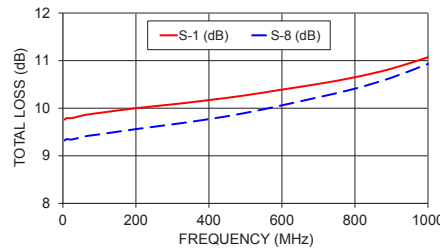
Typical Performance Data

Freq. (MHz)	Total Loss ¹ (dB)						Amp. Unbal. (dB)	Isolation (dB)				Phase Unbal. (deg.)	VSWR S	VSWR 1	VSWR 8
	S-1	S-2	S-3	S-4	S-6	S-8		1-2	1-8	2-3	4-5				
5.00	9.76	9.60	9.62	9.46	9.46	9.32	0.44	47.36	43.32	49.01	43.33	0.96	1.06	1.37	1.30
10.00	9.79	9.62	9.64	9.49	9.46	9.35	0.44	39.19	45.59	47.12	45.66	0.75	1.05	1.36	1.27
20.00	9.79	9.61	9.63	9.49	9.46	9.34	0.44	39.09	46.15	45.92	45.94	0.34	1.04	1.34	1.26
30.00	9.80	9.63	9.64	9.50	9.47	9.35	0.45	37.15	45.88	44.67	45.55	0.22	1.05	1.34	1.25
50.00	9.84	9.66	9.68	9.54	9.51	9.39	0.45	34.00	45.61	42.19	45.52	0.25	1.05	1.33	1.25
70.00	9.87	9.70	9.71	9.56	9.54	9.42	0.45	31.62	45.27	40.07	45.47	0.26	1.06	1.32	1.24
100.00	9.90	9.73	9.74	9.60	9.58	9.45	0.46	29.10	45.04	37.68	44.94	0.33	1.06	1.31	1.24
200.00	10.00	9.83	9.85	9.71	9.69	9.56	0.44	24.39	44.37	32.71	44.87	0.54	1.09	1.26	1.20
300.00	10.08	9.91	9.93	9.80	9.79	9.66	0.42	22.14	43.62	29.91	44.19	0.79	1.12	1.19	1.16
400.00	10.17	10.00	10.03	9.90	9.91	9.77	0.40	21.01	42.58	27.96	43.32	1.00	1.15	1.13	1.11
500.00	10.27	10.11	10.14	10.02	10.05	9.90	0.37	20.74	41.10	26.57	41.28	1.21	1.18	1.08	1.09
600.00	10.39	10.23	10.27	10.16	10.22	10.06	0.33	21.07	39.31	25.61	39.25	1.43	1.20	1.07	1.10
700.00	10.51	10.36	10.40	10.31	10.41	10.23	0.31	21.66	37.56	25.10	37.09	1.65	1.19	1.09	1.13
800.00	10.65	10.50	10.56	10.48	10.62	10.41	0.32	21.58	35.88	24.98	35.53	1.90	1.14	1.10	1.14
900.00	10.83	10.68	10.76	10.69	10.87	10.64	0.32	20.32	34.32	25.24	34.24	2.21	1.14	1.09	1.12
1000.00	11.07	10.93	11.02	10.96	11.18	10.93	0.32	18.69	33.13	25.72	33.48	2.52	1.26	1.09	1.12

ZCSC-8-13-S+ TOTAL LOSS

1. Total Loss = Insertion Loss + 9dB splitter loss.

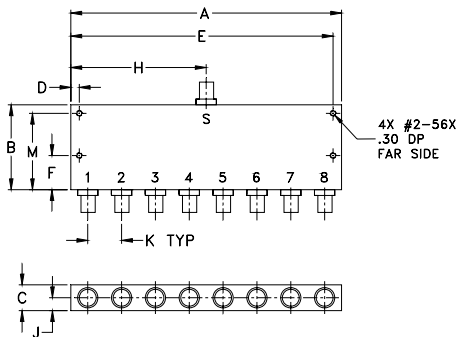
ZCSC-8-13-S+ ISOLATION



electrical schematic



Outline Drawing



Outline Dimensions (inch/mm)

A	B	C	D	E	F
4.00	1.25	.38	.125	3.875	.500
101.60	31.75	9.65	3.18	98.43	12.70
G	H	J	K	M	wt
--	2.00	.19	.500	1.125	grams
--	50.80	4.83	12.70	28.58	77

Notes

- Performance and quality attributes and conditions not expressly stated in this specification document are intended to be excluded and do not form a part of this specification document.
- Electrical specifications and performance data contained in this specification document are based on Mini-Circuit's applicable established test performance criteria and measurement instructions.
- The parts covered by this specification document are subject to Mini-Circuits standard limited warranty and terms and conditions (collectively, "Standard Terms"); Purchasers of this part are entitled to the rights and benefits contained therein. For a full statement of the Standard Terms and the exclusive rights and remedies thereunder, please visit Mini-Circuits' website at www.minicircuits.com/WCLStore/terms.jsp



Looking for pricing, stock, or lifecycle information?

Click below to explore more details on WIN SOURCE:

 [View ZCSC-8-13-S+ on WIN SOURCE](#)

 [Mini-Circuits Information](#)

Optimize Your Supply Chain with WIN SOURCE Solutions

-  Global Sourcing Solution
-  Obsolete Management
-  Cost Control Management
-  Shortage Management
-  Alternative Solution
-  Excess Inventory Management