

SHT-13 | Multifunction digital time switch with Wi-Fi connection

ALL IN ONE
daily
weekly
yearly
astro
PROGRAM

5 YEAR
WARRANTY

WEB
SERVER

WI-FI
2.4 GHz

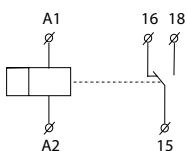


EAN code
SHT-13/1: 8595188189071
SHT-13/2: 8595188184854

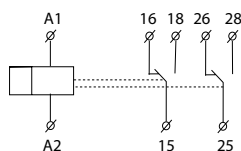
Technical parameters	SHT-13/1	SHT-13/2
Supply terminals:	A1-A2	
Supply voltage:	AC/DC 24 – 240 V (AC 50-60 Hz)	
Consumption (max.):	Wi-Fi "OFF" 0.5 W/2 VA "ON" 1 W/3 VA	
Supply voltage tolerance:	-15 %; +10 %	
Output		
Contact type:	1x changeover (AgSnO ₂)	2x changeover (AgSnO ₂)
Current rating:	16 A/AC1; 1 HP 240 Vac, 1/2 HP 120 Vac; PD. B300	
Breaking capacity:	4000 VA/AC1, 384 W/DC1	
Inrush current:	30 A/< 3 s	
Switching voltage:	250 V AC/24 V DC	
Power dissipation (max.):	1.2 W	2.4 W
Mechanical life:	30.000.000 ops.	
Electrical life (AC1):	100.000 ops.	
Time circuit		
Accuracy:	max. ±0.5 s/day at 23°C (73.4 °F)	
Min. switching interval:	1 s	
Data retention time:	min. 10 years	
Set time backup:	up to half a year with 60 outages (CR 2032 - 3V)	
Program circuit		
Number of memory locations:	200 - time programs, 30 - holidays	
Program type:	daily, weekly, yearly, astro	
Displayed data:	LCD display with white backlight	
Settings via website:	by Wi-Fi (2.4 GHz)	
Other information		
Operating temperature:	-20 .. +55 °C (-4 .. 131 °F)	
Storage temperature:	-30 .. +70 °C (-22 .. 158 °F)	
Dielectric strength:		
supply – output	AC 4 kV	
output 1 – output 2	AC 4 kV	
Operating position:	any	
Mounting:	DIN rail EN 60715	
Protection degree:	IP40 front panel / IP20 terminals	
Oversvoltage category:	III.	
Pollution degree:	2	
Cross-wire section – solid/ stranded with ferrule (mm ²):	max. 1x 2.5, 2x 1.5/ max. 1x 2.5 (AWG 14)	
Dimensions:	90 × 35 × 64 mm (3.5" × 1.4" × 2.5")	
Weight:	122 g (4.3 oz)	135 g (4.8 oz)
Standards:	EN 61812-1	

Symbol

SHT-13/1



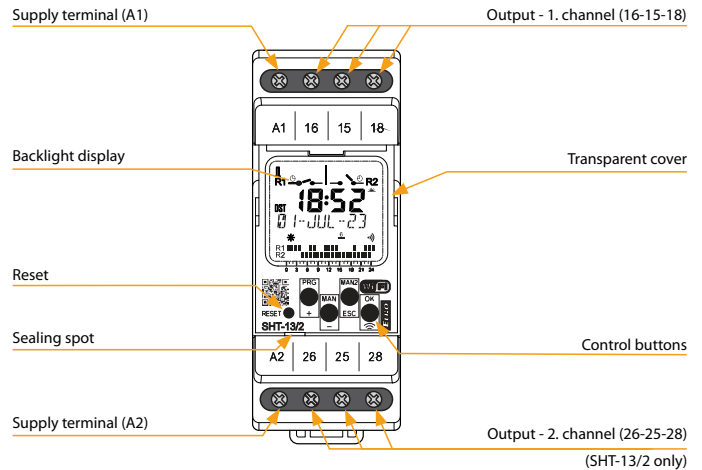
SHT-13/2



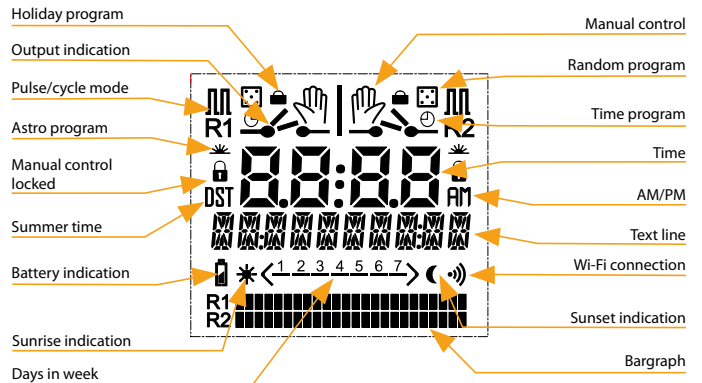
- All programs in one device (daily, weekly, yearly and astronomical).
- UNiversal supply voltage in range of AC/DC 24 – 240 V (AC 50-60 Hz).
- Simple setting after the first start-up.
- User replaceable battery to back up the set time during power outages.
- Built-in web server for setup and control via Wi-Fi connection.
- Time synchronization through NTP server (require internet connection).
- Possibility of permanent connection to the local network.
- New well-arranged display with white backlight.
- ASTROnomic program: manual entry of coordinates or selecting from one of more then 500 preset cities.
 - selection of days of the week
 - astro interrupt function (night break): controls the sunrise/sunset times and compares them with the set OFF/ON times
 - high position accuracy thanks to two decimal places in latitude/logitude
- One/two channel design (each with an operating hours counter).
- Pulse/cycle output mode.
- Transition of summer/winter time – AUTO or OFF.
- Sealable transparent front panel cover.
- PIN code protection against unauthorized changes.
- Wireless firmware update - **current version 1.46**

Description

SHT-13/2

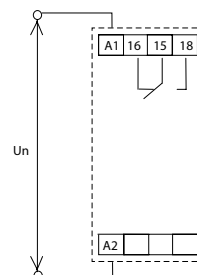


Description of displayed elements

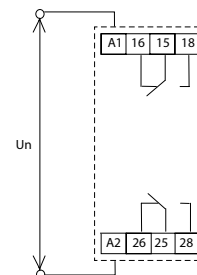


Connection

SHT-13/1





SHT-13/2



Looking for pricing, stock, or lifecycle information?

Click below to explore more details on WIN SOURCE:

-  [View SHT-13/2 on WIN SOURCE](#)
-  [ELKO EP North America LLC Information](#)

Optimize Your Supply Chain with WIN SOURCE Solutions

-  Global Sourcing Solution
-  Obsolete Management
-  Cost Control Management
-  Shortage Management
-  Alternative Solution
-  Excess Inventory Management