

CRM-91H, CRM-92H, CRM-93H | Multifunction time relays



EAN code
 CRM-91H/UNI: 8595188112420
 CRM-92H/UNI: 8595188176897
 CRM-93H/UNI: 8595188112468

Technical parameters CRM-91H CRM-92H CRM-93H

Power supply		CRM-91H	CRM-92H	CRM-93H
Supply terminals:		A1 - A2		
Voltage range:		AC/DC 12 - 240 V (AC 50-60 Hz)		
Power input (max.):	UNI	2 VA/1.5 W	2.5 VA/1.5 W	2.5 VA/1.5 W
Voltage range:	230	AC 230 V (50/60 Hz)		
Power input (max.):		3VA/1.4W	-	4VA/2W
Supply voltage tolerance:		-15 %; +10 %		
Supply indication:		green LED		

Time circuit	
Number of functions:	10
Time ranges:	0.1 s - 10 days
Time setting:	rotary switch and potentiometer
Time deviation:	5 % - mechanical setting
Repeat accuracy:	0.2 % - set value stability
Temperature coefficient:	0.01 %/°C, at = 20 °C (0.01 %/°F, at = 68 °F)

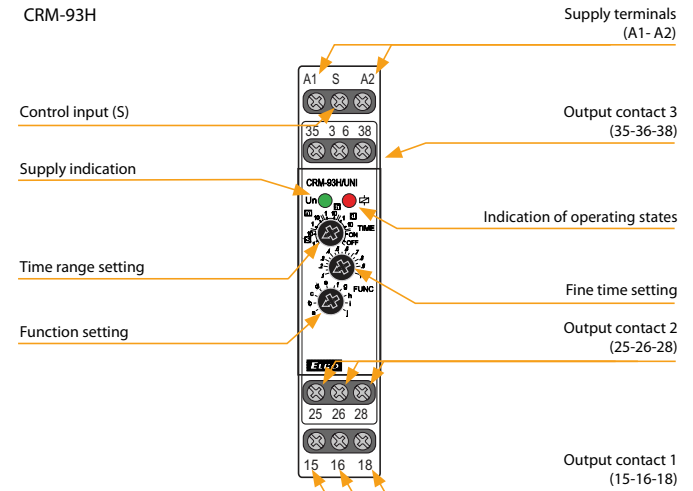
Output	
Number of contacts 1:	1x changeover/SPDT (AgNi)
Current rating:	16 A/AC1; 1 HP 240 Vac, 1/2 HP 120 Vac; PD. B300
Breaking capacity:	4000 VA/AC1, 384 W/DC
Electrical life (AC1):	100.000 ops.
Number of contacts 2 (3):	x 1x chang./SPDT (AgNi) 2x chang./DPDT (AgNi)
Current rating:	x 16 A/AC1; 1 HP 240 Vac, 8 A/AC1; 1/2 HP 240Vac; PD. B300
Breaking capacity:	x 4000 VA/AC1, 384 W/DC 2000 VA/AC1, 192 W/DC
Electrical life (AC1):	x 100.000 ops. 50.000 ops.
Switching voltage:	250 V AC/24 V DC
Max. power dissipation:	1.2 W 2.4 W 2.4 W
Mechanical life:	10.000.000 ops.

Control	
Control terminals:	A1-S
Load between S-A2:	Yes
Impulse length:	min. 25 ms/max. unlimited
Reset time:	max. 150 ms

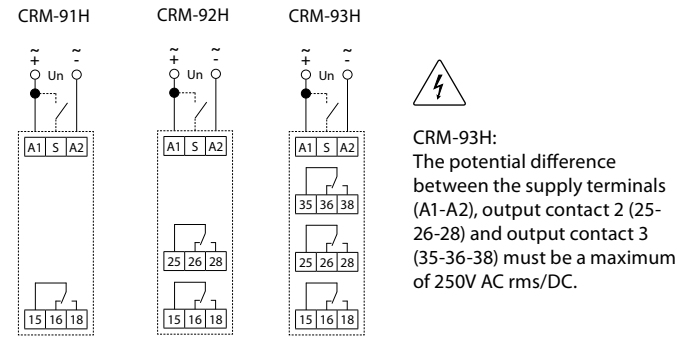
Other information	
Operating temperature:	-20 .. +55 °C (-4 .. 131 °F)
Storage temperature:	-30 .. +70 °C (-22 .. 158 °F)
Dielectric strength:	
supply - output 1	4kV AC
supply - output 2 (3)	x 4kV AC 1kV AC
output 1 - output 2	x 4kV AC 1kV AC
output 2 - output 3	x x 1kV AC
Operating position:	any
Mounting:	DIN rail EN 60715
Protection degree:	IP40 front panel/IP20 terminals
Overvoltage category:	III.
Pollution degree:	2
Max. cable size (mm ²):	solid wire max. 1x 2.5 or 2x 1.5/ with sleeve max. 1x 2.5 (AWG 12)
Dimensions:	90 x 17.6 x 64 mm (3.5" x 0.7" x 2.5")
Weight:	UNI - 62 g (2.2 oz) UNI - 85 g (3 oz) UNI - 85 g (3 oz) 230 - 57 g (2 oz) - 230 - 80 g (2.8 oz)
Standards:	EN 61812-1

- Multifunction time relay for universal use in automation, control and regulation or in house installations.
- Comfortable and well-arranged function and time-range setting by rotary switches.
- Multifunction red LED flashes or shines depending on the operating status.

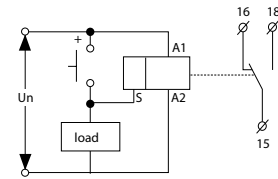
Description



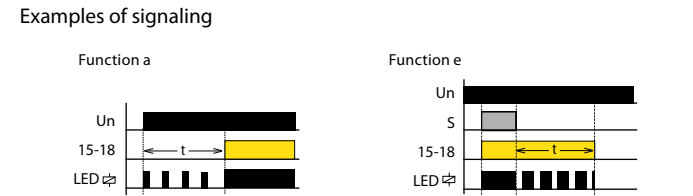
Connection



Possibility to connect load onto controlling input
 It is possible to connect the load (e.g.: contactor) between terminals S-A2, without any interruption of correct relay function.



Indication of operating states



Function



ON DELAY

When the input voltage U is applied, timing delay t begins. Relay contacts R change state after time delay is complete. Contacts R return to their shelf state when input voltage U is removed. Trigger switch is not used in this function.



INTERVAL ON

When input voltage U is applied, relay contacts R change state immediately and timing cycle begins. When time delay is complete, contacts return to shelf state. When input voltage U is removed, contacts will also return to their shelf state. Trigger switch is not used in this function.



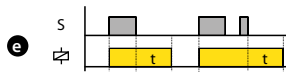
FLASHER - OFF first

When input voltage U is applied, time delay t begins. When time delay t is complete, relay contacts R change state for time delay t. This cycle will repeat until input voltage U is removed. Trigger switch is not used in this function.



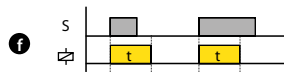
FLASHER - ON first

When input voltage U is applied, relay contacts R change state immediately and time delay t begins. When time delay t is complete, contacts return to their shelf state for time delay t. This cycle will repeat until input voltage U is removed. Trigger switch is not used in this function.



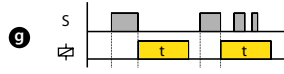
OFF DELAY

Input voltage U must be applied continuously. When trigger switch S is closed, relay contacts R change state. When trigger switch S is opened, delay t begins. When delay t is complete, contacts R return to their shelf state. If trigger switch S is closed before time delay t is complete, then time is reset. When trigger switch S is opened, the delay begins again, and relay contacts R remain in their energized state. If input voltage U is removed, relay contacts R return to their shelf state.



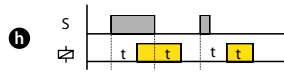
SINGLE SHOT

Upon application of input voltage U, the relay is ready to accept trigger signal S. Upon application of the trigger signal S, the relay contacts R transfer and the preset time t begins. During time-out, the trigger signal S is ignored. The relay resets by applying the trigger switch S when the relay is not energized.



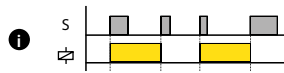
SINGLE SHOT falling edge

Upon application of input voltage U, the relay is ready to accept trigger signal S. Upon application of the trigger signal S, the relay contacts R transfer and the preset time t begins. At the end of the preset time t, the relay contacts R return to their normal condition unless the trigger switch S is opened and closed prior to time out t (before preset time elapses). Continuous cycling of the trigger switch S at a rate faster than the preset time will cause the relay contacts R to remain closed. If input voltage U is removed, relay contacts R return to their shelf state.



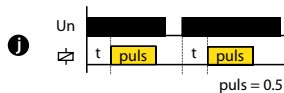
ON/OFF DELAY

Input voltage U must be applied continuously. When trigger switch S is closed, time delay t begins. When time delay t is complete, relay contacts R change state and remain transferred until trigger switch S is opened. If input voltage U is removed, relay contacts R return to their shelf state.



MEMORY LATCH

Input voltage U must be applied continuously. Output changes state with every trigger switch S closure. If input voltage U is removed, relay contacts R return to their shelf state.



PULSE GENERATOR

Upon application of input voltage U, a single output pulse of 0.5 seconds is delivered to relay after time delay t. Power must be removed and reapplied to repeat pulse. Trigger switch is not used in this function.

Looking for pricing, stock, or lifecycle information?

Click below to explore more details on WIN SOURCE:

- ⊖ [View CRM-93H/UNI on WIN SOURCE](#)
- ⊖ [ELKO EP North America LLC Information](#)

Optimize Your Supply Chain with WIN SOURCE Solutions

- ✓ Global Sourcing Solution
- ✓ Obsolete Management
- ✓ Cost Control Management
- ✓ Shortage Management
- ✓ Alternative Solution
- ✓ Excess Inventory Management