



**THE DATASHEET OF
SKS-200**





- The SKS-200 is an external photo sensor designed for use with the SOU-2 dusk/dawn and ambient light switch.
- It can be mounted into a panel hole 0.79 inches in diameter using a screw-in transparent cover.
- A plastic wall-mount bracket is included for mounting to walls or other flat surfaces.
- Rated IP65, suitable for outdoor use and dusty environments.

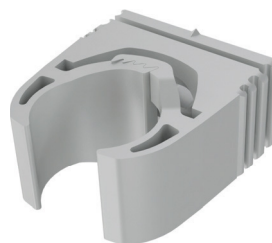
EAN code
SKS-200: 8595188182331

Technical Specifications

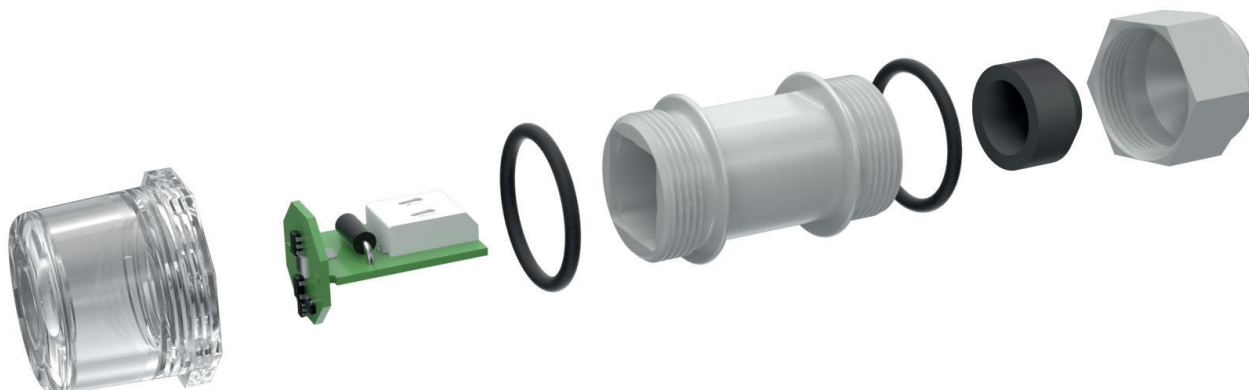
SKS-200

Operating principle:	Light sensor with current output
Output current range:	
0 lx	0,7 mA
50.000 lx	5,5 mA
Maximum voltage (input):	10V DC
Operating temperature:	-22 °F to +158 °F
Storage temperature:	-22 °F to +158 °F
Environmental protection:	IP 65
Terminal type:	Spring clamp, tool-free
Connection type:	2-wire, polarity-independent
Wire size:	solid core: 24 to 18 AWG stranded with ferrule: 23 to 22 AWG
Cable diameter:	max. 0.26 inches
Cable length:	max. 164 feet
Sensor dimensions:	2.28 inches long x 0.94-inch diameter
Sensor weight:	0.56 ounces

Plastic mounting bracket





Device Description



Looking for pricing, stock, or lifecycle information?

Click below to explore more details on WIN SOURCE:

-  [View SKS-200 on WIN SOURCE](#)
-  [ELKO EP North America LLC Information](#)

Optimize Your Supply Chain with WIN SOURCE Solutions

-  Global Sourcing Solution
-  Obsolete Management
-  Cost Control Management
-  Shortage Management
-  Alternative Solution
-  Excess Inventory Management