

SKS-100 | Photosensor



EAN code
SKS-100: 8594030337288

Technical parameters	SKS-100
V_{max} :	100 V DC
P_{max} :	90 mW
λ_{smax} :	540 nm
R_{totx} :	2 - 6 k Ω
R_{min} :	150 k Ω
Operating temperature:	-30 to +70 °C (-22 to 158 °F)
Storage temperature:	-30 to +70 °C (-22 to 158 °F)
Protection degree:	IP 65
Terminal block:	Push-in terminals
Cable size cross section:	Solid: 0.2 to 0.75 mm ² (32 - 21 AWG) stranded + cable end: 0.25 to 0.34 mm ² (30-28 AWG)
Ø of connecting cable:	max. 6.5 mm (0.3")
Sensor cable length:	max. 50 m (164')
Dimensions:	58 x 24 mm (2 x 0.9")
Weight:	20 g

V_{max} : maximum operating voltage (maximal value at darkening)

P_{max} : maximum power dissipation (at 25 °C/77 °F)

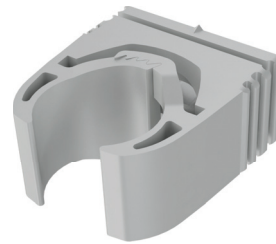
λ_{smax} : wavelength for maximum sensitivity

R_{totx} : resistance at light intensity 10 lx and a colour temperature 2856 °K

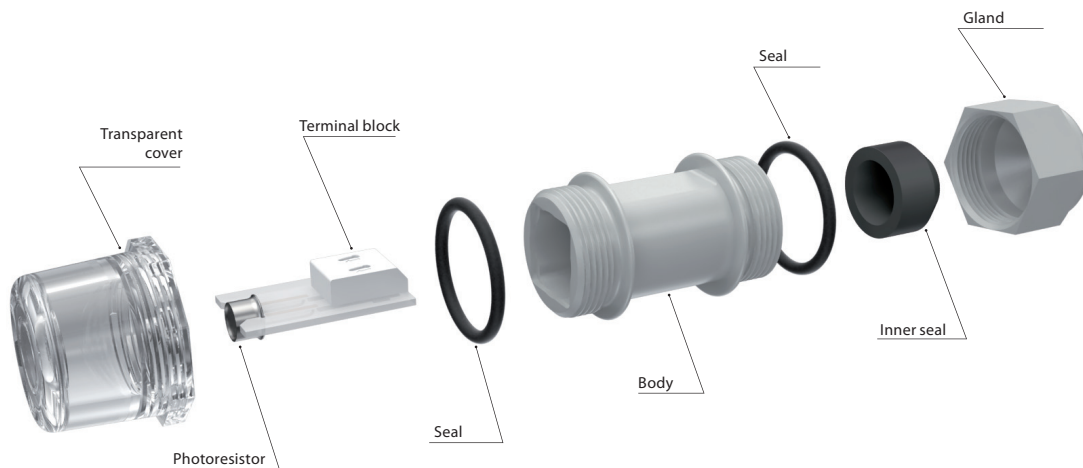
R_{min} : dark resistance (the minimum resistance value after breaking illumination)

- **SKS-100:** external photosensor for twilight switch SOU-1 and Light intensity controller LIC-1 and LIC-2.
- Sensor is installable to panel (by screw-able transparent cover) to opening with diameter 20 mm (0.6")
- A part of the sensor is a plastic holder for placing into the wall or to another place.
- Protection degree is IP65.

Holder





Description



Looking for pricing, stock, or lifecycle information?

Click below to explore more details on WIN SOURCE:

-  [View SKS-100 on WIN SOURCE](#)
-  [ELKO EP North America LLC Information](#)

Optimize Your Supply Chain with WIN SOURCE Solutions

-  Global Sourcing Solution
-  Obsolete Management
-  Cost Control Management
-  Shortage Management
-  Alternative Solution
-  Excess Inventory Management