



**THE DATASHEET OF  
VS316/24V RED**



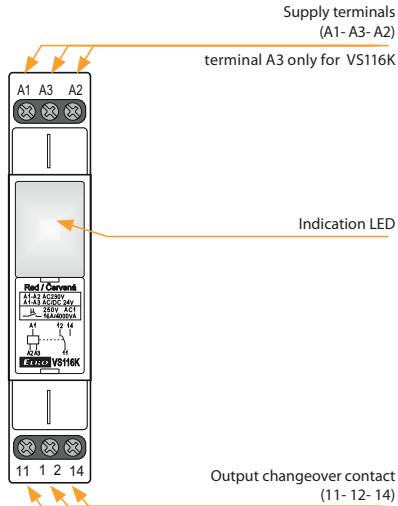


- Power relay used for switching larger load output, strengthen or „multiplying“ contacts of the existing device.
- Relays VS316/24, VS316/230 enable connection to a 3-phase circuit.
- In the design 1-MODULE , DIN rail mounting, output status indicated by high intensity LED with choice of LED color (red, green, blue or white LED\*).
- VS116B/230 MINI, mounting in installation box or ceilings, enabling switching of lights, motors for blinds or awnings.
- For VS116B/230 status of output indicated by LED on front panel of device.

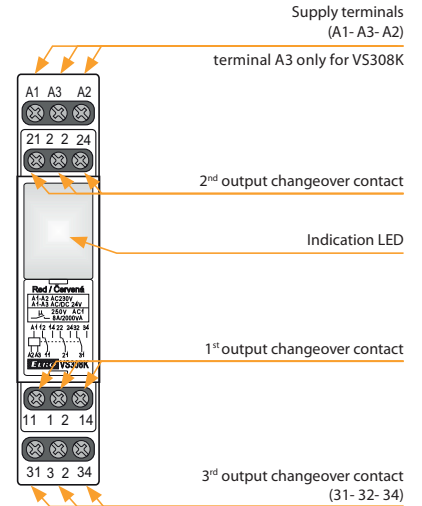
Technical parameters	VS116B/230	VS116K	VS116U	VS308K	VS308U	VS316/24	VS316/230
Supply terminals:	L - N		A1 - A2				
Voltage range:	AC 230 V (50-60 Hz)	AC 230 V (50-60 Hz)	AC/DC 12-240 V (50-60 Hz)	AC 230 V (50-60 Hz)	AC/DC 12-240 V (50-60 Hz)	AC/DC 24 V (50-60 Hz)	AC 230 V (50-60 Hz)
Burden (max.):	AC 7.5 VA 1 W	AC 7.5 VA 1 W	AC 0.7 - 3 VA/DC 0.5 - 1.7 W	AC 10.3 VA 1.1 W	AC 0.7 - 3 VA/DC 0.5 - 1.7 W	1.6 VA 1.2 W	2.5 VA
Supply terminals:	x	A1 - A3	x	A1 - A3		x	
Voltage range:	x	AC/DC 24 V (AC 50-60 Hz)	x	AC/DC 24 V (AC 50-60 Hz)		x	
Burden:	x	AC 1 VA/DC 1W	x	AC 1 VA/DC 1W		x	
Supply voltage tolerance:	-15%; +10%						
Max. dissipated power (Un + terminals):	4 W			3 W		8 W	6 W
<b>Output</b>							
Number of contacts:	1 x changeover/SPDT (AgSnO <sub>2</sub> )			3 x changeover/TPDT (AgNi/Silver Alloy)		3 x changeover/TPDT (AgSnO <sub>2</sub> )	
Current rating:	16 A/AC1; 1 HP 240Vac, 1/2 HP 120Vac; PD. B300			8 A/AC1; 1/2 HP 240Vac; PD. B300		16A/AC1; 1 HP 240Vac, 1/2 HP 120Vac; PD. B300	
Breaking capacity:	4000VA/AC1, 384W/ DC			2000VA/AC1, 192W/ DC		4000VA/AC1, 384W/DC	
Inrush current:	30 A/<3 s			10 A/<3 s		30 A/<3 s	
Switching voltage:	250V AC/24V DC						
Output indication:	red LED	high intensity LED					
Mechanical life:	30.000.000 ops.						
Electrical life (AC1):	100.000 ops.			60.000 ops.		100.000 ops.	
Time between switching:	min. 2s					20 ms	50 ms
<b>Other information</b>							
Operating temperature:	-20 .. +55 °C (-4 .. 131 °F)						
Storage temperature:	-30 .. +70 °C (-22 .. 158 °F)						
Dielectric strength:	4 kV (supply-output)						
Operating position:	any						
Mounting:	free at connecting wire	DIN rail EN 60715					
Protection degree:	IP30	IP40 from front panel/IP20 terminals					
Overvoltage category:	III.						
Pollution degree:	2						
Max. cable size (mm <sup>2</sup> ):	2x 0.75 mm <sup>2</sup> (AWG 18), 3x 2.5 mm <sup>2</sup> (AWG 10)	max. 1x 2.5 or 2x 1.5 max. 1x 2.5 (AWG 12)					
Dimensions:	49 x 49 x 21 mm (2" x 2" x 0.8")	90 x 17.6 x 64 mm (3.5" x 0.7" x 2.5")					
Weight:	48 g (1.7 oz.)	56 g (2 oz.)	59 g (2.1 oz.)	78 g (2.75 oz.)	80 g (2.8 oz.)	90 g (3.17 oz.)	93 g (3.3 oz.)
Standards:	EN 60669-1, EN 60669-2-1						

Description

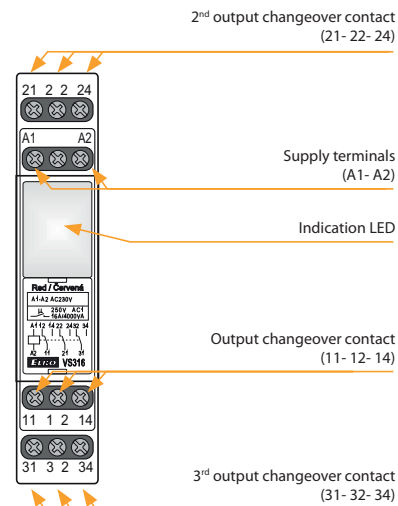
VS116K, VS116U



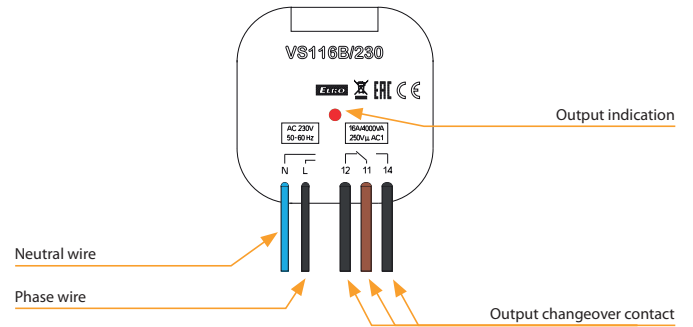
VS308K, VS308U



VS316/24, VS316/230

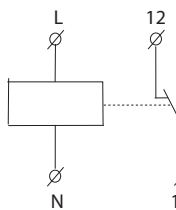


VS116B/230

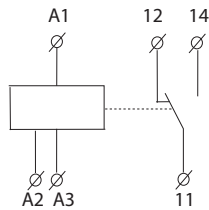


Symbol

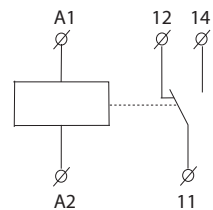
VS116B/230



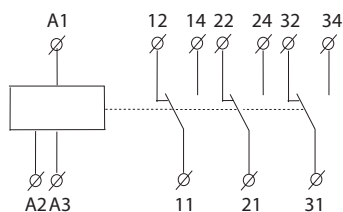
VS116K



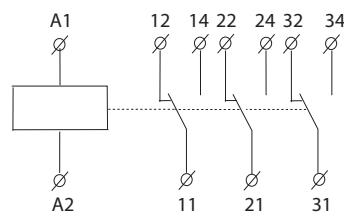
VS116U



VS308K



VS308U, VS316/24, VS316/230



EAN codes

VS116B/230	8595188147545				
VS116K/red	8595188122597	VS308K/red	8595188122696	VS316/24 red	8595188135771
VS116K/green	8595188122610	VS308K/green	8595188122719	VS316/24 green	8595188136105
VS116K/white	8595188122573	VS308K/white	8595188122672	VS316/24 white	8595188136099
VS116K/blue	8595188122603	VS308K/blue	8595188122702	VS316/24 blue	8595188136112
VS116U/red	8595188124607	VS308U/red	8595188130103	VS316/230 red	8595188135559
VS116U/green	8595188136433	VS308U/green	8595188136440	VS316/230 green	8595188136075
VS116U/white	8595188138482	VS308U/white	8595188138512	VS316/230 white	8595188136051
VS116U/blue	8595188138475	VS308U/blue	8595188138505	VS316/230 blue	8595188136068

Order code

	<b>VS116K/red:</b> 2295	<b>VS116U/red:</b> 2460	<b>VS308K/red:</b> 2269	<b>VS308U/red:</b> 3010	<b>VS316/24V red:</b> 3577	<b>VS316/230V red:</b> 4471
	<b>VS116K/green:</b> 2261	<b>VS116U/green:</b> 3643	<b>VS308K/green:</b> 2271	<b>VS308U/green:</b> 3644	<b>VS316/24V green:</b> 3610	<b>VS316/230V green:</b> 4472
	<b>VS116K/white:</b> 2257	<b>VS116U/white:</b> 3848	<b>VS308K/white:</b> 2267	<b>VS308U/white:</b> 3851	<b>VS316/24V white:</b> 3609	<b>VS316/230V white:</b> 4470
	<b>VS116K/blue:</b> 2260	<b>VS116U/blue:</b> 3847	<b>VS308K/blue:</b> 2270	<b>VS308U/blue:</b> 3850	<b>VS316/24V blue:</b> 3611	<b>VS316/230V blue:</b> 4474

Notes

Max. time of changeover of contact is 10 ms.

VS316/24 or VS316/230 enables switching of different phases or 3-phase voltage.

\* possibility to choose blue and white color of LED for power relays line VS in case of minimal order quantity 100 pcs.

## Looking for pricing, stock, or lifecycle information?

Click below to explore more details on WIN SOURCE:

- ⊖ [View VS316/24V red on WIN SOURCE](#)
- ⊖ [ELKO EP North America LLC Information](#)

## Optimize Your Supply Chain with WIN SOURCE Solutions

- ✓ Global Sourcing Solution
- ✓ Obsolete Management
- ✓ Cost Control Management
- ✓ Shortage Management
- ✓ Alternative Solution
- ✓ Excess Inventory Management