

High Pass Filter

RHP-44+

50Ω 95 to 2400 MHz

Maximum Ratings

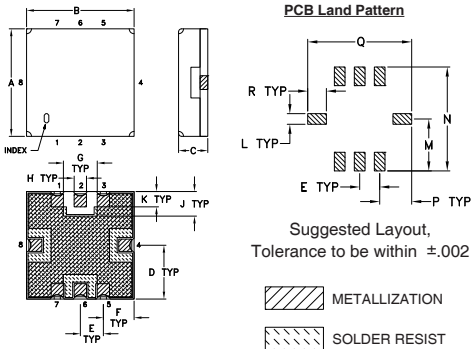
| | |
|-----------------------|----------------|
| Operating Temperature | -40°C to 85°C |
| Storage Temperature | -55°C to 100°C |
| RF Power Input | 0.5W at 25°C |

Permanent damage may occur if any of these limits are exceeded.

Pin Connections

| | |
|--------|------------------|
| INPUT | 2 |
| OUTPUT | 6 |
| GROUND | 1, 3, 4, 5, 7, 8 |

Outline Drawing

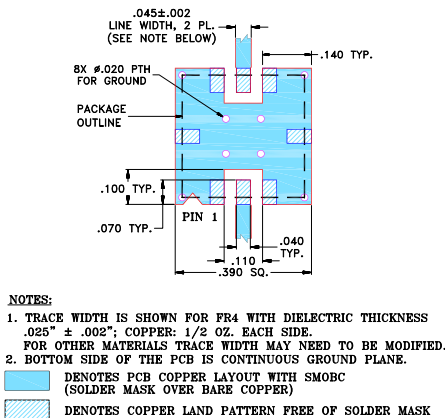


Outline Dimensions (inch/mm)

| | | | | | | | | |
|------|------|------|------|------|------|------|-------|------|
| A | B | C | D | E | F | G | H | J |
| .350 | .350 | .100 | .175 | .075 | .100 | .110 | .040 | .080 |
| 8.89 | 8.89 | 2.54 | 4.45 | 1.91 | 2.54 | 2.79 | 1.02 | 2.03 |
| K | L | M | N | P | Q | R | wt. | |
| .050 | .040 | .195 | .390 | .120 | .390 | .070 | grams | |
| 1.27 | 1.02 | 4.95 | 9.91 | 3.05 | 9.91 | 1.78 | 0.25 | |

Note: Please refer to case style drawing for details

Demo Board MCL P/N: TB-332 Suggested PCB Layout (PL-176)



Features

- low insertion loss, 0.3dB typ. @ passband
- high rejection
- shielded case
- aqueous washable

Applications

- transmitters / receivers
- sub-harmonic rejection
- military communications



Generic photo used for illustration purposes only
CASE STYLE: GP731

+RoHS Compliant

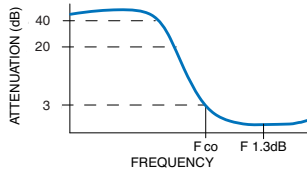
The +Suffix identifies RoHS Compliance. See our web site for RoHS Compliance methodologies and qualifications

| | |
|--|----------------------|
| Available Tape and Reel at no extra cost | |
| Reel Size | Devices/Reel |
| 7" | 10, 20, 50, 100, 200 |
| 13" | 500, 1000 |

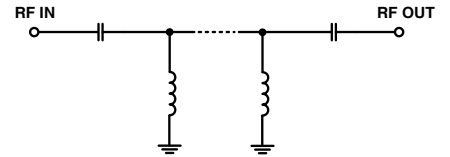
High Pass Filter Electrical Specifications (T_{AMB} = 25°C)

| STOPBAND (MHz) | f _{co} , MHz Nom. | PASSBAND (MHz) | VSWR (:1) |
|----------------|----------------------------|----------------|-----------------------------|
| (Loss > 40dB) | (Loss > 20dB) | (Loss < 3dB) | Stopband Typ. Passband Typ. |
| DC - 25 | DC - 32 | 44 | 18 1.2 |

Typical Frequency Response

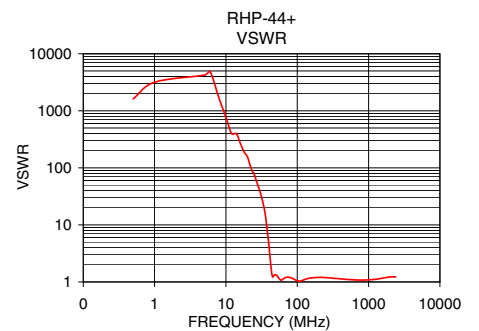
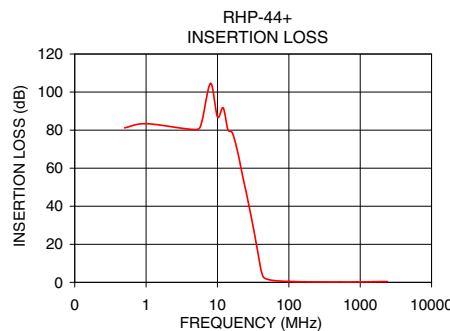


Functional Schematic



Typical Performance Data at 25°C

| Frequency (MHz) | Insertion Loss (dB) | VSWR (:1) |
|-----------------|---------------------|-----------|
| 0.5 | 81.20 | 1622.17 |
| 20.0 | 65.37 | 156.73 |
| 25.0 | 48.35 | 74.66 |
| 32.0 | 28.28 | 28.60 |
| 44.0 | 2.82 | 1.38 |
| 80.0 | 0.63 | 1.19 |
| 95.0 | 0.49 | 1.08 |
| 100.0 | 0.45 | 1.05 |
| 120.0 | 0.37 | 1.07 |
| 150.0 | 0.31 | 1.17 |
| 200.0 | 0.26 | 1.20 |
| 300.0 | 0.21 | 1.17 |
| 400.0 | 0.19 | 1.13 |
| 500.0 | 0.20 | 1.11 |
| 1000.0 | 0.23 | 1.09 |
| 1600.0 | 0.33 | 1.17 |
| 2000.0 | 0.39 | 1.22 |
| 2400.0 | 0.43 | 1.23 |




Notes

- Performance and quality attributes and conditions not expressly stated in this specification document are intended to be excluded and do not form a part of this specification document.
- Electrical specifications and performance data contained in this specification document are based on Mini-Circuits' applicable established test performance criteria and measurement instructions.
- The parts covered by this specification document are subject to Mini-Circuits standard limited warranty and terms and conditions (collectively, "Standard Terms"); Purchasers of this part are entitled to the rights and benefits contained therein. For a full statement of the Standard Terms and the exclusive rights and remedies thereunder, please visit Mini-Circuits' website at www.minicircuits.com/MCLStore/terms.jsp



Looking for pricing, stock, or lifecycle information?

Click below to explore more details on WIN SOURCE:

 [View RHP-44+ on WIN SOURCE](#)

 [Mini-Circuits Information](#)

Optimize Your Supply Chain with WIN SOURCE Solutions

-  Global Sourcing Solution
-  Obsolete Management
-  Cost Control Management
-  Shortage Management
-  Alternative Solution
-  Excess Inventory Management