

## MGA-495940-02 4.4 – 5.9 GHz 10W High Efficiency Linear Power Amplifier

### Features:

- 14 dB Gain
- 40 dBm P<sub>-3dB</sub>
- 33 dBm Linear Pout @ 2.5% EVM (802.11 64QAM)
- 25% Efficiency at 33 dBm Linear Output Power
- Fully Matched Input and Output for Easy Cascade
- + 28V Bias Voltage
- Surface Mount Package with RoHS Compliance
- MTTF > 100 years @ 85°C ambient temperature

### Applications:

- 802.16d/e WiMax
- 802.11a WLAN
- Point-To-Point Radio Applications

### Description:

The MGA-495940-02 is a power amplifier with the State-of-the-Art linear power-added-efficiency between 4.4 GHz and 5.9 GHz frequency band. Based on advanced robust GaN device technology, the power-added-efficiency of this power amplifier is as high as 25% when it outputs 2W linear burst power with 2.5% EVM under the 802.16d/e 64QAM modulation schemes. The high efficiency linear power amplifier also has excellent reliability. Ideal applications include the driver and the output power stage of WiMax and WLAN infrastructures and access points. It also can be used for PTP (Point-To-Point) radio applications for this band.

### Typical RF Performance: $V_{ds}=28V$ , $I_{cq}=80mA$ , $T_a=25\text{ }^\circ\text{C}$ , $Z_0=50\text{ ohm}$

Parameter	Units	Typical Data
Frequency Range	MHz	4400-5900
Gain (Typ / Min)	dB	14 / 10
Gain Flatness (Typ / Max)	+/- dB	1.0 / 1.5
Input Return Loss	dB	8
Output Return Loss	dB	8
Output P3dB	dBm	40
Pout @ 2.5% EVM	dBm	33
Operating Current Range	mA	100-400
Thermal Resistance	$^\circ\text{C} / \text{W}$	5

(1) Output IP3 is measured with two tones at output power of 13 dBm/tone separated by 10 MHz.

### Absolute Maximum Ratings: ( $T_a=25\text{ }^\circ\text{C}$ )\*

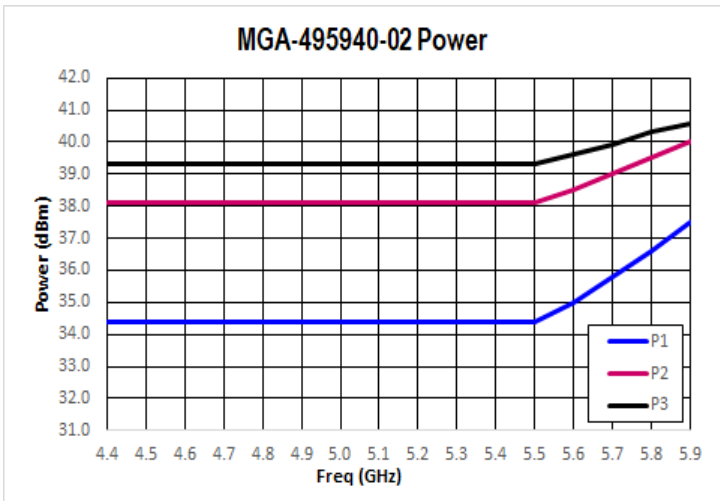
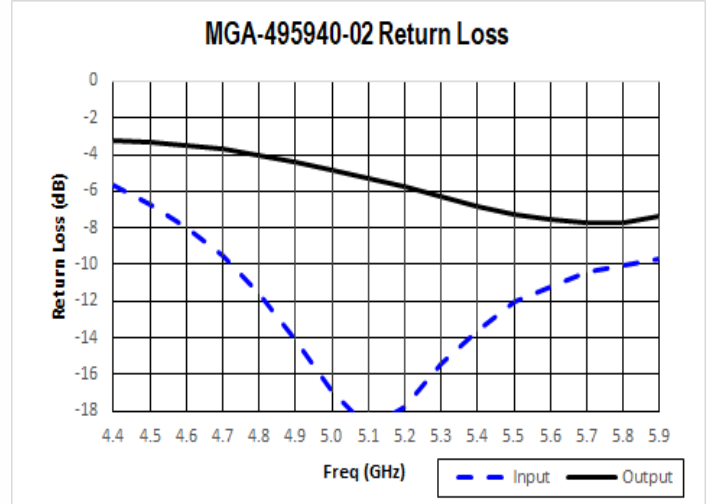
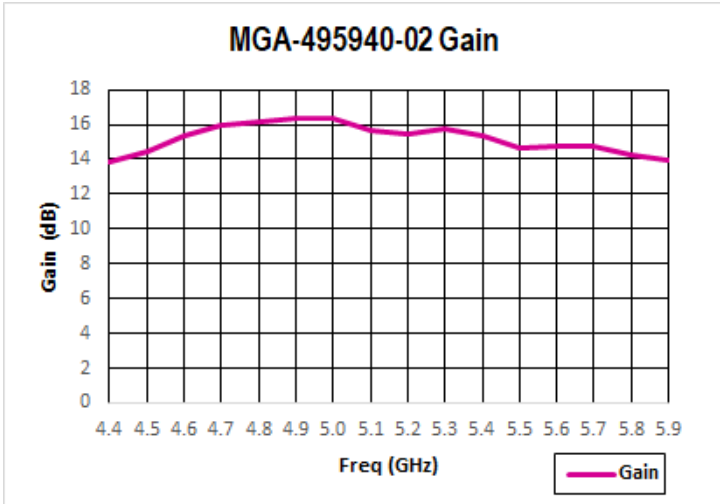
SYMBOL	PARAMETERS	UNITS	ABSOLUTE MAXIMUM
V <sub>ds</sub>	Drain-Source Voltage	V	50
I <sub>d</sub>	Drain Current	mA	1000
I <sub>g</sub>	Gate Current	mA	100
P <sub>diss</sub>	DC Power Dissipation	W	50
P <sub>in max</sub>	RF Input Power	dBm	+33
T <sub>ch</sub>	Channel Temperature	$^\circ\text{C}$	175
T <sub>stg</sub>	Storage Temperature	$^\circ\text{C}$	-55 to 150

\*Operation of this device above any one of these parameters may cause permanent damage.

# MGA-495940-02

4.4 – 5.9 GHz 10W High Efficiency Linear Power Amplifier Product Data Sheet

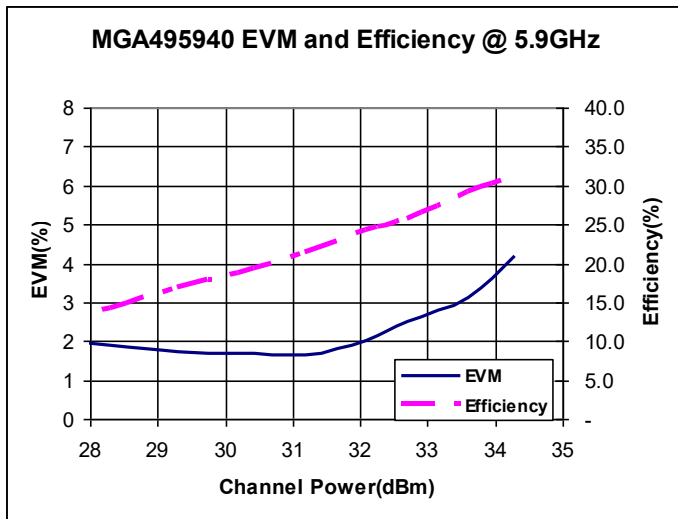
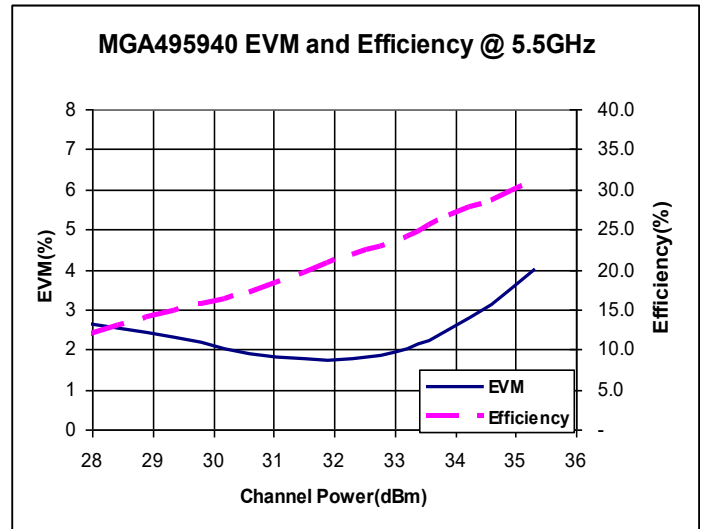
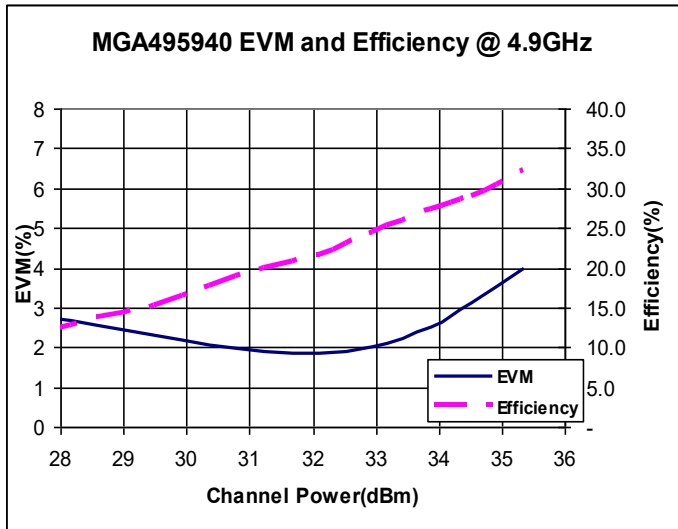
Typical RF Performance:  $V_{ds}=28.0V$ ,  $I_{cq}=80mA$ ,  $Z_0=50\text{ ohm}$ ,  $T_a=25\text{ }^\circ\text{C}$



# MGA-495940-02

4.4 – 5.9 GHz 10W High  
Efficiency Linear Power Amplifier  
Product Data Sheet

## Typical RF Performance(Cont'l): $V_{ds}=28.0V$ , $I_{cq}=80mA$ , $Z_0=50\text{ ohm}$ , $T_a=25\text{ }^\circ\text{C}$



# MGA-495940-02

4.4 – 5.9 GHz 10W High  
Efficiency Linear Power Amplifier  
Product Data Sheet

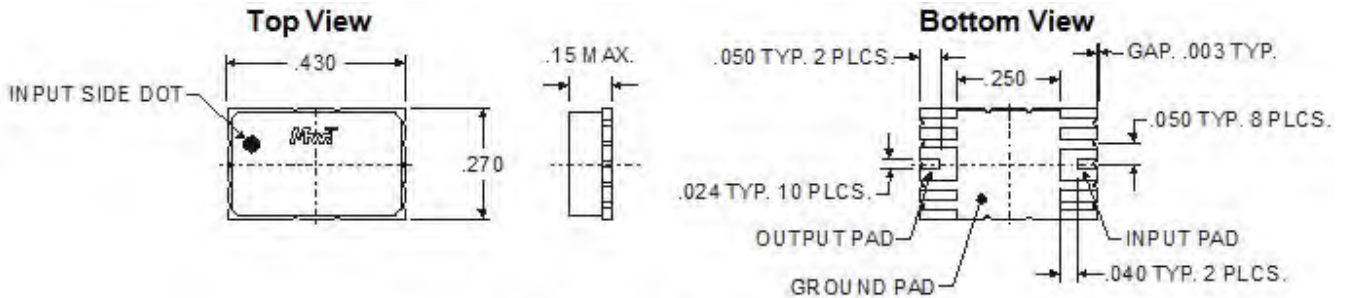
## Typical Scattering Parameters: $V_{ds}=28V$ , $I_{cq}=80mA$ , $Z_0=50\text{ ohm}$ , $T_a=25\text{ }^\circ\text{C}$

Freq (GHz)	dB(S11)	Ang(S11)	dB(S21)	Ang(S21)	dB(S12)	Ang(S12)	dB(S22)	Ang(S22)
3.00	-1.40	107.7	9.70	-24.2	-36.82	-84.6	-3.02	149.9
3.10	-1.43	104.0	9.45	-31.6	-36.75	-84.2	-2.99	146.5
3.20	-1.55	99.8	10.04	-34.2	-37.57	-88.8	-2.96	143.4
3.30	-1.59	95.4	9.97	-34.0	-37.18	-86.1	-2.92	140.0
3.40	-1.71	91.0	9.64	-38.5	-37.18	-90.2	-2.92	136.7
3.50	-1.85	85.9	10.18	-45.5	-36.27	-87.9	-2.91	133.1
3.60	-2.04	80.7	11.12	-50.2	-36.47	-87.3	-2.90	129.3
3.70	-2.24	75.1	11.94	-53.5	-35.91	-89.4	-2.91	125.5
3.80	-2.49	69.3	12.26	-56.4	-34.67	-97.1	-2.92	121.5
3.90	-2.82	63.0	12.08	-63.6	-32.84	-97.0	-2.93	117.2
1.00	-3.18	56.4	12.41	-74.4	-33.08	-103.9	-2.94	113.0
4.10	-3.59	49.4	13.13	-81.4	-31.18	-114.5	-2.97	108.4
4.20	-4.18	41.6	13.42	-86.5	-31.10	-122.3	-3.02	103.3
4.30	-4.85	32.9	13.49	-94.0	-30.28	-134.3	-3.12	98.1
4.40	-5.68	24.1	13.83	-103.1	-30.10	-144.0	-3.21	92.4
4.50	-6.71	13.8	14.49	-111.6	-30.12	-153.3	-3.35	86.2
4.60	-7.96	2.5	15.33	-119.4	-30.22	-162.3	-3.50	79.6
4.70	-9.50	-10.7	15.95	-128.3	-29.87	-168.1	-3.69	72.4
4.80	-11.54	-25.8	16.12	-140.4	-30.30	-173.8	-4.03	64.6
4.90	-14.07	-46.0	16.38	-153.6	-29.78	178.5	-4.39	56.3
5.00	-16.94	-73.0	16.36	-164.7	-29.39	172.8	-4.84	47.7
5.10	-18.97	-116.4	15.65	-176.5	-28.97	163.6	-5.28	38.4
5.20	-17.76	-159.7	15.43	169.5	-28.28	153.9	-5.73	28.6
5.30	-15.45	169.9	15.73	160.5	-28.17	145.1	-6.30	17.5
5.40	-13.63	148.1	15.38	155.0	-28.12	131.1	-6.83	5.0
5.50	-12.06	129.5	14.65	143.8	-27.83	124.6	-7.24	-8.3
5.60	-11.18	113.0	14.70	130.0	-28.76	113.2	-7.58	-22.1
5.70	-10.38	96.2	14.78	118.7	-28.35	104.0	-7.69	-36.8
5.80	-10.03	79.6	14.27	107.6	-29.12	99.2	-7.71	-51.7
5.90	-9.67	60.7	13.95	94.8	-28.90	88.3	-7.40	-66.9
6.00	-9.51	40.8	13.63	85.9	-28.53	84.1	-6.97	-81.1
6.10	-9.12	19.1	12.82	76.7	-28.38	75.2	-6.42	-94.4
6.20	-8.72	-4.0	12.43	60.7	-28.16	65.2	-5.80	-107.2
6.30	-7.99	-28.1	12.88	43.7	-28.44	48.7	-5.20	-119.3
6.40	-7.18	-51.0	12.68	29.5	-28.52	36.0	-4.67	-130.2
6.50	-6.10	-71.2	11.16	14.0	-30.40	25.9	-4.14	-139.7
6.60	-5.19	-89.6	9.25	-1.9	-31.76	11.3	-3.70	-148.7
6.70	-4.25	-106.4	6.72	-15.1	-32.64	8.9	-3.35	-157.1
6.80	-3.58	-121.0	4.30	-29.2	-34.21	7.5	-3.04	-164.8
6.90	-2.94	-134.2	3.36	-33.6	-35.34	2.6	-2.79	-171.7
7.00	-2.49	-145.6	1.77	-24.0	-35.68	5.7	-2.58	-177.8

# MGA-495940-02

4.4 – 5.9 GHz 10W High  
Efficiency Linear Power Amplifier  
Product Data Sheet

**Mechanical Information:** *This Package is RoHS compliant*



**All dimensions are in inches**

Pin Designation (Top View)			
Pin 1 (DOT Top Left)	GND	Pin 10	GND
Pin 2	GND	Pin 9	GND
Pin 3	RF In/Vg	Pin 8	RF Out/Vdd
Pin 4	GND	Pin 7	GND
Pin 5	GND	Pin 6	GND

## **Application Circuit**

The evaluation board, shown in Figure 3, is fabricated with Rogers's 4003 material, 20 mil thick, 2 oz copper weight. The MGA-495940-02 shown in the center of board is a 10 watt amplifier with high gain and high linearity. For best thermal performance, the PCB requires via holes with a diameter of 20 mils placed uniformly over the center pad for thermal relief and RF ground as shown in Figure 4. The via holes underneath the package are back filled with conductive epoxy as shown in Figure 4. The choice of capacitor bypassing near the amplifier should have a short circuit resonance at the frequency of operation. A small capacitor 3.9 pf 0603 from AVX has a series resonance at 5.5 GHz and will make a good choice for the first bypass capacitor.

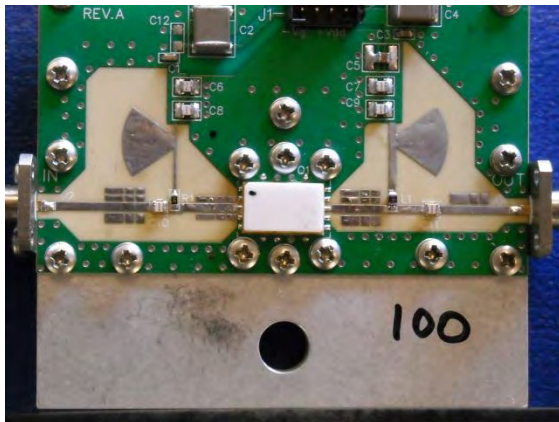


Figure 3 Evaluation board

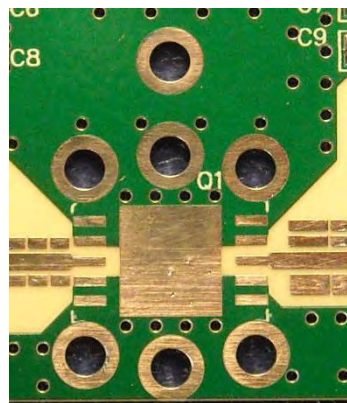


Figure 4 Hole Pattern

Followed up with larger value capacitors 100pf, 1000pf and 2.2 uF can be used to maintain voltage stability under peak current conditions. The DC ground via holes should be laid out to minimized inductive returns associated with ground loops. Use of stitch ground vias holes can help control the return current and also maintain ground continuity between the top and bottom ground layers. Biasing with quarter-wave stubs at the gate and drain are shown in Figure 3. A 56 ohm resistor is added in series to the gate bias and a 2.2 nH choke is added in series to the drain bias. The effective impedance is increased which reduces the risk of low frequency oscillations.

# MGA-495940-02

## 4.4 – 5.9 GHz 10W High Efficiency Linear Power Amplifier Product Data Sheet

### Application Notes:

**802.16 256 carriers, 64 QAM @ 4.4GHz, Pavg=33.40dBm @ EVM=2.5%**

IEEE 802.16-2004 OFDM		
Frequency: 4.4 GHz	Signal Level Setting: 17.4 dBm	Ref. Level / Ext. Att: 27.4 dBm / 18 dB
Sweep Mode: Continuous	Trigger Mode: Free Run	Trigger Offset: -10 $\mu$ s
Burst Type: OFDM DL Burst 6(6)	Modulation: 64QAM3/4	No Of Data Symbols: 1/2425

Result Summary						
No. of Bursts	6					
	Min	Mean	Limit	Max	Limit	Unit
EVM All Carriers	2.58	2.62	2.82	2.66	2.82	%
EVM Data Carriers	2.59	2.62		2.66		%
EVM Pilot Carriers	2.54	2.58		2.62		%
IQ Offset	0.02	0.03	17.78	0.05	17.78	%
Gain Imbalance	0.22	0.11		0.05		%
Quadrature Error	0.053	0.058		0.066		°
Center Frequency Error	35.87	35.91	$\pm$ 35200	35.97	$\pm$ 35200	Hz
Clock Error	-0.01	0.10	$\pm$ 8	0.33	$\pm$ 8	ppm
Burst Power	34.96	35.01		35.05		dBm
Crest Factor	9.26	9.33		9.40		dB
RSSI	37.98	37.98		37.98		dBm
RSSI Standard Deviation		-3.37				dB
CINR	15.70	15.70		15.74		dB
CINR Standard Deviation		16.85				dB

# MGA-495940-02

## 4.4 – 5.9 GHz 10W High Efficiency Linear Power Amplifier Product Data Sheet

### Application Notes:

**802.16 256 carriers, 64 QAM @ 4.4GHz, Pavg=33.40dBm @ EVM=2.5%**

IEEE 802.16-2004 OFDM		
Frequency: 4.9 GHz	Signal Level Setting: 16.1 dBm	Ref. Level / Ext. Att: 26.1 dBm / 17.9 dB
Sweep Mode: Continuous	Trigger Mode: External	Trigger Offset: -10 $\mu$ s
Burst Type: OFDM DL Burst	Modulation: ALL	No Of Data Symbols: 1/2425

Result Summary						
No. of Bursts	4					
	Min	Mean	Limit	Max	Limit	Unit
EVM All Carriers	2.45	2.48	2.82	2.55	2.82	%
EVM Data Carriers	2.46	2.48		2.55		%
EVM Pilot Carriers	2.34	2.41		2.54		%
IQ Offset	0.34	0.34	17.78	0.34	17.78	%
Gain Imbalance	0.12	0.12		0.12		%
Quadrature Error	0.013	0.013		0.013		°
Center Frequency Error	149.15	149.15	$\pm 39200$	149.15	$\pm 39200$	Hz
Clock Error	0.03	0.03	$\pm 8$	0.03	$\pm 8$	ppm
Burst Power	33.37	33.40		33.43		dBm
Crest Factor	9.15	9.18		9.21		dB
RSSI	36.31	36.31		36.31		dBm
RSSI Standard Deviation		- 3.06				dB
CINR	15.98	15.98		15.98		dB
CINR Standard Deviation		2.75				dB

# MGA-495940-02

## 4.4 – 5.9 GHz 10W High Efficiency Linear Power Amplifier Product Data Sheet

### Application Notes(Con't):

**802.16 256 carriers, 64 QAM @ 5.5GHz, Pavg=33.54dBm @ EVM=2.5%**

IEEE 802.16-2004 OFDM		
Frequency: 5.5 GHz	Signal Level Setting: 16.7 dBm	Ref. Level / Ext. Att: 26.7 dBm / 17.9 dB
Sweep Mode: Continuous	Trigger Mode: External	Trigger Offset: -10 $\mu$ s
Burst Type: OFDM DL Burst	Modulation: ALL	No Of Data Symbols: 1/2425

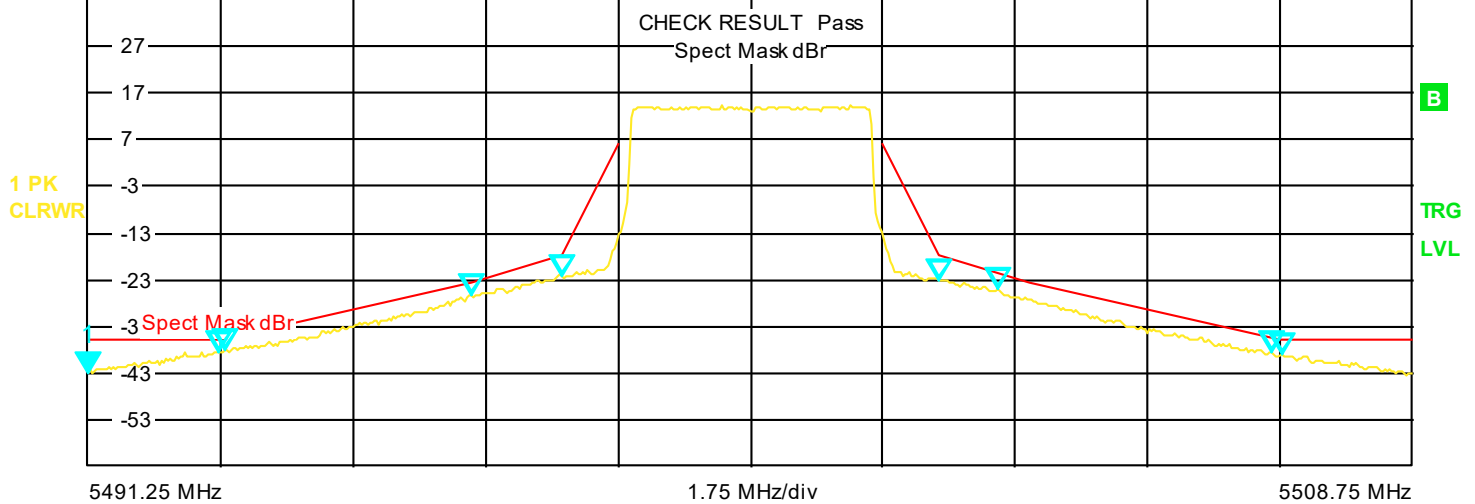
Result Summary						
No. of Bursts	4					
	Min	Mean	Limit	Max	Limit	Unit
EVM All Carriers	2.47	2.50	2.82	2.54	2.82	%
EVM Data Carriers	2.48	2.50		2.54		%
EVM Pilot Carriers	2.38	2.45		2.56		%
IQ Offset	0.21	0.21	17.78	0.21	17.78	%
Gain Imbalance	0.14	0.14		0.14		%
Quadrature Error	- 0.017	- 0.017		- 0.017		$^{\circ}$
Center Frequency Error	166.88	166.88	$\pm$ 44000	166.88	$\pm$ 44000	Hz
Clock Error	0.02	0.02	$\pm$ 8	0.02	$\pm$ 8	ppm
Burst Power	33.50	33.54		33.57		dBm
Crest Factor	9.12	9.25		9.30		dB
RSSI	36.45	36.45		36.45		dBm
RSSI Standard Deviation		- 5.47				dB
CINR	15.94	15.94		15.94		dB
CINR Standard Deviation		2.20				dB

# MGA-495940-02

## 4.4 – 5.9 GHz 10W High Efficiency Linear Power Amplifier Product Data Sheet

IEEE 802.16-2004 OFDM							
Frequency: 5.5 GHz		Signal Level Setting: 18 dBm		Ref. Level / Ext. Att: 19.5 dBm / 17.9 dB			
Sweep Mode: Continuous		Trigger Mode: External		Trigger Offset: -10 $\mu$ s			
Burst Type: OFDM DL Burst		Modulation: ALL		No Of Data Symbols: 1/2425			
Spectrum Emission Mask							
Tx Channel:		Bandwidth 3.5 MHz		Power 14.26 dBm			
Start Freq. Rel.	Stop Freq. Rel.	RBW	Freq. at $\Delta$ to Limit	Pwr Abs	Pwr Rel	$\Delta$ to Limit	
-8.750 MHz	-7.000 MHz	30 kHz	5.492988782 GHz	-38.54 dBm	-52.79 dB	-2.79 dB	
-7.000 MHz	-3.700 MHz	30 kHz	5.493044872 GHz	-38.05 dBm	-52.30 dB	-2.46 dB	
-3.700 MHz	-2.500 MHz	30 kHz	5.496326122 GHz	-26.39 dBm	-40.65 dB	-2.78 dB	
-2.500 MHz	-1.750 MHz	30 kHz	5.497504007 GHz	-22.05 dBm	-36.31 dB	-4.44 dB	
1.750 MHz	2.500 MHz	30 kHz	5.502495994 GHz	-23.01 dBm	-37.27 dB	-5.39 dB	
2.500 MHz	3.700 MHz	30 kHz	5.503281250 GHz	-25.19 dBm	-39.44 dB	-3.53 dB	
3.700 MHz	7.000 MHz	30 kHz	5.506899039 GHz	-38.57 dBm	-52.83 dB	-3.20 dB	
7.000 MHz	8.750 MHz	30 kHz	5.507011218 GHz	-38.94 dBm	-53.20 dB	-3.20 dB	

SpectrumMASK ETSI RBW 30 kHz Marker 1 -42.87 dBm  
 VBW 100 Hz 5.49125 GHz  
 Ref 19.5 dBm Att/EL 30.00 / 0.00 dB SWT 5.7 s Sweep 1 of 1





# **MGA-495940-02**

**4.4 – 5.9 GHz 10W High  
Efficiency Linear Power Amplifier  
Product Data Sheet**

## **Contact Information**

For additional information please visit [www.cmlmicro.com](http://www.cmlmicro.com) or contact a sales office.

<b>Europe</b>	<b>America</b>	<b>Asia</b>
<ul style="list-style-type: none"><li>• Maldon, UK</li><li>• Tel +44 (0) 1621 875500</li><li>• <a href="mailto:sales@cmlmicro.com">sales@cmlmicro.com</a></li></ul>	<ul style="list-style-type: none"><li>• Winston-Salem, NC</li><li>• Tel +1 336 744 5050</li><li>• <a href="mailto:us.sales@cmlmicro.com">us.sales@cmlmicro.com</a></li></ul>	<ul style="list-style-type: none"><li>• Singapore</li><li>• Tel +65 6288129</li><li>• <a href="mailto:sg.sales@cmlmicro.com">sg.sales@cmlmicro.com</a></li></ul>

Although the information contained in this document is believed to be accurate, no responsibility is assumed by CML for its use. The product and product information is subject to change at any time without notice. CML has a policy of testing every product shipped using calibrated test equipment to ensure compliance with product specification.

© 2022 CML Microsystems Plc

## Looking for pricing, stock, or lifecycle information?

Click below to explore more details on WIN SOURCE:

 [View MGA-495940-02](#) on WIN SOURCE

 [CML Microcircuits](#) Information

## Optimize Your Supply Chain with WIN SOURCE Solutions

-  Global Sourcing Solution
-  Obsolete Management
-  Cost Control Management
-  Shortage Management
-  Alternative Solution
-  Excess Inventory Management