



CERAMIC

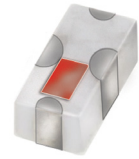
# Low Pass Filter

## LFCW-1292+

50Ω DC to 12900 MHz

### THE BIG DEAL

- Low loss, 1.3 dB typ.
- Good rejection 45 dB typ.
- Small size 0603 (0.063" x 0.032" x 0.024")



Generic photo used for illustration purposes only

CASE STYLE: JC0603C-1

#### +RoHS Compliant

The +Suffix identifies RoHS Compliance. See our web site for RoHS Compliance methodologies and qualifications

### APPLICATIONS

- Test & Measurement
- 5G MIMO
- EW, Radar and ECM Defense Systems
- Satellite Communications

### PRODUCT OVERVIEW

Mini-Circuits' LFCW-1292+ is an LTCC low pass filter with a passband from DC to 12900 MHz, supporting a variety of applications. This model provides 1.3 dB typ. passband insertion loss and provides a very good stopband rejection due to strategically constructed layout with minimal interaction between components. It handles up to 2.5W RF input power and provides a wide operating temperature range from -55 to +125°C. Housed in a small 0603 ceramic form factor, the filter is ideal for dense PCB layouts and with minimal performance variation due to parasitics.

### KEY FEATURES

Feature	Advantages
Ultra-wide stopband	The LTCC lowpass filter provides a very good stopband rejection until 26.5 GHz suitable for high end applications.
LTCC Construction	Provides repeatable performance in a rugged, ceramic package well suited for tough environments such as high humidity and temperature extremes.
Small size ( 0.063" x 0.032" x 0.024")	Saves space in dense circuit board layouts and minimizes the effects of parasitics.
Good power handling, 2.5W	Supports a wide range of system power requirements.

REV. OR  
ECO-014772  
LFCW-1292+  
EDU4325  
URJ  
220830





CERAMIC

# Low Pass Filter

## LFCW-1292+

### ELECTRICAL SPECIFICATIONS<sup>1,2</sup> AT 25°C

Parameter	F#	Frequency (MHz)	Min.	Typ.	Max.	Units	
Passband	Insertion Loss	DC-F1	DC - 12900	—	1.3	2.2	dB
	Freq. Cut-Off	F2*	13900	—	3	—	dB
	Return Loss	DC-F1	DC - 12900	—	13	—	dB
Stop Band	Rejection Loss	F3-F4	17000 - 19500	20	45	—	dB
		F4-F5	19500 - 22900	25	36	—	dB
		F5-F6	22900 - 25000	20	33	—	dB
		F6-F7	25000 - 26500	—	25	—	dB

<sup>1</sup> DC de-coupling capacitors are required in Applications where DC voltage and/or current is present at either input or output ports. Please contact Mini-Circuits for alternatives if DC pass from IN-OUT is required.

<sup>2</sup> Measured on Mini-Circuits Characterization Test Board TB-LFCW-1292+

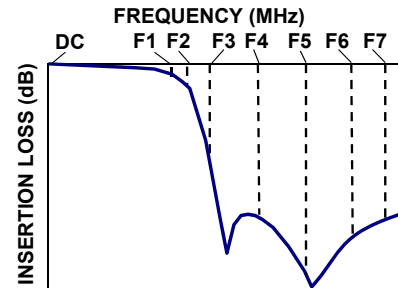
\* Typically, a ±5% frequency deviation from the stated value may occur on a unit-to-unit basis.

### MAXIMUM RATINGS

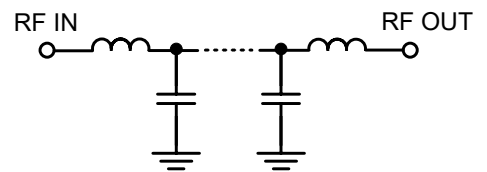
Parameter	Ratings
Operating temperature	-55°C to 125°C
Storage temperature	-55°C to 125°C
RF Power Input*	2.5W @25°C

\*Passband rating, derate linearly to 0.7W at 125°C ambient  
Permanent damage may occur if any of these limits are exceeded.

### TYPICAL FREQUENCY RESPONSE



### FUNCTIONAL SCHEMATIC





CERAMIC

# Low Pass Filter

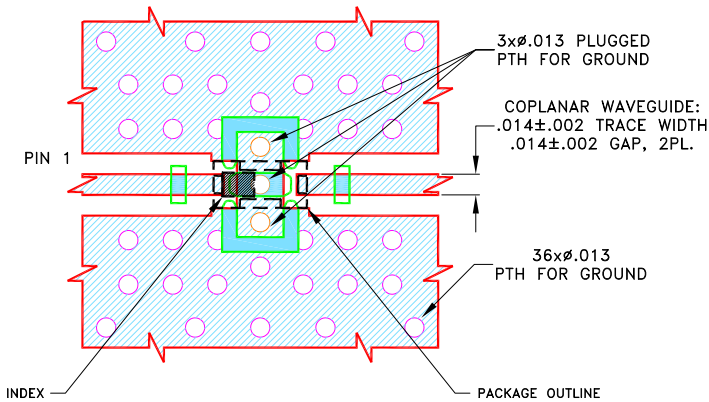
## LFCW-1292+

### PAD CONNECTIONS

INPUT	1
OUTPUT	3
GROUND	2, 4

PRODUCT MARKING: 9

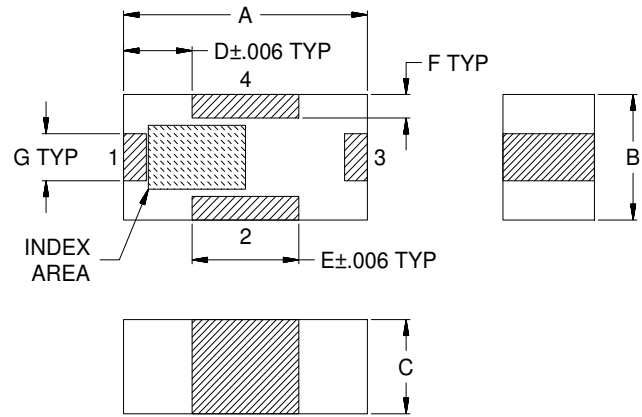
### DEMO BOARD MCL P/N: TB-LFCW-1292+ SUGGESTED PCB LAYOUT (PL-661)



NOTES:

1. COPLANAR WAVEGUIDE PARAMETERS ARE SHOWN FOR ROGERS (R04350B) WITH DIELECTRIC THICKNESS .0066±.0007. COPPER: 1/2 Oz. EACH SIDE. FOR OTHER MATERIALS TRACE WIDTH AND GAP MAY NEED TO BE MODIFIED.
  2. BOTTOM SIDE OF THE PCB IS CONTINUOUS GROUND PLANE.
- DENOTES PCB COPPER PATTERN WITH SMOBC (SOLDER MASK OVER BARE COPPER)  
 DENOTES PCB COPPER PATTERN FREE OF SOLDERMASK

### OUTLINE DRAWING



### OUTLINE DIMENSIONS (Inches) mm

A	B	C	D	E	F	G	Wt.
.063	.032	.024	.018	.028	.006	.012	grams
1.60	0.80	0.60	0.45	0.70	0.15	0.30	.005

Note: Please refer to case style drawing for details



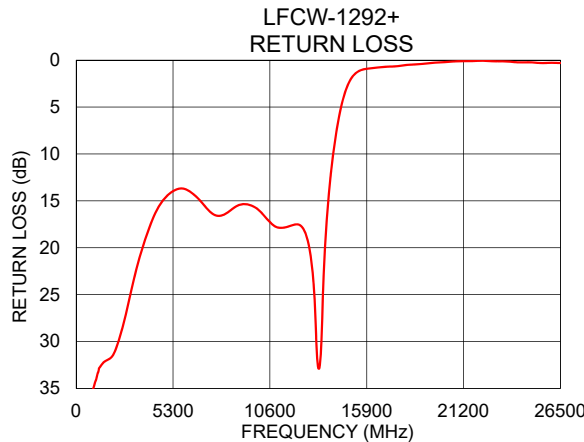
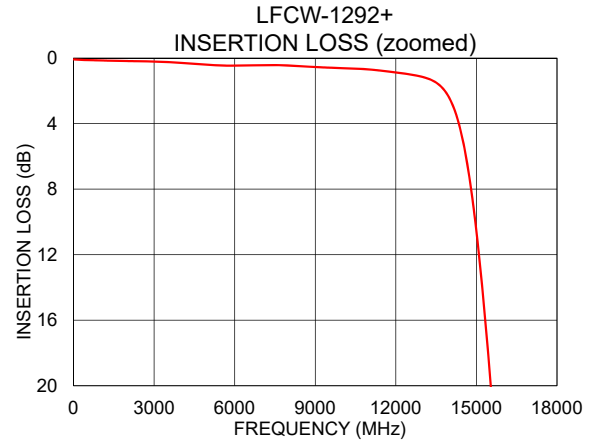
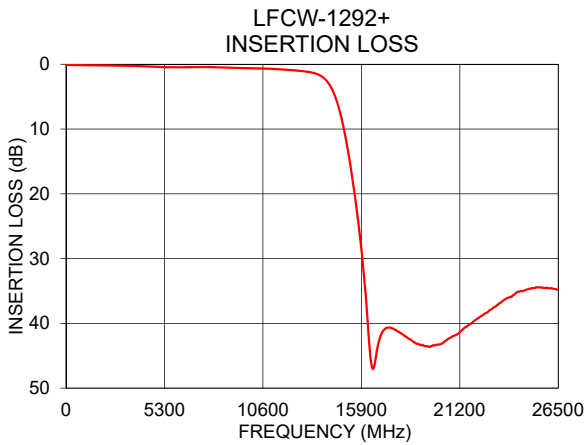
CERAMIC

# Low Pass Filter

# LFCW-1292+

### TYPICAL PERFORMANCE DATA AT 25°C

Frequency (MHz)	Insertion Loss (dB)	Return Loss (dB)
10	0.08	48.69
100	0.10	44.02
2000	0.19	31.50
5000	0.41	14.42
10000	0.62	16.01
12900	1.12	21.92
13900	2.18	12.80
14200	3.23	8.13
15550	20.34	1.09
16000	31.38	0.90
17000	41.50	0.70
19500	43.56	0.29
22900	37.82	0.13
25000	34.67	0.25
26500	34.84	0.30



- NOTES**
- A. Performance and quality attributes and conditions not expressly stated in this specification document are intended to be excluded and do not form a part of this specification document.
  - B. Electrical specifications and performance data contained in this specification document are based on Mini-Circuit's applicable established test performance criteria and measurement instructions.
  - C. The parts covered by this specification document are subject to Mini-Circuits standard limited warranty and terms and conditions (collectively, "Standard Terms"); Purchasers of this part are entitled to the rights and benefits contained therein. For a full statement of the standard. Terms and the exclusive rights and remedies thereunder, please visit Mini-Circuits' website at [www.minicircuits.com/MCLStore/terms.jsp](http://www.minicircuits.com/MCLStore/terms.jsp)



## Looking for pricing, stock, or lifecycle information?

Click below to explore more details on WIN SOURCE:

 [View LFCW-1292+](#) on WIN SOURCE

 [Mini-Circuits](#) Information

## Optimize Your Supply Chain with WIN SOURCE Solutions

-  Global Sourcing Solution
-  Obsolete Management
-  Cost Control Management
-  Shortage Management
-  Alternative Solution
-  Excess Inventory Management