



**Part Number :** [5031492800](#)

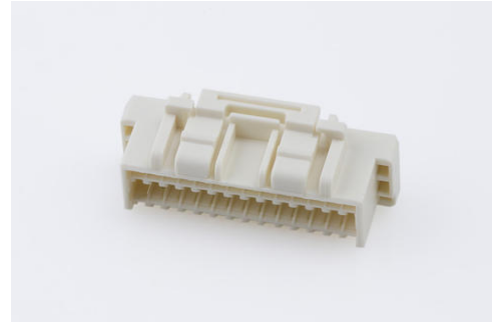
**Product Description :** CLIK-Mate Plug Housing, 1.50mm Pitch, Dual Row, Positive Lock, 28 Circuits, Natural

**Series Number :** 503149

**Status :** Active

**Product Category :** Connector Housings

---



## Documents and Resources

### Drawings

[5031492800\\_sd.pdf](#)

### 3D Models and Design Files

[STEP AP242](#)

[SOLIDWORKS](#)

[Creo](#)

[5031492800.dxf](#)

### Specifications

[AS-503149-001-001.pdf](#)

[SPK-503149-001-001.pdf](#)

[5031490000-PS-000.pdf](#)

[5031491000-PS-000.pdf](#)

[5031491001-PS-000.pdf](#)

[5031491002-PS-000.pdf](#)

[5031491003-PS-000.pdf](#)

[PS-505406-001-001.pdf](#)

[5031490001-PS-000.pdf](#)

[5031490002-PS-000.pdf](#)


[5031491004-PS-000.pdf](#)

---

## Product Environment Compliance

### Compliance

GADSL/IMDS	Not Relevant
------------	--------------

China RoHS	 per SJ/T 11365-2006
EU ELV	Not Relevant
Low-Halogen Status	Not Low-Halogen per IEC 61249-2-21
REACH SVHC	Not Contained per D(2025)7771-DC (04 Feb 2026)
EU RoHS	Compliant per EU 2015/863

### Compliance Statements

- EU RoHS
- REACH SVHC
- Low-Halogen

### Industry Documents

- IPC 1752A Class C
- IPC 1752A Class D
- Molex Product Compliance Declaration
- IEC-62474
- chemSHERPA (xml)

### Substances of Interest

- PFAS

### EU RoHS Certificate of Compliance

### Additional Product Compliance Information

## Part Details

### General

Status	Active
Category	Connector Housings
Series	503149
Description	CLIK-Mate Plug Housing, 1.50mm Pitch, Dual Row, Positive Lock, 28 Circuits, Natural
Application	Signal, Wire-to-Board
Product Name	CLIK-Mate
UPC	883906271633

### Agency

UL	E29179
----	--------

## Physical

Circuits (maximum)	28
Color - Resin	Natural
Flammability	94HB
Gender	Plug
Glow-Wire Capable	No
Keying to Mating Part	None
Lock to Mating Part	Yes
Material - Resin	PBT
Number of Rows	2
Packaging Type	Bag
Panel Mount	No
Pitch - Mating Interface	1.50mm
Pitch - Termination Interface	1.50mm
Polarized to Mating Part	Yes
Stackable	No
Temperature Range - Operating	-40° to +105°C

---

## Mates With / Use With

### Mates with Part(s)

Description	Part Number
1.50mm Pitch CLIK-Mate Right-Angle Dual Row PCB Receptacles	<a href="#"><u>213228</u></a>
1.50mm Pitch CLIK-Mate Right-Angle Dual Row PCB Receptacles	<a href="#"><u>503148</u></a>
1.50mm Pitch CLIK-Mate Vertical Dual Row PCB Receptacles	<a href="#"><u>213227</u></a>
1.50mm Pitch CLIK-Mate Right-Angle Dual Row PCB Receptacles	<a href="#"><u>503154</u></a>



### Use with Part(s)

Description	Part Number
Pre-Crimped Lead CLIK-Mate 1.50mm Male-to-CLIK-Mate 1.50mm Male, Tin (Sn) Plating,	<a href="#"><u>797581011</u></a>

300.00mm Length, 24 AWG, Black	
1.50mm Pitch CLIK-Mate Male Crimp Terminals	<u>502579</u>
1.50mm Pitch CLIK-Mate Male Crimp Terminals	<u>503429</u>
CLIK-Mate 1.50mm Pitch Male Crimp Terminals	<u>213028</u>
CLIK-Mate 1.50mm Pitch Male Crimp Terminals	<u>213029</u>
Pre-Crimped Lead Clik-Mate Male-to-Clik-Mate Male	<u>215710</u>
Pre-Crimped Lead Clik-Mate Male-to-Pigtail	<u>215711</u>

## Looking for pricing, stock, or lifecycle information?

Click below to explore more details on WIN SOURCE:

-  [View 503149-2800 on WIN SOURCE](#)
-  [Molex, LLC Information](#)

## Optimize Your Supply Chain with WIN SOURCE Solutions

-  Global Sourcing Solution
-  Obsolete Management
-  Cost Control Management
-  Shortage Management
-  Alternative Solution
-  Excess Inventory Management