



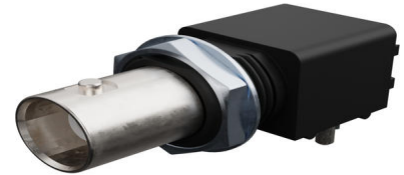
Part Number : [731375003](#)

Product Description : BNC Jack, Right-Angle, Bulkhead Receptacle, PCB, Through Hole, Panel Isolated, Black PBT Housing, Housing Height 13.20mm, Nut and Lockwasher Included, 50 Ohms

Series Number : 73171

Status : Active

Product Category : RF / Coaxial Connectors



Documents and Resources

Drawings

[731375003 sd.pdf](#)

3D Models and Design Files

[STEP AP242](#)


[SOLIDWORKS](#)

[Creo](#)

[Symbol and Footprint \(Multi-Format\)](#)

Product Environment Compliance

Compliance

GADSL/IMDS	Not Relevant
China RoHS	 per SJ/T 11365-2006
EU ELV	Not Relevant
Low-Halogen Status	Low-Halogen per IEC 61249-2-21
REACH SVHC	Contains Lead per D(2025)6375-DC (05 Nov 2025)
EU RoHS	Compliant with Exemption 6(c) per EU 2015/863

Compliance Statements

- EU RoHS
- REACH SVHC
- Low-Halogen

Industry Documents

- IPC 1752A Class C
- IPC 1752A Class D
- Molex Product Compliance Declaration
- IEC-62474
- chemSHERPA (xml)

Substances of Interest

- PFAS

EU RoHS Certificate of Compliance

Additional Product Compliance Information

Part Details

General

Status	Active
Category	RF / Coaxial Connectors
Series	73171
Description	BNC Jack, Right-Angle, Bulkhead Receptacle, PCB, Through Hole, Panel Isolated, Black PBT Housing, Housing Height 13.20mm, Nut and Lockwasher Included, 50 Ohms
Application	RF
Comments	13.20mm Profile
Product Name	BNC
Style	PCB
Type	Miniature
UPC	800753750258

Agency

CSA	LR19980
UL	E107635

Electrical

Frequency	2 GHz
Impedance	50Ω
Power / Voltage	VOLTAGE: 500 Vrms@Sea Level

Physical



Cable Attachment	N/A
Flammability	94V-0
Gender	Jack
Keying to Mating Part	N/A
Net Weight	15.347/g
Orientation	Right Angle
Packaging Type	Tray
Panel Mount	Yes
Panel Mount Method	Bulkhead
PCB Mounting	Through Hole
PCB Thickness - Recommended	3.20mm
Reverse Polar	No
Wire/Cable Type	N/A

Solder Process Data

Max-Duration	10
Lead-Free Process Capability	WAVE
Max-Cycle	1
Max-Temp	245

Looking for pricing, stock, or lifecycle information?

Click below to explore more details on WIN SOURCE:

-  [View 73137-5003 on WIN SOURCE](#)
-  [Molex, LLC Information](#)

Optimize Your Supply Chain with WIN SOURCE Solutions

-  Global Sourcing Solution
-  Obsolete Management
-  Cost Control Management
-  Shortage Management
-  Alternative Solution
-  Excess Inventory Management