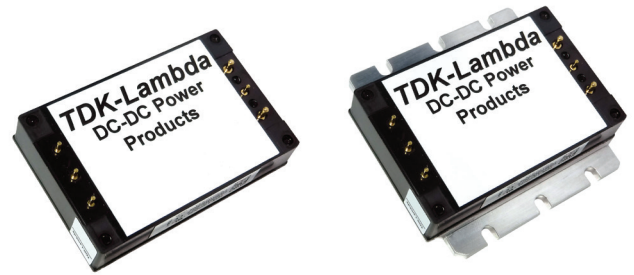


MIL-COTS 20A, 40Vdc Passive EMC Filters

<https://product.tdk.com/en/power/fqa>
www.emea.lambda.tdk.com/fqa



COTS



The FQA filter modules have been designed to reduce differential and common mode conducted emissions from dc-dc switching converters. The series takes advantage of TDK technologies to simplify system level compliance to MILSTD-461. The encapsulated rugged package design and a choice of baseplate options make the FQA modules suitable for use in a wide variety of harsh and demanding environments, including MIL-COTS.

Features	Benefits
• Filtering for Compliance to MIL-STD-461G	• Simplifies the system EMC filter
• Input Spike suppression per MIL-STD-1275D and RTCA/DO-160G	• Suitable for vehicle and airborne use
• High Differential and Common Mode Noise Attenuation	• Reduces system EMI
• -55 to 115°C Temperature Range (M-Grade)	• For operation in harsh environments
• Standard (S-Grade) or Enhanced Screening (M-Grade) Options	• Reduces cost for COTS applications
• Quarter Brick Size	• Industry standard mounting and heatsinks

Model Selector						
Model	Input Voltage (Vdc)	Maximum Current (A)	Flanged Baseplate	Non-Flanged Baseplate	Standard Screening (-S)	Enhanced Screening (-M)
FQA020ADC-007-S	-40 to +40	20	X		X	
FQA020ADC-N07-S	-40 to +40	20		X	X	
FQA020ADC-007-M	-40 to +40	20	X			X
FQA020ADC-N07-M	-40 to +40	20		X		X

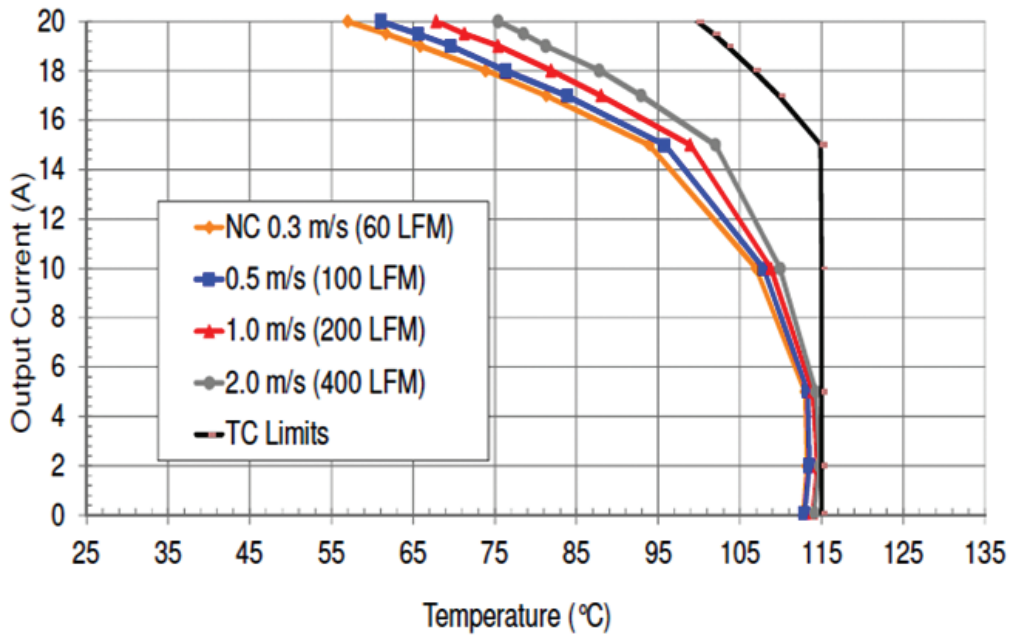
Screening Options		
Operation	S-Grade (Standard Screening)	M-Grade (Enhanced Screening)
Functional Test	Room and Hot Test	Cold, Room, and Hot Test
Burn in	Yes	Extended, 96 hour
Temperature Cycling	No	10 Cycles
Hi-Pot	2250VDC	2250VDC
Visual Inspection	Yes	Yes

Evaluation Kit		
Type	Part Number	Description
Evaluation Kit	FQX-HQA-EVK-D0	Evaluation board for FQA or FQB filter plus two (2) HQA DC-DC quarter brick modules. Filter and DC-DC modules are not included.

Specifications			
Model		FQA	
Input/Output			
Input Voltage Range	Vdc	-40 to +40	
Input Current (max)	A	20	
DC Resistance (typical)	mΩ	Positive Leg: 7.5, Negative Leg: 5	
Power Loss	W	5 @ 20 A	
Differential Mode Attenuation at 300 kHz	dB	50 (50 Ω source & load impedance)	
Common Mode Attenuation at 30 MHz	dB	50 (50 Ω source & load impedance)	
Qualification Methods	-	Consistent with MIL-STD-883F and MIL-STD-202G	
Compliance Matrix (Tested with FQX-HQA-EVK-D0 evaluation board: FQA filter + 2X HQA DC-DC Converter, 200W resistive load)	Radiated Emmissions	RE101	Navy
	Radiated Emmissions	RE102	10kHz to 18GHz Fixed Wing internal, >25m Nose to Tail
	Conducted Emissions	CE101	Surface ships and submarines
	Conducted Emissions	CE102	Basic Curve
	Conducted Susceptibility	CS101	Curve 2, I _{max} =10A
	Conducted Susceptibility	CS114	Curve 5
	Conducted Susceptibility	CS115	Basic Test Signal
	Conducted Susceptibility	CS116	10kHz to 100MHz
Safety Agency Certifications	-	IEC/UL/CSA/EN62368-1, 60950-1, CE Mark	
Environmental			
Operating Baseplate Temperature	°C	Standard screening (-S): -40 to 115; Enhanced screening (-M): -55 to 115	
Storage Temperature	°C	-65 to 125	
Operating Humidity (non condensing)	%RH	MIL-STD-883 Method 1004.7	
Cooling	-	Conduction, convection or forced air	
Withstand Voltage (1 minute)	Vdc	2250 (Terminals to Case)	
Vibration	-	MIL-STD-202G, Method 201A	
Shock	-	MIL-STD-202G, Method 213B, Table 213-1, Test Condition I	
Altitude	ft	70,000, MIL-STD-810G Method 500.5 Procedure I, II, III	
Other			
Weight (Typ)	g	100	
Size (LxWxH)	mm	Flanged version (-007-x): 60.6 x 55.9 x 12.7, Non-flanged version (-N07-x): 60.6 x 39.5 x 12.7	
Size (LxWxH)	Inches	Flanged version (-007-x): 2.39 x 2.20 x 0.50, Non-flanged version (-N07-x): 2.39 x 1.56 x 0.50	
MTBF - Telcordia SR-332	Hrs	15 M @ 50 °C ambient; full load	
Warranty	yrs	3	

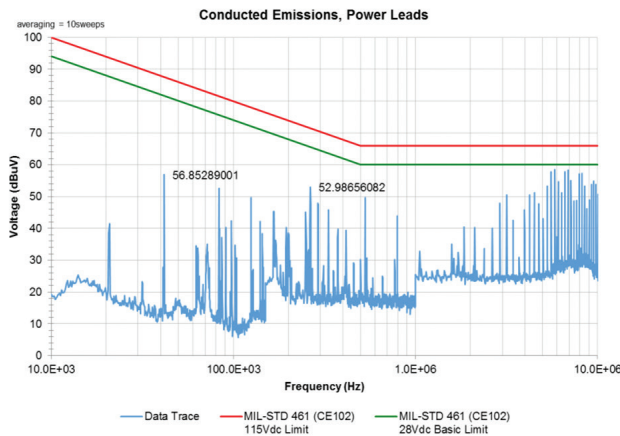
Notes
 See website for detailed [specifications](#)
 1. See thermal performance section

Thermal Performance

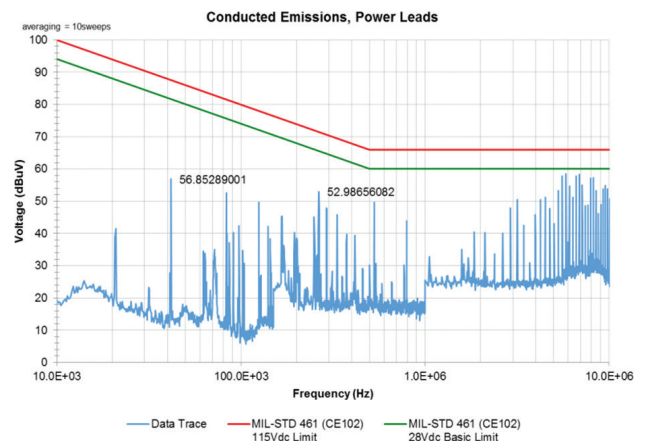


Maximum output current vs. ambient temperature at nominal input voltage for natural convection (60 LFM) to 400 LFM with airflow from pin 1 to pin 3.

Attenuation Characteristics



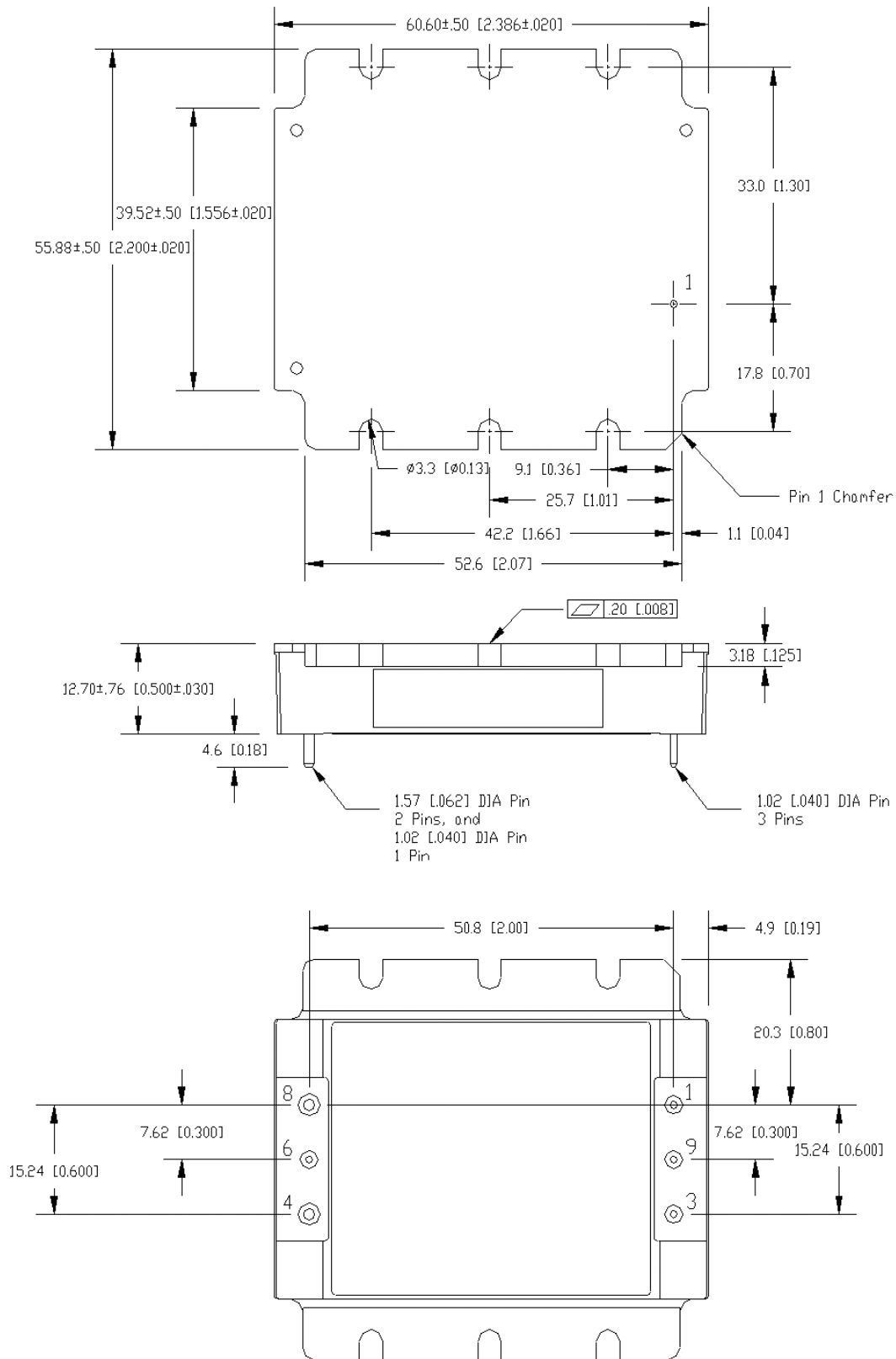
HQA2W120W280V-007-S typical conducted emissions with FQA filter module and 0.01uF common mode capacitors.



HQA2W120W120V-007-S typical conducted emissions with FQA filter module and 0.01uF common mode capacitors.

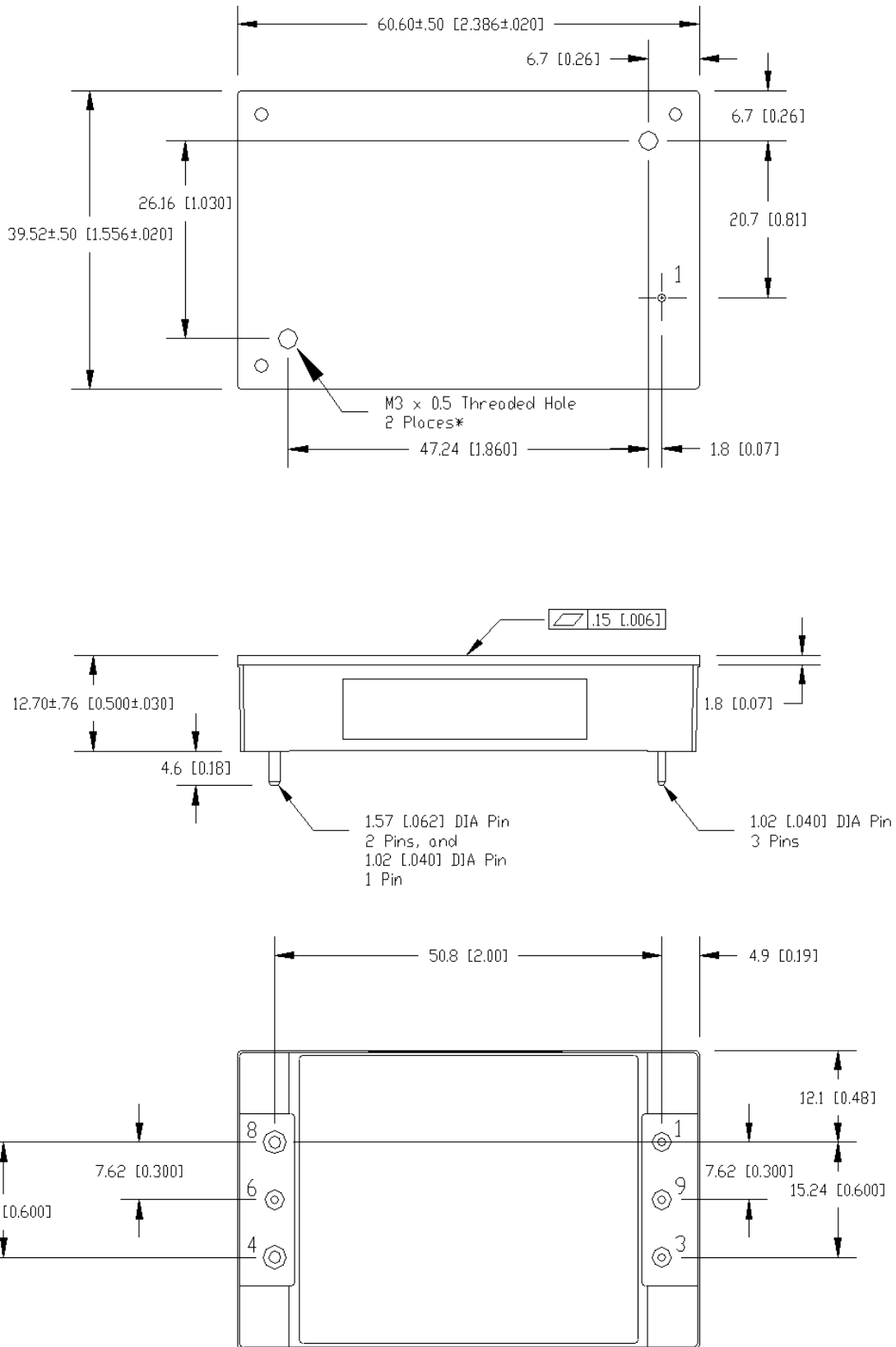
Outline Drawing

007 option (flange baseplate)



Outline Drawing

N07 option (non flange baseplate)



Pinout	
PIN	Function
1	VIN (+)
2	Not populated
3	VIN (-)
4	VOUT (-)
5	Not populated
6	Common mode out*
7	Not populated
8	VOUT (+)
9	Common mode in*

* In a typical application pin 6 would be connected to the Vout-/ground plane and pin 9 to chassis/ground for EMI measurement

Pin base material is Tellurium Copper with gold over nickel plating.



TDK-Lambda France SAS

Tel: +33 1 60 12 71 65
tif.fr-powersolutions@tdk.com
www.emea.lambda.tdk.com/fr



TDK-Lambda Americas

Tel: +1 800-LAMBDA-4 or 1-800-526-2324
tia.powersolutions@tdk.com
www.us.lambda.tdk.com



Italy Sales Office

Tel: +39 02 61 29 38 63
tif.it-powersolutions@tdk.com
www.emea.lambda.tdk.com/it



TDK Electronics do Brasil Ltda

Tel: +55 11 3289-9599
sales.br@tdk-electronics.tdk.com
www.tdk-electronics.tdk.com/en



Netherlands

tif.nl-powersolutions@tdk.com
www.emea.lambda.tdk.com/nl



TDK-Lambda Corporation

Tel: +81-3-6778-1113
www.jp.lambda.tdk.com



TDK-Lambda Europe GmbH

Tel: +49 7841 666 0
tlg.powersolutions@tdk.com
www.emea.lambda.tdk.com/de



TDK-Lambda (China) Electronics Co. Ltd.

Tel: +86 21 6485-0777
tlc.powersolutions@tdk.com
www.lambda.tdk.com.cn



Austria Sales Office

Tel: +43 2256 655 84
tlg.at-powersolutions@tdk.com
www.emea.lambda.tdk.com/at



TDK-Lambda Singapore Pte Ltd.

Tel: +65 6251 7211
tts.marketing@tdk.com
www.sg.lambda.tdk.com



Switzerland Sales Office

Tel: +41 44 850 53 53
tlg.ch-powersolutions@tdk.com
www.emea.lambda.tdk.com/ch



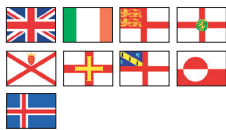
TDK India Private Limited, Power Supply Division

Tel: +91 80 4039-0660
mathew.philip@tdk.com
www.sg.lambda.tdk.com



TDK-Lambda Europ GmbH

Tel: +45 8853 8086
tlg.dk-powersolutions@tdk.com
www.emea.lambda.tdk.com/dk



TDK-Lambda UK Ltd.

Tel: +44 (0) 12 71 85 66 66
tlu.powersolutions@tdk.com
www.emea.lambda.tdk.com/uk



TDK-Lambda Ltd.



Tel: +9 723 902 4333
tli.powersolutions@tdk.com
www.emea.lambda.tdk.com/il-en

For Additional Information, please visit
<https://product.tdk.com/en/power/>



Looking for pricing, stock, or lifecycle information?

Click below to explore more details on WIN SOURCE:

-  [View FQA020ADC-007-S on WIN SOURCE](#)
-  [TDK-Lambda Americas Inc. Information](#)

Optimize Your Supply Chain with WIN SOURCE Solutions

-  Global Sourcing Solution
-  Obsolete Management
-  Cost Control Management
-  Shortage Management
-  Alternative Solution
-  Excess Inventory Management