

10ET1 ✓ ACTIVE

Corcom | Corcom T

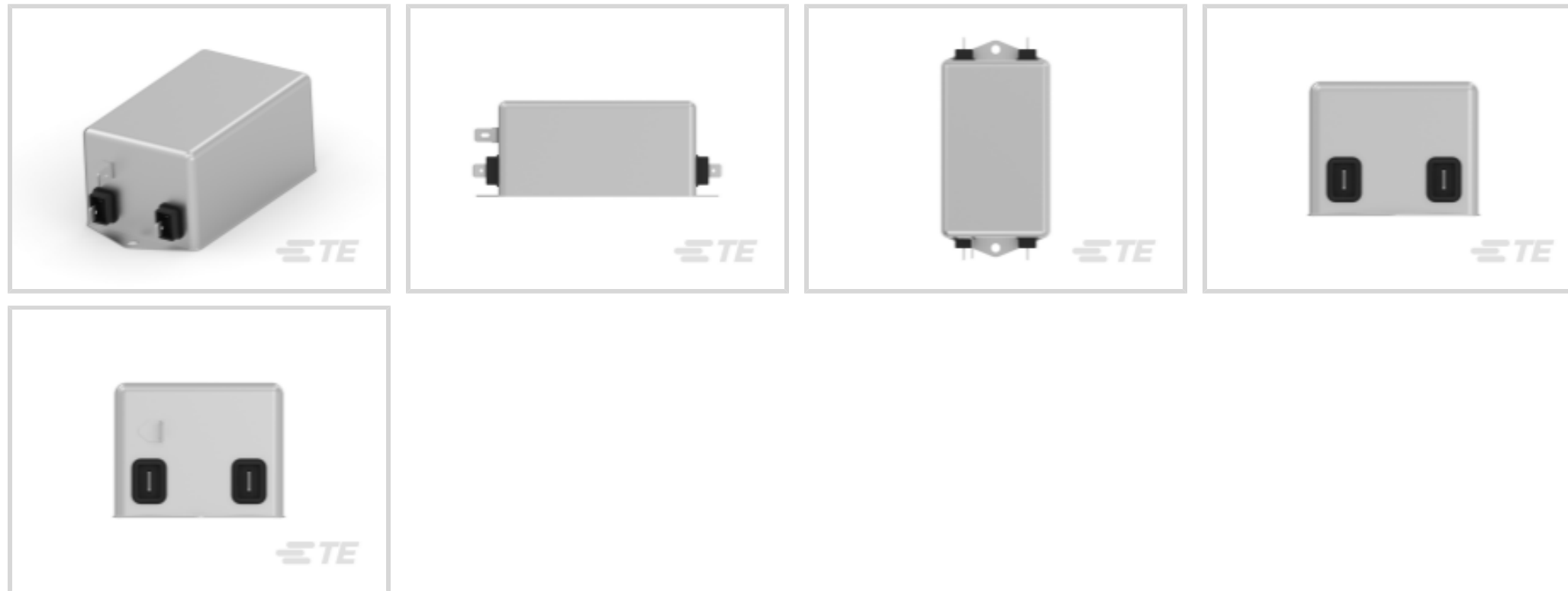
TE Internal #: 6609046-7

10 A Single Phase Filter, FASTON Input, .250" FASTON Output,  
250 VAC, Corcom T, Single Phase Filters

[View on TE.com >](#)



EMI & EMC Solutions > EMC Filters > Power Line Filters > Single Phase Filters > Single Phase Filters, Corcom T Series



Current Rating: 10 A

Input Termination Type: FASTON

Output Termination Type: .250" FASTON

Leakage Current (Max) (120VAC, 60Hz): .3 mA

Leakage Current (Max) (250VAC, 50Hz): .5 mA

[All Single Phase Filters, Corcom T Series \(18\)](#)

## Features

### Product Type Features

Filtering Requirements	Filtered
Ground Choke Option	No
Input Termination Type	FASTON
Output Termination Type	.250" FASTON

### Electrical Characteristics

Current Rating	10 A
Leakage Current (Max) (120VAC, 60Hz)	.3 mA
Leakage Current (Max) (250VAC, 50Hz)	.5 mA
Operating Voltage	250 VAC

### Mechanical Attachment

Panel Mount Feature Type	Flange
--------------------------	--------

### Usage Conditions

Operating Temperature Range	-10 – 40 °C
-----------------------------	-------------



## Product Compliance

[For compliance documentation, visit the product page on TE.com>](#)

EU RoHS Directive 2011/65/EU	Compliant
EU ELV Directive 2000/53/EC	Compliant
China RoHS 2 Directive MIIT Order No 32, 2016	有害物质含量符合标准要求 No Restricted Substance(s) Above Threshold
EU REACH Regulation (EC) No. 1907/2006	Current ECHA Candidate List: JUNE 2025 (250) Candidate List Declared Against: JUNE 2025 (250) Does not contain REACH SVHC
Halogen Content	Not Low Halogen - contains Br or Cl > 900 ppm.
Solder Process Capability	Not applicable for solder process capability

### Product Compliance Disclaimer

This information is provided based on reasonable inquiry of our suppliers and represents our current actual knowledge based on the information they provided. This information is subject to change. The part numbers that TE has identified as EU RoHS compliant have a maximum concentration of 0.1% by weight in homogenous materials for lead, hexavalent chromium, mercury, PBB, PBDE, DBP, BBP, DEHP, DIBP, and 0.01% for cadmium, or qualify for an exemption to these limits as defined in the Annexes of Directive 2011/65/EU (RoHS2). Finished electrical and electronic equipment products will be CE marked as required by Directive 2011/65/EU. Components may not be CE marked. Additionally, the part numbers that TE has identified as EU ELV compliant have a maximum concentration of 0.1% by weight in homogenous materials for lead, hexavalent chromium, and mercury, and 0.01% for cadmium, or qualify for an exemption to these limits as defined in the Annexes of Directive 2000/53/EC (ELV). Regarding the REACH Regulation, the information TE provides on SVHC in articles for this part number is based on the latest European Chemicals Agency (ECHA) 'Guidance on requirements for substances in articles' posted at this URL: <https://echa.europa.eu/guidance-documents/guidance-on-reach>

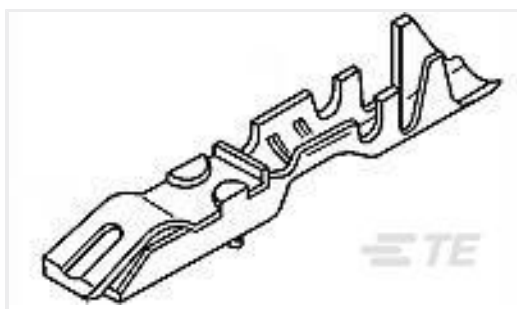
## Compatible Parts



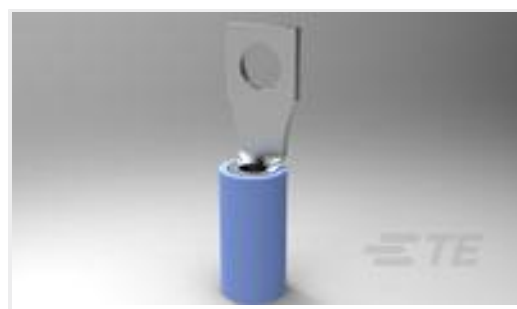
## Also in the Series | Corcom T

Single Phase Filters(18)

## Customers Also Bought



TE Part #87165-1  
LOCKING CLIP ASSY .025 SQ LP



TE Part #2-327958-4  
TERMINAL,PIDG RECT 16-14 6



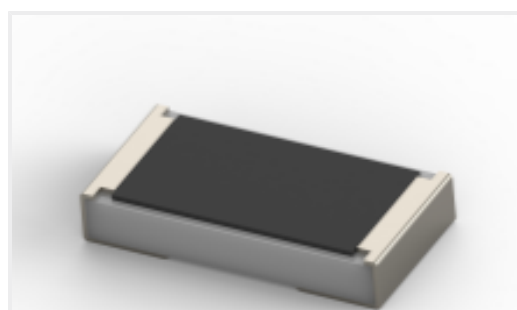
TE Part #1-640456-6  
16P MTA100 HDR ASSY F/L SQ STR



TE Part #2-1437624-3  
PKB70B1/4=KNOB PLASTIC W/SKIRT



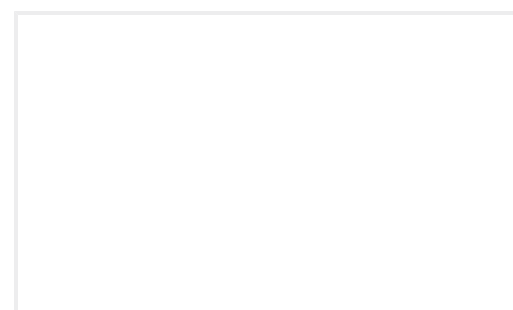
TE Part #2-1625890-6  
2W SM M/OX 5% 1M0



TE Part #CAT-C339-A76B  
SMD Power Resistor: 3 Watt, 1% Tol



TE Part #6609048-3  
3EQ8=F7260 S0



TE Part #11190612-00  
10000 PSI, 7/16-20UNF FEMALE, 1-6V,  
PACK



TE Part #1SNA174784R2000  
BJS6-20

## Documents

### Product Drawings

[10ET1=F7313 S0](#)

English

### CAD Files

Customer View Model

[ENG\\_CVM\\_CVM\\_6609046-7\\_N1.3d\\_igs.zip](#)

English

Customer View Model



[ENG\\_CVM\\_CVM\\_6609046-7\\_N1.3d\\_stp.zip](#)

English

**Customer View Model**

[ENG\\_CVM\\_CVM\\_6609046-7\\_N1.2d\\_dxf.zip](#)

English

**3D PDF**

3D

By downloading the CAD file I accept and agree to the [Terms and Conditions](#) of use.

---

### Datasheets & Catalog Pages

[1654001\\_CORCOM\\_PRODUCT\\_GUIDE\\_T\\_SERIES](#)

English

[1-1654250-1\\_CORCOM\\_EMI\\_RFI\\_QRG](#)

English

[Schaffner and Corcom Selector Chart](#)

English

Looking for pricing, stock, or lifecycle information?

Click below to explore more details on WIN SOURCE:

[View 10ET1 on WIN SOURCE](#)

[TE Connectivity Information](#)

### Optimize Your Supply Chain with WIN SOURCE Solutions

- ✓ Global Sourcing Solution
- ✓ Obsolete Management
- ✓ Cost Control Management
- ✓ Shortage Management
- ✓ Alternative Solution
- ✓ Excess Inventory Management