



SPECIFICATION FOR APPROVAL

TO: _____

PART NO.		REV.		DELTA SAMPLE ISSUE NO	
PART NAME	EMI FILTER			DELTA MODEL	07RPG5
ORDER P/N.	07RPG5			SAMPLE ISSUE DATE	

1. ELECTRICAL CHARACTERISTICS:

1-1. VOLTAGE RATING 75V DC MAX.

1-2. CURRENT RATING

A. AT 75VDC 7A Max.

1-3. HIPOT RATING (FOR ONE MINUTE)

A. LINE TO GROUND 1500VDC

B. LINE TO LINE 100VDC

1-4. TEMPERATURE RANGE: -40 TO +100 DEGREE C

1-5. MINIMUM INSERTION LOSS IN dB: (AT 50 OHM SYSTEM)

FREQ. MHZ	.01	.05	.10	.15	.50	1.0	5.0	10	30
COM. MODE dB	1	5	7	7	30	40	35	30	25
DIF. MODE dB	10	15	15	50	50	45	40	35	30

1-6. SAFETY:



REPORT BY	CHECKED BY	APPROVED BY		
			REV.	

DELTA ELECTRONICS, INC.

186 RUEY KUANG ROAD, NEIHU, TAIPEI 114,
TAIWAN, R.O.C.
TEL:886-2-87972088 FAX:886-2-87972120

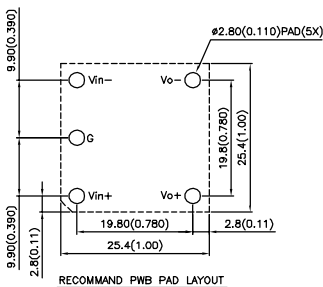
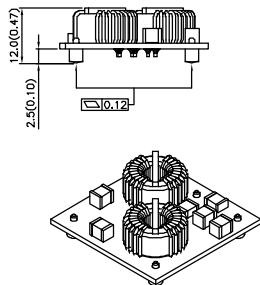
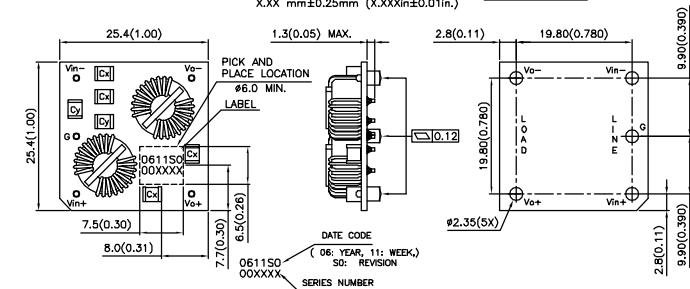
PART NO.		REV.		DELTA SAMPLE ISSUE NO	
PART NAME	EMI FILTER		DELTA MODEL	07RPG5	
ORDER P/N.	07RPG5		SAMPLE ISSUE DATE		

2. PHYSICAL DIMENSIONS:

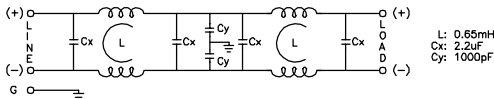
NOTES:

 TOLERANCES: X.X mm \pm 0.5mm (X.XX in. \pm 0.02in.)
 X.XX mm \pm 0.25mm (X.XXXin \pm 0.01in.)

UNIT: mm(INCHES)



3. SCHEMATIC:



REPORT BY	CHECKED BY	APPROVED BY	UNLESS OTHERWISE SPECIFIED DIMENSION TOLERANCE
			DCEIMALS .X \pm .XX \pm ANGLES \pm
			REV.

Looking for pricing, stock, or lifecycle

Click below to explore more details on WIN SOURCE

 [View FL75L07A on WIN SOURCE](#)

 [Delta Electronics](#) Information

Optimize Your Supply Chain with W

-  Global Sourcing Solution
-  Obsolete Management
-  Cost Control Management
-  Shortage Management
-  Alternative Solution
-  Excess Inventory Management