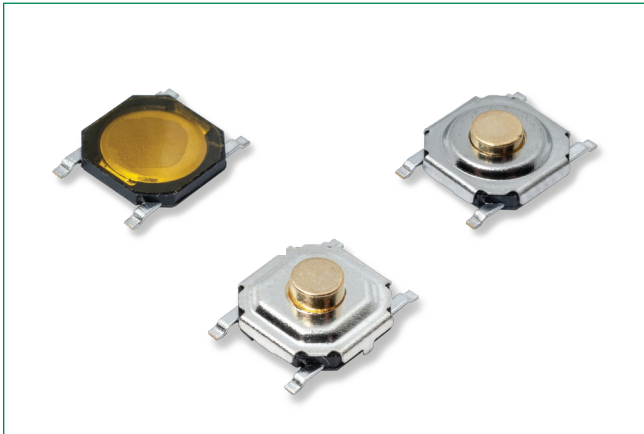


PTS526 Series

Microminiature SMT Top Actuated



Description

The PTS526 series tactile switch is a small 5.2 x 5.2 mm form factor in SMT version with 4 different heights and 3 available actuation forces, ideal for general usage applications. PTS526 tactile switch also includes ground pin options.

Features & Benefits

- 5.2 x 5.2 mm footprint
- Variable thickness
- Commercial grade

Applications

- IoT devices
- Home automation
- Remote controls

Specifications

| | |
|----------------------------|---|
| Function | Momentary action |
| Contact Arrangement | 1 make contact SPST NO |
| Terminals | J and G type for SMT |
| Travel | 0.25 mm +/- 0.1 mm |
| Packaging | In reels of 5,000 pieces for 0.8 mm height. In reels of 4,000 pieces for 1.5 ; 1.7 and 2.0 mm height. Dimensions of reels according to EIA 481B. External diameter 330 mm. |

Electrical Characteristics

| | |
|------------------------------|------------------|
| Maximum Voltage | 12 VDC |
| Maximum Current DC | 50 mA |
| Dielectric Strength | 250 vA C (1mn) |
| Contact Resistance | ≤ 100 mΩ initial |
| Insulation Resistance | ≥ 100 MΩ |
| Bounce Time | ≤ 10 ms |

Environmental Characteristics

| | |
|------------------------------|---------------|
| Operating Temperature | -40°C to 85°C |
|------------------------------|---------------|

Process

| | |
|------------------|---|
| Soldering | This component is suited to the following methods: Infrared Reflow Soldering in accordance with IEC61760-1 |
|------------------|---|

PTS526 Series

Microminiature SMT Top Actuated



Mechanical Characteristics

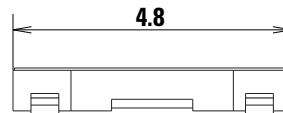
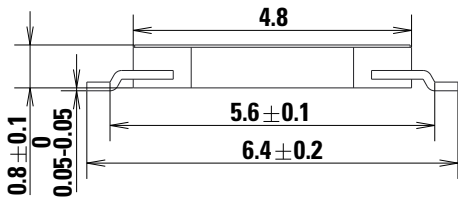
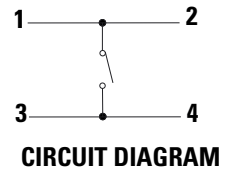
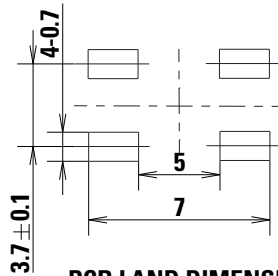
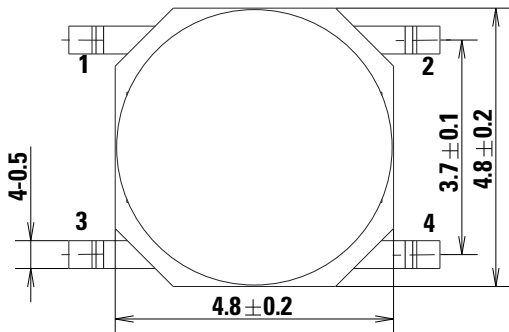
| Item Description | Operation Force (gf) | Operating Life | Ground Pin |
|----------------------|----------------------|----------------|--------------------|
| PTS526SM1SMTR2 LFS | 160 ± 50 | 500,000 | Without ground pin |
| PTS526SK1SMTR2 LFS | 250 ± 50 | 200,000 | |
| PTS526SP1SMTR2 LFS | 320 ± 50 | 100,000 | |
| PTS526SMG1SMTR2 LFS | 160 ± 50 | 500,000 | With ground pin |
| PTS526SKG1SMTR2 LFS | 250 ± 50 | 200,000 | |
| PTS526SPG1SMTR2 LFS | 320 ± 50 | 100,000 | |
| PTS526SM1SMTR21 LFS | 160 ± 50 | 1,000,000 | Without ground pin |
| PTS526SMG1SMTR21 LFS | 160 ± 50 | 1,000,000 | With ground pin |

Notes:

1. PTS526SX08 SMTR2 LFS 160gf version with 200,000 life cycles
 Specifications listed above are for switches with standard options. For information on specific and custom switches, consult Customer Service Center. The PTS series is not certified for using in Automotive application and no PPAP. However, in the case of some automotive accessories and specific applications for 2 and 3 wheeled vehicles the PTS is widely used and very suitable. Please contact your local representative to discuss your application and the best switch solution.

Dimensions (mm)

0.8 mm Height – G Leads Lead Only, No Ground Pin

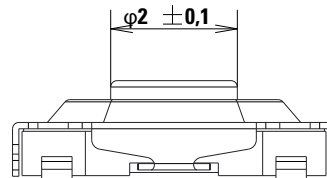
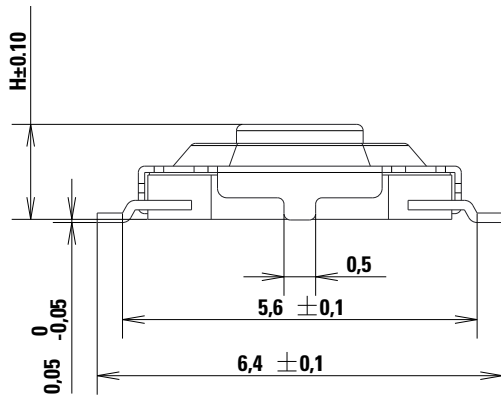
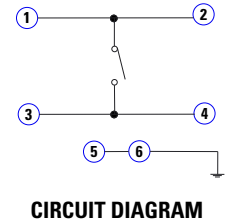
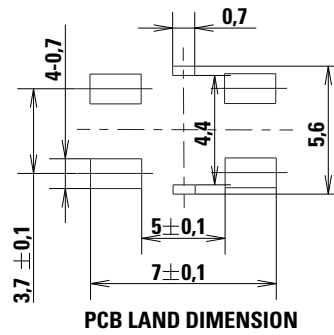
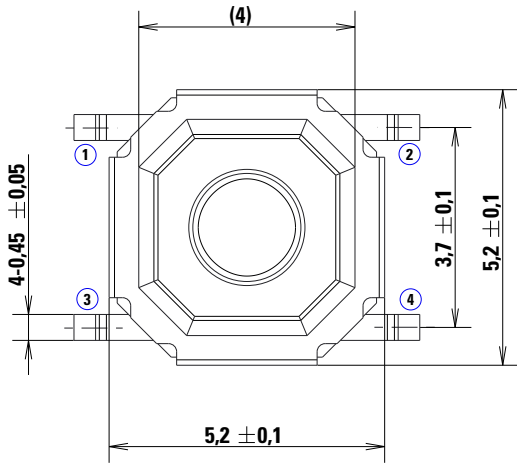


PTS526 Series

Microminiature SMT Top Actuated



1.5 ; 1.7 and 2.0 mm Height – G Leads, with Ground Pin

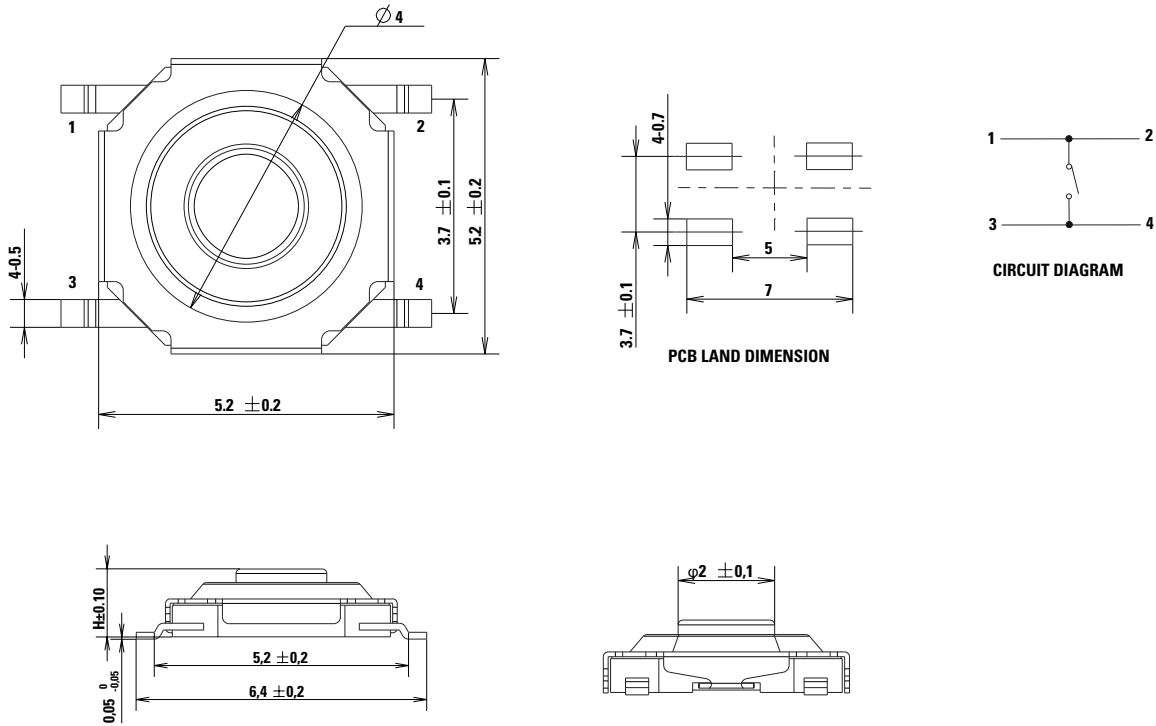


PTS526 Series

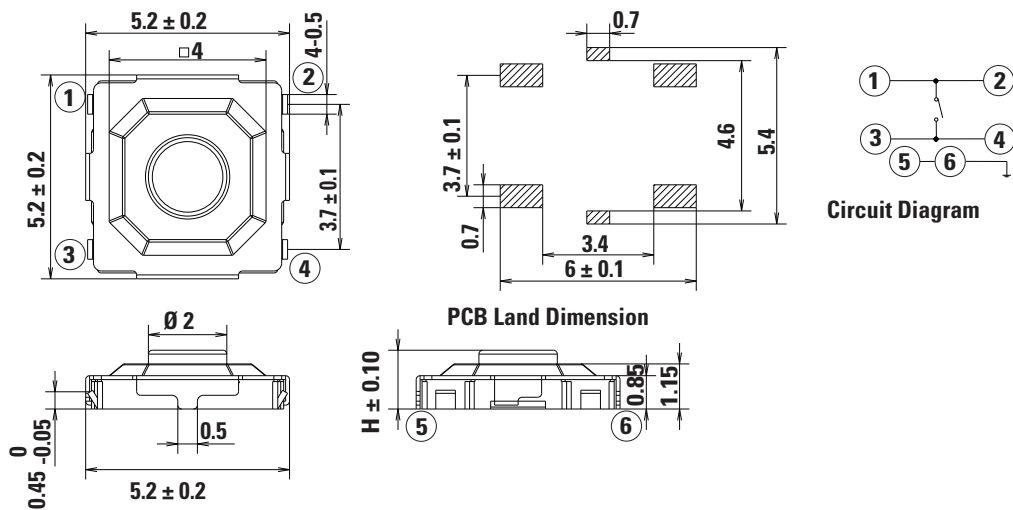
Microminiature SMT Top Actuated



1.5 ; 1.7 and 2.0 mm Height – G Leads, No Ground Pin



1.5 ; 1.7 and 2.0 mm height – J leads, with ground pin

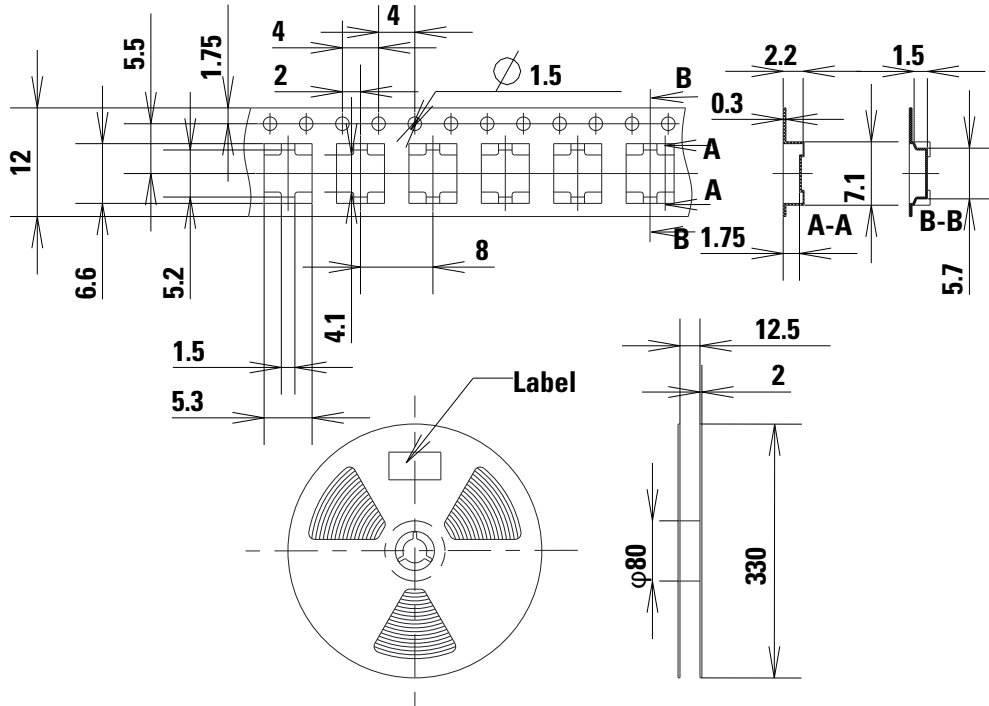


PTS526 Series

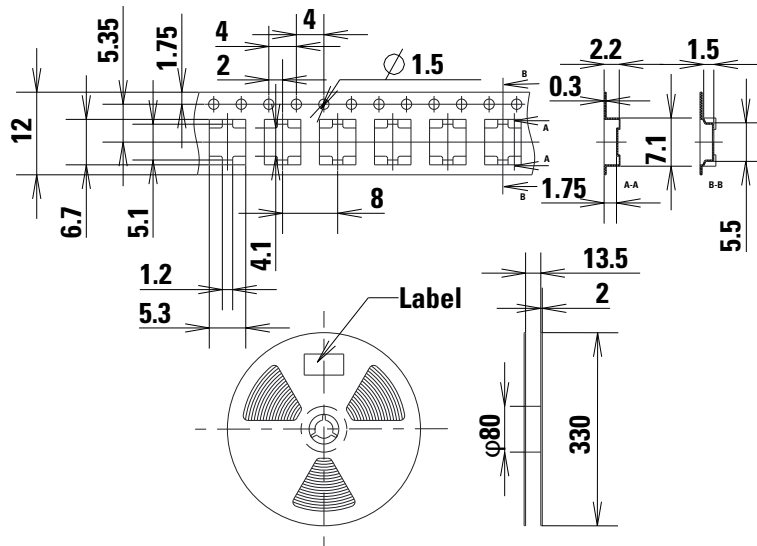
Microminiature SMT Top Actuated



Tape & Reel
0.8 mm Height
5,000 Pieces per Reel



1.5; 1.7 and 2.0 mm Height
4,000 Pieces per Reel



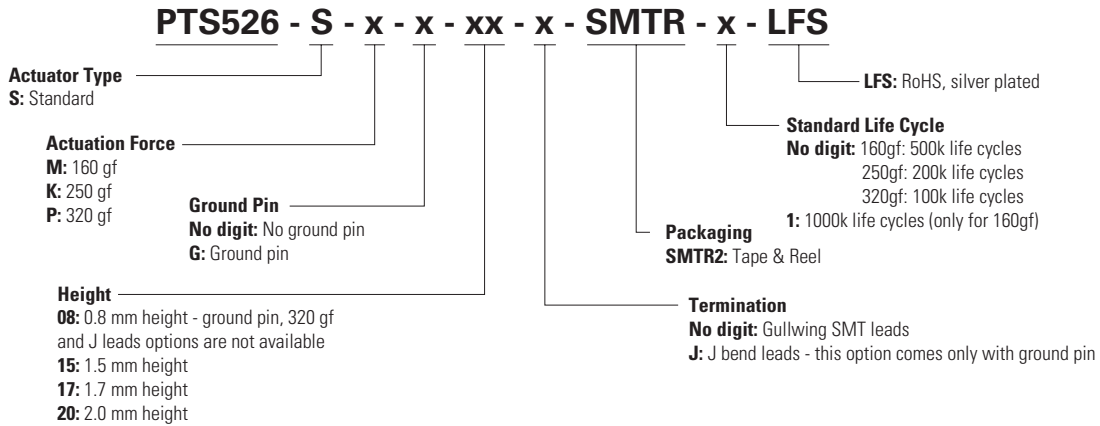
PTS526 Series

Microminiature SMT Top Actuated



Ordering Number

Our easy build-a-switch concept allows you to mix and match options to create the switch you need. To order, select desired option from each category and place it in the appropriate box. For any part number different from those listed above, please consult your local representative.





Liability Limitation

This datasheet does not provide enough information for applications that require a certain level of quality or safety such as automotive, medical systems, or safety equipment. Please contact customer service for the contractual specification package.

Disclaimer Notice - Information furnished is believed to be accurate and reliable. However, users should independently evaluate the suitability of and test each product selected for their own applications. Littelfuse products are not designed for, and may not be used in, all applications. Read complete Disclaimer Notice at <http://www.littelfuse.com/disclaimer-electronics>.

Looking for pricing, stock, or lifecycle information?

Click below to explore more details on WIN SOURCE:

-  [View PTS526SKG15SMTR2 LFS](#) on WIN SOURCE
-  [C&K Components](#) Information

Optimize Your Supply Chain with WIN SOURCE Solutions

-  Global Sourcing Solution
-  Obsolete Management
-  Cost Control Management
-  Shortage Management
-  Alternative Solution
-  Excess Inventory Management