



**THE DATASHEET OF**  
**1313-0004-XX**



**cell chemistry:** Li-Ion  
**cell size:** C (26500)  
**cell type:** round cell

**Conditions**

**nominal output voltage:** 1.5 V when SOC (state of charge) of battery is >10%  
 reduced output voltage: 1.05 V when SOC (state of charge) of battery is <10%

**capacity**  
 nominal: 2500 mAh discharge at 0.2C  
 minimum: 2300 mAh discharge at 0.2C  
 2100 mAh discharge at 0.5C  
 ta: 20°C; EV(Discharge End Voltage): 0.9V

**discharge** ta: 0...45°C  
 max. continuous discharge current: 2000 mA  
 nom. discharge current: 500 mA

**charge via type-C connector (with USB charger)**

supply voltage: 5 V ± 0.25V  
 charge current: 500 mA ± 10%  
 charge time: 2.75 h ± 0.5h

**external charge (at battery + / - poles)** is not allowed; charge battery via type-C connector only

internal resistance: n/a at 1kHz, sine wave measurement according to IEC 896-2

**built-in li-ion battery:** 3.7 V / 1100mAh  
 energy: 4.07 Wh

**output protection functions** protection against short circuit and overload  
 overload cut off current: 2.5 A ± 0.5A

**deep discharge protection**  
 cut-off voltage of int. battery: 2.6 V ± 0.3V

**LED charge indicator**

(green colour) flashes during charge  
 lights at end of charge (battery fully charged)

**life time expectance** (C>70% of min. capacity) ≥ 1200 cycles at 0.2C charge/discharge rate

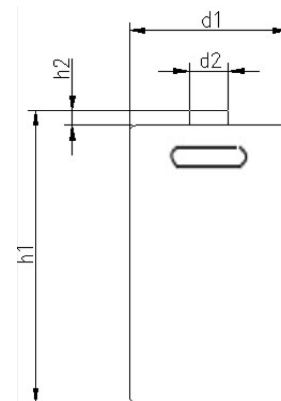
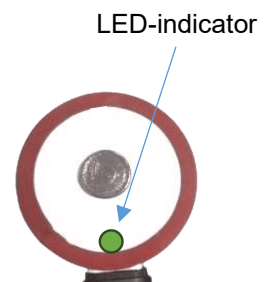
**self discharge:**  
 ≤ 2 %/month at 20°C  
 ≤ 5 %/month at 30°C  
 ≤ 10 %/month at 40°C


**ambient temperature range:**  
 0...45 °C charge  
 - 20...60 °C discharge  
 - 20...25 °C storage max. 1year  
 - 20...45 °C storage max. 3months

recommended SOC: 30...50 % for long-time storage  
 (SOC = state of charge)

**mechanical specifications**

cell dimensions (incl. sleeve)  
 diameter d1: 25.5 - 0.5 mm  
 diameter d2: 7.0 ± 0.5 mm  
 height h1: 50.0 - 2.0 mm  
 height h2: 1.5 ± 0.5 mm  
 weight: 40 ± 3 g



	<b>ANSMANN Specifications for model:</b>	<b>C (26500) Li-Ion Battery 1.5V 2500mAh w. type-C charge</b>
	data sheet no. / part no.	1313-0004
	s.n.	705163
	author / date	TG / 08.05.2025

## Looking for pricing, stock, or lifecycle information?

Click below to explore more details on WIN SOURCE:

- [View 1313-0004-XX on WIN SOURCE](#)
- [ANSMANN \(Huizhou\) Trading CO., LTD Information](#)

## Optimize Your Supply Chain with WIN SOURCE Solutions

- ✓ Global Sourcing Solution
- ✓ Obsolete Management
- ✓ Cost Control Management
- ✓ Shortage Management
- ✓ Alternative Solution
- ✓ Excess Inventory Management