



THE DATASHEET OF
1514-0011-XX



battery type: Alkaline D Size Battery (HIGH POWER)
battery size: ANSI:13A; IEC:LR20; D size
chemical system: Zn/MnO₂

Conditions

nominal voltage: 1.50 V
open circuit voltage: 1.50...1.68 V new battery

capacity rated: 17000 mAh
 all measurements at 20°C ±2°C ambient discharge with 25mA current load; 24h/d
 End Voltage (EV): 0.8V

minimum: 18.4 h
 (for IQC measurement) at 2.2ohms constant resistance discharge; 24h/d
 End Voltage (EV): 0.9V

typical service output

Test condition					Initial		After 12months storage	After 60months storage
Application	Load	Daily period	End voltage (V)	Unit	Normal	MAD		
Toy	2.2Ω	1h/d	0.8	h	26.0	23.6	21.5	18.9
Portable lighting	2.2Ω	4m/15m,8 h/d	0.9	min	1420	1345	1294	1076
Portable stereo	600mA	2h/d	0.9	h	18.5	17.6	17.2	14.1
※	2.2Ω	24h/d	0.9	h	20.5	18.4	/	/

Marked with※is a quick test item for shipment release

shelf life: 5 years under proper storage conditions

leakage resistance over discharge: no leakage
 After measured discharge capacity, continue discharge until load voltage drop to less than 40% of original; T: 20°C±2°C ; RH: 55±20%

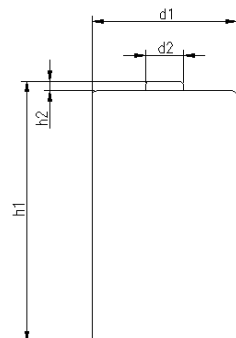
high temperature: no leakage
 store 40 days at T: 60°C±2°C; RH:90%±5%


ambient temperature range: 5...30 °C

recommended storage conditions: 18...22 °C ambient temperature
 35...75 % rel. humidity

mechanical specifications

cell dimensions
 diameter d1: 33.25 ± 0.95 mm
 diameter d2: max. 9.5 mm
 height h1: 60.5 ± 1.0 mm
 height h2: min. 1.5 mm
 weight: 140 ± 4 g



	ANSMANN Specifications for model:	Alkaline Battery D- size
	data sheet no. / part no.	
	s.n.	705623
	author / date	JH / 26.11.2025

Looking for pricing, stock, or lifecycle information?

Click below to explore more details on WIN SOURCE:

- [View 1514-0011-XX on WIN SOURCE](#)
- [ANSMANN \(Huizhou\) Trading CO., LTD Information](#)

Optimize Your Supply Chain with WIN SOURCE Solutions

- ✓ Global Sourcing Solution
- ✓ Obsolete Management
- ✓ Cost Control Management
- ✓ Shortage Management
- ✓ Alternative Solution
- ✓ Excess Inventory Management