



THE DATASHEET OF
1516-0005-XX



battery type: Lithium Button Cell
battery size: CR1025
chemical system: Lithium Manganese Dioxide

Conditions

nominal voltage: 3.0 V
open circuit voltage: 3.0...3.4 V (new battery)
 2.9...3.4 V (after 1 year storage at 20°C)

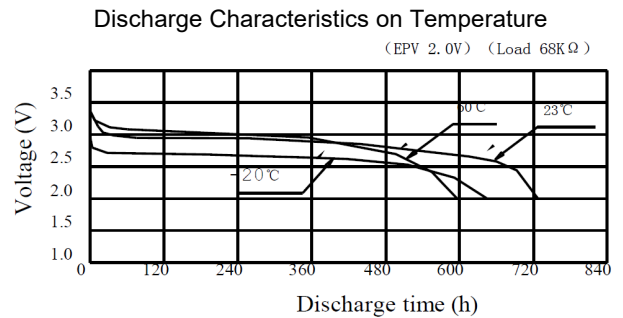
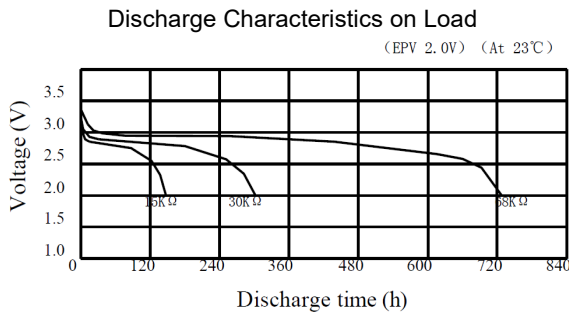
all measurements at 22 ± 2°C ambient

capacity rated: 30 mAh (continuous discharge at 68kΩ load; 24hours/day End Voltage (EV): 2.0V)
minimum: 27 mAh (continuous discharge at 68kΩ load; 24hours/day EV: 2.0V)

standard discharge time minimum: 165 h (at 18kΩ load (for QC measurement) EV: 2.0V)

discharge currents standard: 0.1 mA
 max. recommended current under continuous discharge: 1 mA
 max. recommended current under pulse discharge: 5 mA

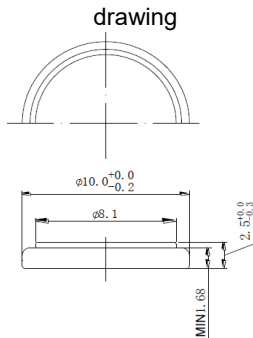
discharge diagrams:



shelf life: 10 years (under proper storage conditions (ta: ≤ 22°C; RH: 60 ± 15%))
self-discharge: ≤ 2 % (per year (at 20°C ambient temperature))
operating temperature range: - 20...70 °C
storage temperature: 0...30 °C (recommended)

mechanical specifications:

battery diameter: 10.0mm +0/-0.2mm
 height: 2.5mm +0/-0.3mm



printed production date 4 digits (YYMM)
 e.g. 1806 = 2018 June

nominal weight: 0.7 g (approx.)

| | | |
|--|--|-----------------------------------|
| | ANSMANN Specifications for model: | Lithium Button Cell CR1025 |
| | data sheet no. / part no. | |
| | s.n. | 704080 |
| | author / date | TG / 02.03.2022 |

Looking for pricing, stock, or lifecycle information?

Click below to explore more details on WIN SOURCE:

- [⊖ View 1516-0005-XX on WIN SOURCE](#)
- [⊖ ANSMANN \(Huizhou\) Trading CO., LTD Information](#)

Optimize Your Supply Chain with WIN SOURCE Solutions

- ✓ Global Sourcing Solution
- ✓ Obsolete Management
- ✓ Cost Control Management
- ✓ Shortage Management
- ✓ Alternative Solution
- ✓ Excess Inventory Management