



THE DATASHEET OF
1516-0008-XX



battery type: Lithium Button Cell
battery size: CR1225
chemical system: Lithium Manganese Dioxide

Conditions

nominal voltage: 3.0 V
open circuit voltage: 3.0...3.4 V (new battery)
 2.9...3.4 V (after 1 year storage at 20°C)

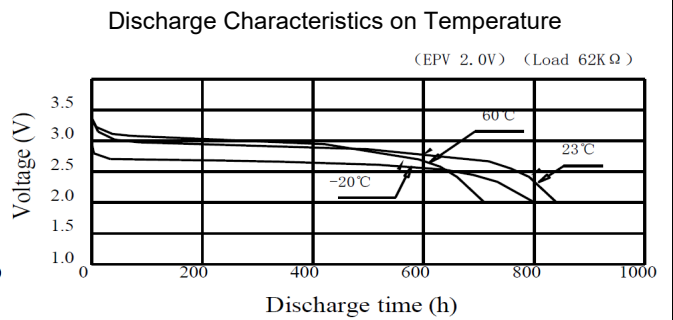
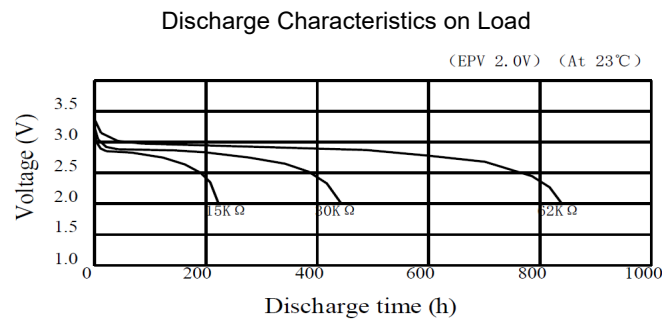
all measurements at 22 ± 2°C ambient

capacity
rated: 50 mAh (continuous discharge at 62kΩ load; 24hours/day End Voltage (EV): 2.0V)
minimum: 45 mAh (continuous discharge at 62kΩ load; 24hours/day EV: 2.0V)

standard discharge time
minimum: 150 h (at 10kΩ load (for QC measurement) EV: 2.0V)

discharge currents
standard: 0.1 mA
max. recommended current under continuous discharge: 1 mA
max. recommended current under pulse discharge: 5 mA

discharge diagrams:

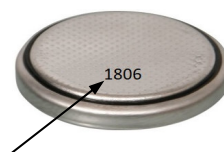
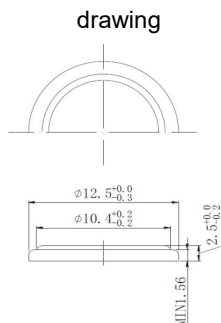


shelf life: 10 years (under proper storage conditions (ta: ≤ 22°C; RH: 60 ± 15%))
self-discharge: ≤ 2 % (per year (at 20°C ambient temperature))

operating temperature range: - 20...70 °C
storage temperature: 0...30 °C (recommended)

mechanical specifications:

outer battery dimensions
diameter: 12.5mm +0/-0.3mm
height: 2.5mm +0/-0.2mm



printed production date
 4 digits (YYMM)
 e.g. 1806 = 2018 June



nominal weight: 0.9 g (approx.)

	ANSMANN Specifications for model:	Lithium Button Cell
	data sheet no. / part no.	CR1225
	s.n.	704080
	author / date	TG / 27.01.2020

Looking for pricing, stock, or lifecycle information?

Click below to explore more details on WIN SOURCE:

- [View 1516-0008-XX on WIN SOURCE](#)
- [ANSMANN \(Huizhou\) Trading CO., LTD Information](#)

Optimize Your Supply Chain with WIN SOURCE Solutions

- ✓ Global Sourcing Solution
- ✓ Obsolete Management
- ✓ Cost Control Management
- ✓ Shortage Management
- ✓ Alternative Solution
- ✓ Excess Inventory Management