



**THE DATASHEET OF**  
**1516-0010-XX**



**battery type:** Lithium Button Cell  
**battery size:** CR2477  
**chemical system:** Lithium Manganese Dioxide

**Conditions**

**nominal voltage:** 3.0 V  
**open circuit voltage:** 3.0...3.4 V (new battery)  
 2.9...3.4 V (after 1 year storage at 20°C)

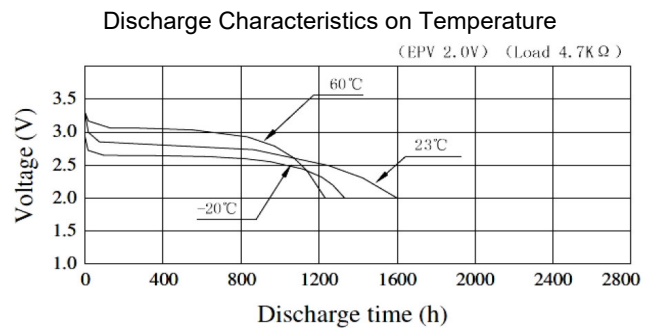
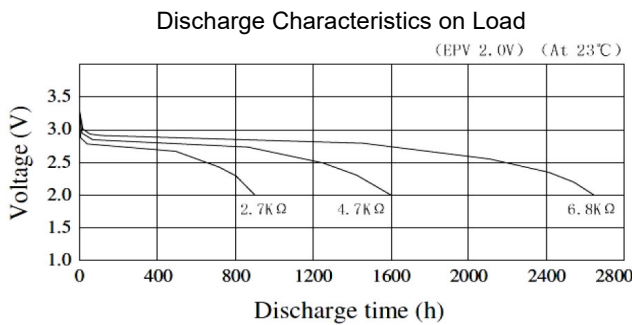
all measurements at 22 ± 2°C ambient

**capacity rated:** 1000 mAh (continuous discharge at 4.7kΩ load; 24hours/day End Voltage (EV): 2.0V)  
**minimum:** 900 mAh (continuous discharge at 4.7kΩ load; 24hours/day EV: 2.0V)

**standard discharge time minimum:** 155 h (at 680Ω load (for QC measurement) EV: 2.0V)

**discharge currents standard:** 0.2 mA  
 max. recommended current under continuous discharge: 6 mA  
 max. recommended current under pulse discharge: 30 mA

**discharge diagrams:**

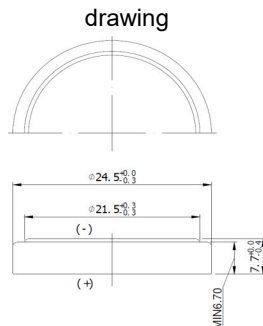


**shelf life:** 10 years (under proper storage conditions (ta: ≤ 22°C; RH: 60 ± 15%))  
**self-discharge:** ≤ 2 % (per year (at 20°C ambient temperature))

**operating temperature range:** - 20...70 °C  
**storage temperature:** 0...30 °C (recommended)

**mechanical specifications:**


outer battery dimensions  
 diameter: 24.5mm +0/-0.3mm  
 height: 7.7mm +0/-0.4mm



printed production date  
 4 digits (YYMM)  
 e.g. 1806 = 2018 June



**nominal weight:** 10.5 g (approx.)

|   |  |                                       |
|---|--|---------------------------------------|
|  | <b>ANSMANN Specifications for model:</b> | <b>Lithium Button Cell<br/>CR2477</b> |
|   | data sheet no. / part no.                |                                       |
|   | s.n.                                     | 704080                                |
|   | author / date                            | MV / 11.01.2022                       |

## Looking for pricing, stock, or lifecycle information?

Click below to explore more details on WIN SOURCE:

- [View 1516-0010-XX on WIN SOURCE](#)
- [ANSMANN \(Huizhou\) Trading CO., LTD Information](#)

## Optimize Your Supply Chain with WIN SOURCE Solutions

- ✓ Global Sourcing Solution
- ✓ Obsolete Management
- ✓ Cost Control Management
- ✓ Shortage Management
- ✓ Alternative Solution
- ✓ Excess Inventory Management