



THE DATASHEET OF
1516-0013-XX



battery type: Lithium Button Cell
battery size: CR3032
chemical system: Lithium Manganese Dioxide

Conditions

nominal voltage: 3.0 V
open circuit voltage: 3.0...3.4 V (new battery)
 2.9...3.4 V (after 1 year storage at 20°C)

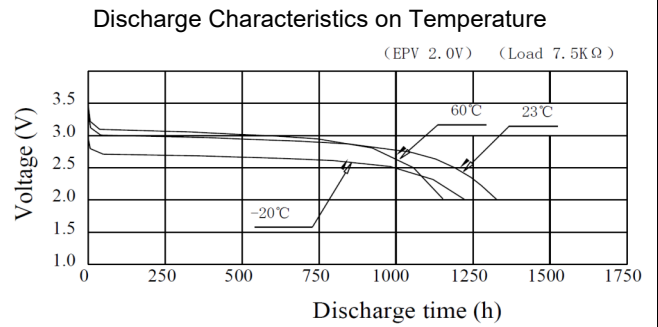
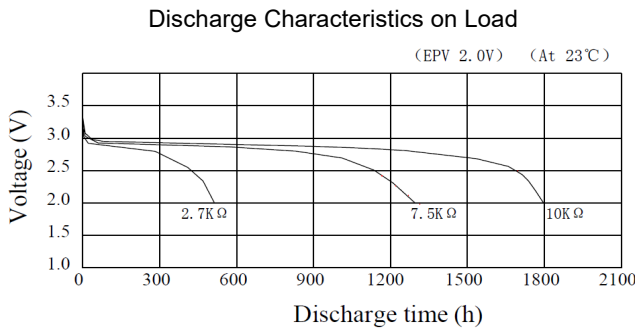
all measurements at 22 ± 2°C ambient

capacity rated: 500 mAh (continuous discharge at 7.5kΩ load; 24hours/day End Voltage (EV): 2.0V)
minimum: 450 mAh (continuous discharge at 7.5kΩ load; 24hours/day EV: 2.0V)

standard discharge time minimum: 150 h (at 1.2kΩ load (for QC measurement) EV: 2.0V)

discharge currents standard: 0.2 mA
 max. recommended current under continuous discharge: 5 mA
 max. recommended current under pulse discharge: 20 mA

discharge diagrams:



shelf life: 10 years under proper storage conditions (ta: ≤ 22°C; RH: 60 ± 15%)

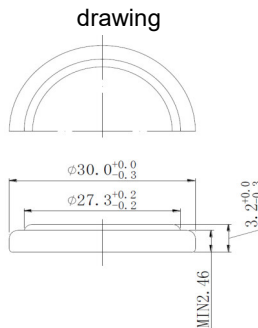
self-discharge: ≤ 2 % per year (at 20°C ambient temperature)

operating temperature range: - 20...70 °C

storage temperature: 0...30 °C (recommended)

mechanical specifications:

outer battery dimensions
 diameter: 30.0mm +0/-0.3mm
 height: 3.2mm +0/-0.4mm



printed production date
 4 digits (YYMM)
 e.g. 1806 = 2018 June



nominal weight: 6.8 g (approx.)

	ANSMANN Specifications for model:	CR3032 Lithium Button Cell bulk package
	data sheet no. / part no.	1506-0009
	s.n.	704080
	author / date	MV / 11.01.2022

Looking for pricing, stock, or lifecycle information?

Click below to explore more details on WIN SOURCE:

- [View 1516-0013-XX on WIN SOURCE](#)
- [ANSMANN \(Huizhou\) Trading CO., LTD Information](#)

Optimize Your Supply Chain with WIN SOURCE Solutions

- ✓ Global Sourcing Solution
- ✓ Obsolete Management
- ✓ Cost Control Management
- ✓ Shortage Management
- ✓ Alternative Solution
- ✓ Excess Inventory Management