



THE DATASHEET OF
1516-0097-XX



battery type: lithium primary battery
battery size: CR 1/3N (CR11108)
chemical system: Manganese Dioxide Lithium Battery

nominal voltage: 3.0 V
open circuit voltage: 3.0...3.5 V
closed circuit voltage: 2.9...3.4 V

capacity

rated: 160 mAh discharge at 3mA constant current; 24hours/day
 End Voltage (EV): 2.0V

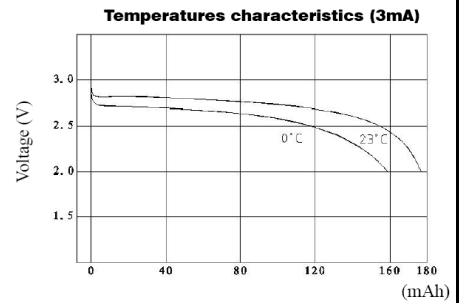
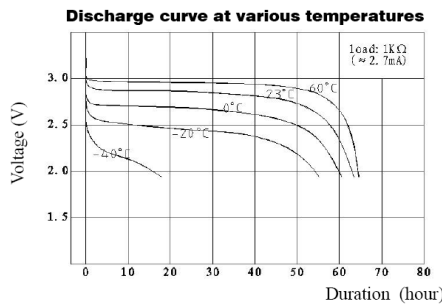
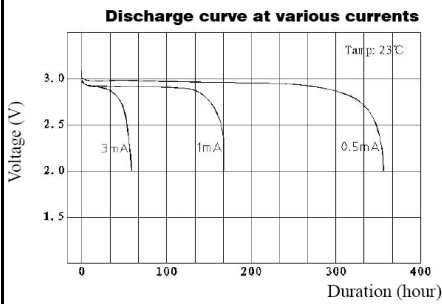
minimum: 170 mAh resistor load discharge: 6.2kΩ; 24hours/day
 End Voltage (EV): 2.0V

155 mAh resistor load discharge: 1kΩ; 24hours/day
 End Voltage (EV): 2.0V

standard discharge time
 minimum: ≥ 57 h at 1kΩ load (for QC measurement)
 EV: 2.0V

conditions, remarks

discharge diagrams



max. discharge current
 continuous: 60 mA
 pulse: 140 mA

internal resistance: ≤ 3 Ω sine wave AC method (1kHz; 0.1mA)
 (new battery) according to IEC 896-2

shelf life: 10 years under proper storage conditions

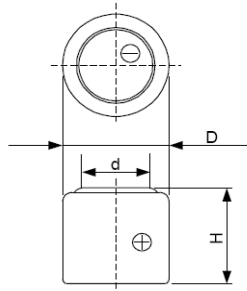
ambient temperature range:
 - 40...60 °C operating temperature
 - 20...45 °C storage temperature
 5...20 °C recommended storage temperature

relative humidity: ≤ 70% during storage

mechanical specifications

cell dimensions
 diameter: 11.6 - 0.2 mm
 height: 10.8 - 0.4 mm
 weight: 3.2 ± 0.3 g

blister card
 dimensions: 56 x 71.5 mm
 weight (incl. battery) 5 g



	ANSMANN Specifications for model:	CR 1/3N Lithium Battery
	data sheet no. / part no.	
	s.n.	703385
	author / date	TG / 05.05.2022

Looking for pricing, stock, or lifecycle information?

Click below to explore more details on WIN SOURCE:

- [View 1516-0097-XX on WIN SOURCE](#)
- [ANSMANN \(Huizhou\) Trading CO., LTD Information](#)

Optimize Your Supply Chain with WIN SOURCE Solutions

- ✓ Global Sourcing Solution
- ✓ Obsolete Management
- ✓ Cost Control Management
- ✓ Shortage Management
- ✓ Alternative Solution
- ✓ Excess Inventory Management