



THE DATASHEET OF
2310-3007-XX

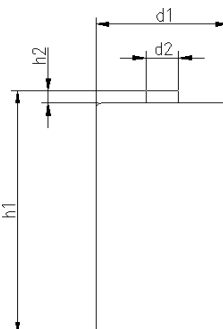


		Conditions	
cell type:	NiMH		
cell size:	C		
nominal voltage:	1.2 V		
max. charge voltage:	1.5 V	at standard charge (0.1C / 20°C)	
capacity			
nominal:	4500 mAh	discharge at 0.2C	
minimum:	4300 mAh	discharge at 0.2C	
	3870 mAh	discharge at 1C	
		1.0V end discharge voltage	
		ta: 20°C	
max. continuous discharge current:	13.5 A	ta: 0...45°C	
charge		current	time
standard charge:	450 mA	1250 mA	16hrs
quick charge:	1250 mA	2000 mA	4hrs
fast charge:	2000 mA		2.5hrs
recommended charge termination control parameters:	0...5 mV	- delta V	
	0.8...1 °C	temperature rise per minute	
	45...50 °C	TCO (temperature cut off)	
trickle charge current:	40...200 mA	(recommended)	
continuous overcharge: (less than 1 year)	≤ 400 mA	no conspicuous deformation no leakage	
internal resistance: (impedance)	≤ 10 mΩ	at 1KHz battery fully charged	
life expectancy:	≥ 500 cycles	acc. IEC standard	
self discharge			
charge retention: (at ≤ 20°C ambient)	≥ 85 %	after 6 months storage	
	≥ 80 %	after 12 months storage	
initial capacity:	≥ 3000 mAh	within 30 days after delivery discharge at 0.2C	
ambient temperature range:	0...45 °C	standard charge	
	10...40 °C	fast charge	
	- 20...55 °C	discharge	
	- 20...50 °C	storage (≤3months)	
	- 20...40 °C	storage (≤6months)	
	- 20...30 °C	storage (≤24months)	

QCT1: 20/4100/10
QCT2: 30/3800/15

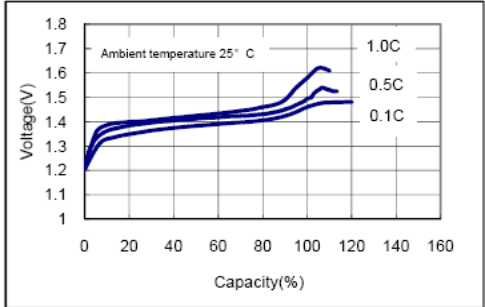
mechanical specifications

cell dimensions	
diameter d1:	25.8 - 0.8 mm
diameter d2: approx.	11.0 mm
height h1:	50.0 - 2.0 mm
height h2:	0.0 - 0.3 mm
weight:	80 ± 5 g

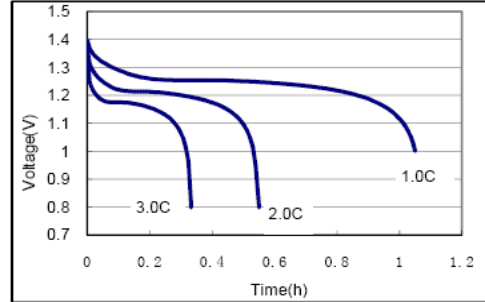


Diagrams

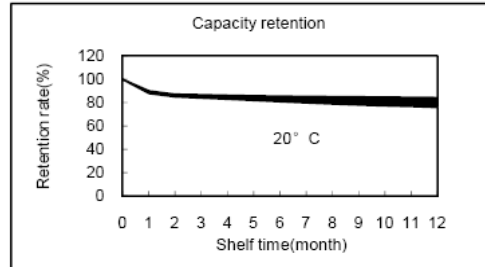
Charge characteristics



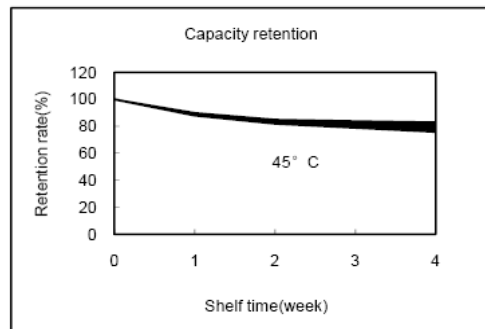
Discharge characteristics



Capacity retention characteristics



Capacity retention characteristics



tags
material: nickel
length: 30mm
width: 5mm
thickness: 0.12mm



	ANSMANN Specifications for model:	C4500mAh RTU-type FLAT TOP with tags (Z-form) in plastic bag
	data sheet no. / part no.	2310-3007
	supplier no.	701372
	author / date	TG / 24.06.2021

Manufacturer reserves the right to alter or amend the design, model and specification without prior notice

Looking for pricing, stock, or lifecycle information?

Click below to explore more details on WIN SOURCE:

- [⊖ View 2310-3007-XX on WIN SOURCE](#)
- [⊖ ANSMANN \(Huizhou\) Trading CO., LTD Information](#)

Optimize Your Supply Chain with WIN SOURCE Solutions

- ✓ Global Sourcing Solution
- ✓ Obsolete Management
- ✓ Cost Control Management
- ✓ Shortage Management
- ✓ Alternative Solution
- ✓ Excess Inventory Management