



**THE DATASHEET OF
5020062-XX**



battery type: Lithium Button Cell (X-type)
battery size: CR1220
chemical system: Lithium Manganese Dioxide

Conditions

nominal voltage: 3.0 V
open circuit voltage: 3.0...3.4 V (new battery)
 2.9...3.4 V (after 1 year storage at 20°C)

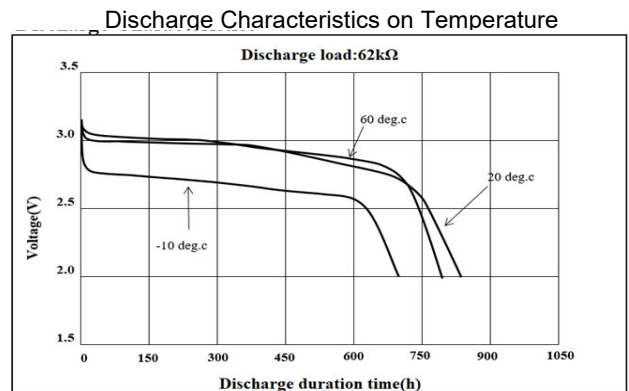
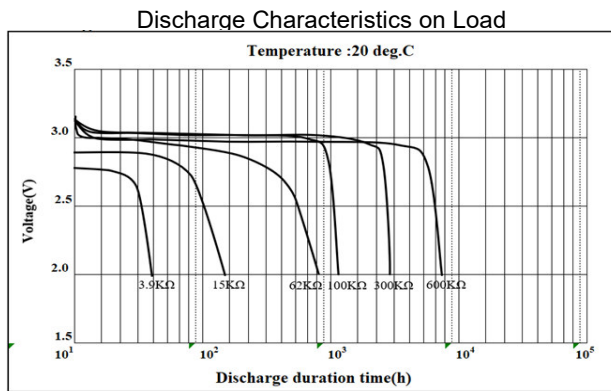
all measurements at 22 ± 2°C ambient

capacity
 rated: 38 mAh (continuous discharge at 62kΩ load; 24hours/day
 End Voltage (EV): 2.0V)
 minimum: 35 mAh (continuous discharge at 62kΩ load; 24hours/day
 EV: 2.0V)

standard discharge time
 minimum: 150 h (at 13kΩ load (for QC measurement)
 EV: 2.0V)

discharge currents
 standard: 0.1 mA
 max. recommended current under continuous discharge: 1 mA
 max. recommended current under pulse discharge: 5 mA

discharge diagrams:



shelf life: 10 years (under proper storage conditions (ta: ≤ 22°C; RH: 60 ± 15%))

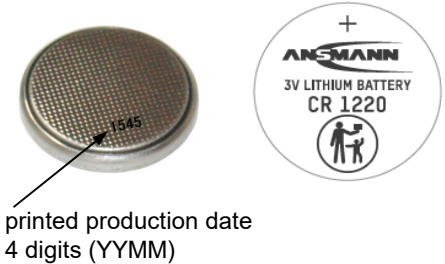
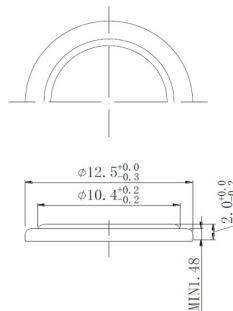
self-discharge: ≤ 2 % (per year (at 20°C ambient temperature))

operating temperature range: - 20...70 °C

storage temperature: 0...30 °C (recommended)

mechanical specifications:

outer battery dimensions
 diameter: 12.5mm +0/-0.3mm
 height: 2.0mm +0/-0.2mm



nominal weight: 0.8 g (approx.)

	ANSMANN Specifications for model:	Lithium Button Cell CR1220
	data sheet no. / part no.	
	s.n.	704245
	author / date	TG / 12.09.2023

Looking for pricing, stock, or lifecycle information?

Click below to explore more details on WIN SOURCE:

- [View 5020062-XX on WIN SOURCE](#)
- [ANSMANN \(Huizhou\) Trading CO., LTD Information](#)

Optimize Your Supply Chain with WIN SOURCE Solutions

- ✓ Global Sourcing Solution
- ✓ Obsolete Management
- ✓ Cost Control Management
- ✓ Shortage Management
- ✓ Alternative Solution
- ✓ Excess Inventory Management