



**THE DATASHEET OF
5020092-XX**



battery type: Lithium Button Cell (PH-type)
battery size: CR2430
chemical system: Lithium Manganese Dioxide

Conditions

nominal voltage: 3.0 V
open circuit voltage: 3.0...3.4 V (new battery)
 2.9...3.4 V (after 1 year storage at 20°C)

all measurements at 22 ± 2°C ambient

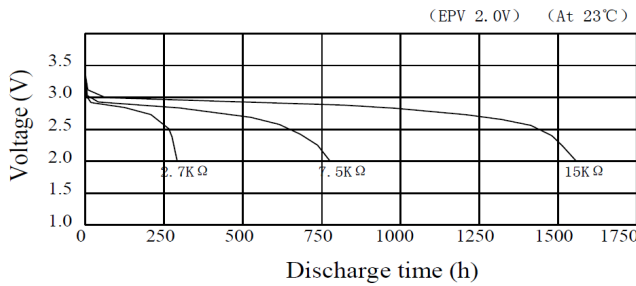
capacity rated: 300 mAh (continuous discharge at 15kΩ load; 24hours/day End Voltage (EV): 2.0V)
minimum: 270 mAh (continuous discharge at 15kΩ load; 24hours/day EV: 2.0V)

standard discharge time minimum: 130 h (at 1.5kΩ load (for QC measurement) EV: 2.0V)

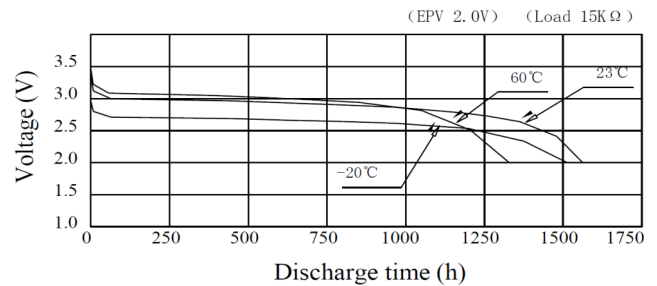
discharge currents standard: 0.2 mA
 max. recommended current under continuous discharge: 8 mA
 max. recommended current under pulse discharge: 30 mA

discharge diagrams:

Discharge Characteristics on Load



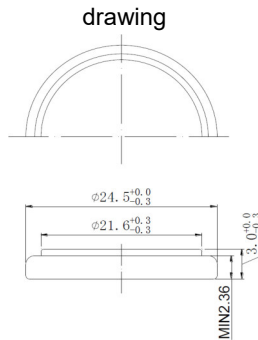
Discharge Characteristics on Temperature



shelf life: 10 years (under proper storage conditions (ta: ≤ 22°C; RH: 60 ± 15%))
self-discharge: ≤ 2 % (per year (at 20°C ambient temperature))
operating temperature range: - 30...65 °C
storage temperature: 0...30 °C (recommended)

mechanical specifications:

outer battery dimensions
 diameter: 24.5mm +0/-0.3mm
 height: 3.0mm +0/-0.3mm



printed production date
 4 digits (YYMM)
 e.g. 1806 = 2018 June



nominal weight: 4.5 g (approx.)

	ANSMANN Specifications for model:	Lithium Button Cell CR2430
	data sheet no. / part no.	
	supplier no.	704245
	author / date	TG / 02.08.2023

Looking for pricing, stock, or lifecycle information?

Click below to explore more details on WIN SOURCE:

- [View 5020092-XX on WIN SOURCE](#)
- [ANSMANN \(Huizhou\) Trading CO., LTD Information](#)

Optimize Your Supply Chain with WIN SOURCE Solutions

- ✓ Global Sourcing Solution
- ✓ Obsolete Management
- ✓ Cost Control Management
- ✓ Shortage Management
- ✓ Alternative Solution
- ✓ Excess Inventory Management