



**THE DATASHEET OF  
5021013-XX**



**battery type:** Lithium - Iron Disulfide  
**battery size:** IEC: FR03; ANSI: AAA; L92; Micro  
**chemical system:** Li-FeS<sub>2</sub>

**Conditions**

**nominal voltage:** 1.5 V  
**open circuit voltage:** 1.75...1.83 V new battery  
 1.70...1.83 V after 1 year storage at 20°C

**capacity rated:** 1200 mAh all measurements at 20°C ambient discharge at 75ohms load; 24hours/day End Voltage (EV): 0.9V

**minimum:** 1050 mAh discharge at 100mA constant current End Voltage (EV): 0.8V  
 1000 mAh discharge at 500mA constant current End Voltage (EV): 0.8V

**typical service output (new batteries)**

- ≥ 670 cycles load resistor 3.6ohms; EV: 0.9V discharge 15s/m 24h/d
- ≥ 220 min load resistor: 5.1ohms; EV: 0.9V discharge 4min/h 8h/d
- ≥ 460 min load resistor: 10ohms; EV: 0.9V discharge 1h/d
- ≥ 15 h load resistor: 20ohms; EV: 0.9V discharge 24h/d
- ≥ 60 h load resistor: 75ohms; EV: 0.9V discharge 4h/d

**internal resistance:** ≤ 450 mΩ at 1kHz, sine wave measurement full battery

**max. discharge current:** 1000 mA continuous  
 2000 mA pulse

**shelf life:** 10 years under proper storage conditions

**leakage resistance over discharge:** no leakage 20ohms continuous discharge for 48h; ta: 20°C; RH: 60±15%

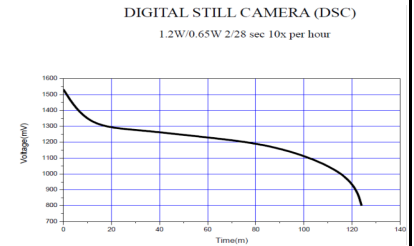
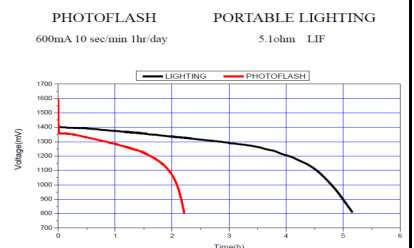
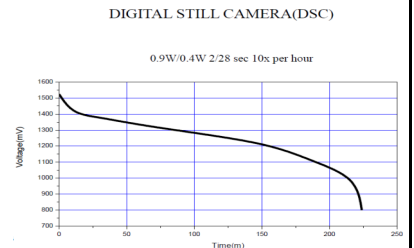
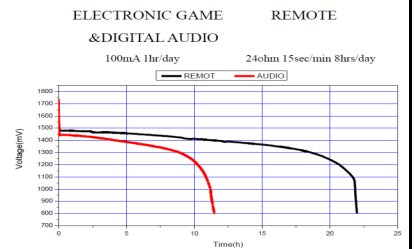
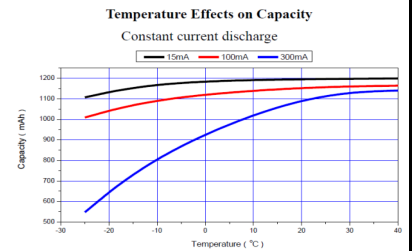
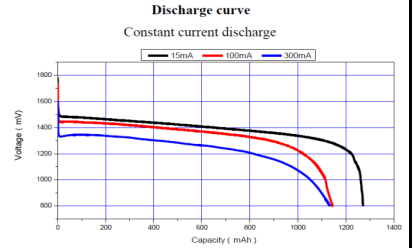
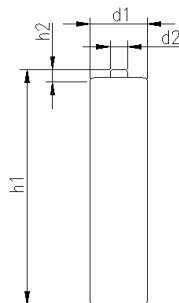
**high temperature:** no leakage store 20days at ta: 60°C; RH:90±5%

**ambient temperature range:** - 40...60 °C

**recommended storage conditions:** - 20.... 40 °C ambient temperature  
 45...75 % rel. humidity

**mechanical specifications**

cell dimensions  
 diameter d1: 10.35 - 0.4 mm  
 diameter d2: 3.8 - 0.4 mm  
 height h1: 44.2 - 0.4 mm  
 height h2: 1.2 - 0.35 mm  
 weight: 7.5 ± 1 g



	<b>ANSMANN Specifications for model:</b>	<b>Lithium Extreme Battery</b>
	data sheet no. / part no.	<b>AAA - size</b>
	s.n.	701801
	author / date	TG / 29.05.2024

## Looking for pricing, stock, or lifecycle information?

Click below to explore more details on WIN SOURCE:

- [View 5021013-XX on WIN SOURCE](#)
- [ANSMANN \(Huizhou\) Trading CO., LTD Information](#)

## Optimize Your Supply Chain with WIN SOURCE Solutions

- ✓ Global Sourcing Solution
- ✓ Obsolete Management
- ✓ Cost Control Management
- ✓ Shortage Management
- ✓ Alternative Solution
- ✓ Excess Inventory Management