



**THE DATASHEET OF  
5021023-XX**



**battery type:** Lithium - Manganese-Dioxide  
**battery size:** IEC: 6AM6; ANSI: 1604LC; LA522; 9V-Block  
**chemical system:** Li-MnO<sub>2</sub>

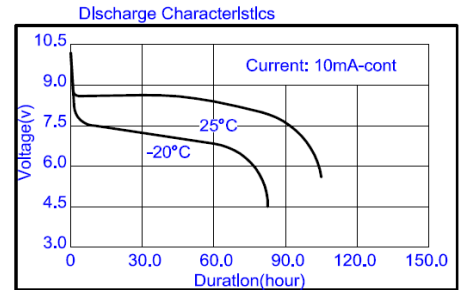
**nominal voltage:** 9 V  
**open circuit voltage:** 9.3...10.2 V (new battery)  
 9.3...10.2 V (after 1 year storage at 20°C)

**Conditions**

**capacity rated:** 1200 mAh (all measurements at 23°C ambient)  
 discharge at 1mA load; 24h/d  
 End Voltage (EV): 5.4V  
**minimum:** 1050 mAh (discharge at 10mA load; 24h/d)  
 End Voltage (EV): 5.4V  
 950 mAh (discharge at 50mA load; 24h/d)  
 End Voltage (EV): 5.4V

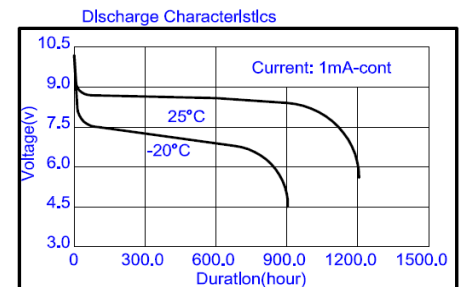
**typical service output (new batteries)**

≥ 70 h (load resistor: 600Ω; EV: 5.4V discharge 24h/d)  
 ≥ 32 h (load resistor: 270Ω; EV: 5.4V discharge 1h/d)



**max. continuous discharge current:** 115 mA

**max. peak discharge current:** 400 mA



**internal resistance:** ≤ 2 Ω (new battery) at 1kHz, sine wave measurement according to IEC 896-2

**shelf life:** 10 years (under proper storage conditions)

**leakage resistance**

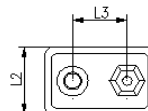
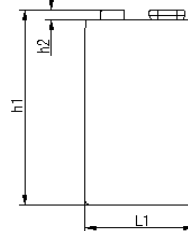
**over discharge:** no leakage (180ohms continuous discharge for 48h; ta: 20°C; RH: 60±15%)  
**high temperature:** no leakage (store 20days at ta: 60°C; RH:90±5%)


**ambient temperature range:** - 40...60 °C

**recommended storage conditions:** - 10...30 °C (ambient temperature)  
 45...75 % (rel. humidity)

**mechanical specifications**

**cell dimensions**  
 length L1: 26.5 -1 mm  
 length L2: 17.5 -2 mm  
 length L3: 12.7 ± 0.25 mm  
 height h1: 48.5 -2 mm  
 weight: 41 ± 3 g



	<b>ANSMANN Specifications for model:</b>	<b>Lithium Extreme Battery</b>
	data sheet no. / part no.	<b>9V - E-Block</b>
	supplier no.	701801
	author / date	TG / 09.08.2018

## Looking for pricing, stock, or lifecycle information?

Click below to explore more details on WIN SOURCE:

- [View 5021023-XX on WIN SOURCE](#)
- [ANSMANN \(Huizhou\) Trading CO., LTD Information](#)

## Optimize Your Supply Chain with WIN SOURCE Solutions

- ✓ Global Sourcing Solution
- ✓ Obsolete Management
- ✓ Cost Control Management
- ✓ Shortage Management
- ✓ Alternative Solution
- ✓ Excess Inventory Management