

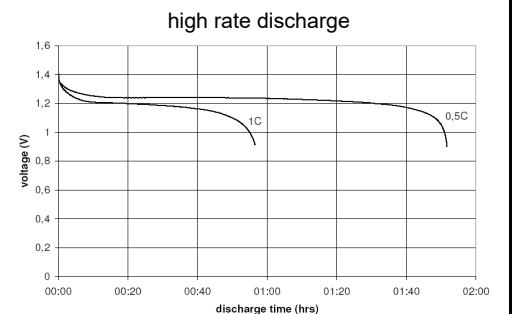
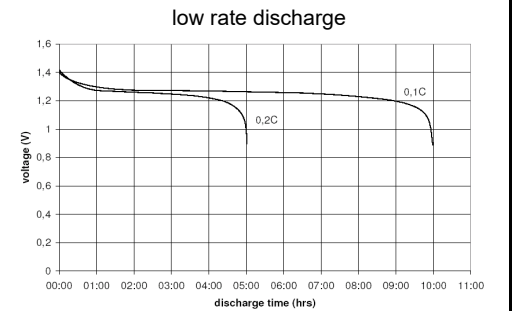
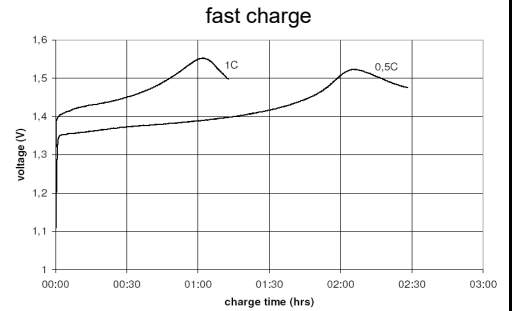
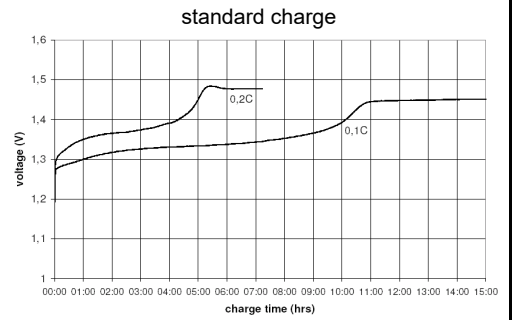


**THE DATASHEET OF
5030882-XX**



| | | Conditions |
|--|---|--|
| cell type: | | NiMH |
| cell size: | | AAA |
| nominal voltage: | 1.2 V | |
| max. charge voltage: | 1.5 V | at standard charge (0.1C / 20°C) |
| capacity | | |
| nominal: | 1000 mAh | discharge at 0.2C |
| minimum: | 950 mAh | discharge at 0.2C |
| | 840 mAh | discharge at 1C |
| | | 1.0V end discharge voltage |
| | | ta: 20°C |
| max. continuous discharge current: | 2000 mA | ta: 0...45°C |
| charge | | |
| standard charge: | current 100 mA | time 14....16hrs |
| quick charge: | 300 mA | 4hrs |
| fast charge: | 500 mA | 2.3hrs |
| recommended charge termination control parameters: | 0...5 mV 0.8...1 °C 45...50 °C | - delta V temperature rise per minute TCO (temperature cut off) |
| trickle charge current: | 5...15 mA | (recommended) |
| continuous overcharge: (less than 1 year) | ≤ 95 mA | no conspicuous deformation no leakage |
| internal resistance: (impedance) | ≤ 40 mΩ | at 1KHz battery fully charged |
| life expectancy: | ≥ 500 cycles | acc. IEC standard |
| self discharge | | |
| charge retention: | ≥ 75 % | after 12 months storage at 20°C |
| initial capacity: | ≥ 650 mAh | within 30 days after delivery discharge at 0.2C |
| ambient temperature range: | 0...45 °C 10...40 °C - 20...65 °C - 20...50 °C - 20...40 °C - 20...30 °C | standard charge fast charge discharge storage (≤3months) storage (≤6months) storage (≤24months) |

Diagrams

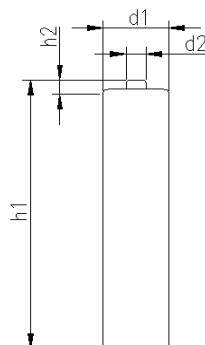


QCT1: 20/900/45
QCT2: 30/780/50

mechanical specifications

cell dimensions

| | | | |
|--------------|------|------------|----|
| diameter d1: | | 10.5 - 0.7 | mm |
| diameter d2: | max. | 3.8 | mm |
| height h1: | | 44.5 - 1.5 | mm |
| height h2: | min. | 0.8 | mm |
| weight: | | 13 ± 2 | g |



35

| | | |
|--|--|---------------------------------------|
| | ANSMANN Specifications for model: | NiMH Battery |
| | data sheet no. / part no. | AAA 1000mAh low self discharge |
| | s.n. | 701372 |
| | author / date | TG / 05.07.2023 |

Looking for pricing, stock, or lifecycle information?

Click below to explore more details on WIN SOURCE:

- ⊖ [View 5030882-XX on WIN SOURCE](#)
- ⊖ [ANSMANN \(Huizhou\) Trading CO., LTD Information](#)

Optimize Your Supply Chain with WIN SOURCE Solutions

- ✓ Global Sourcing Solution
- ✓ Obsolete Management
- ✓ Cost Control Management
- ✓ Shortage Management
- ✓ Alternative Solution
- ✓ Excess Inventory Management