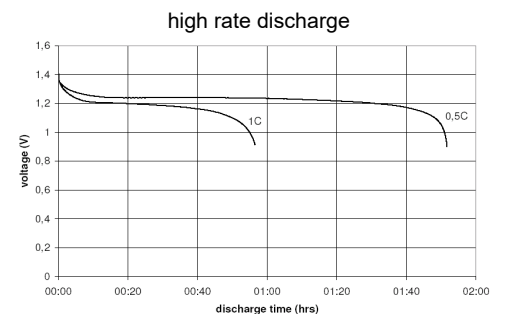
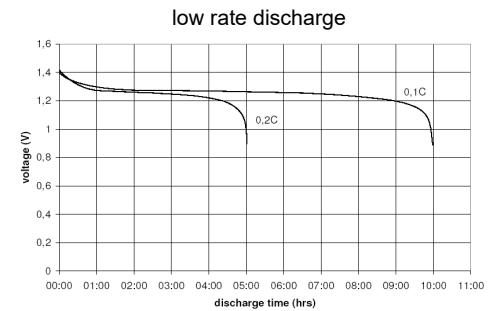
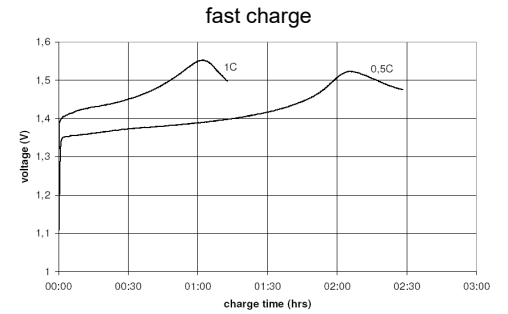
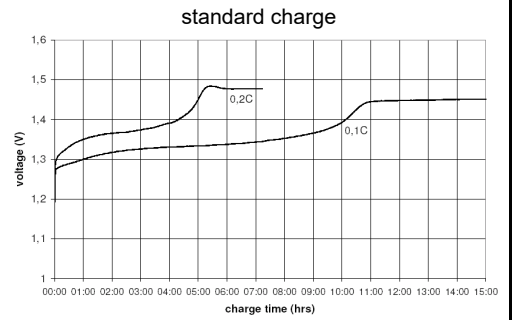


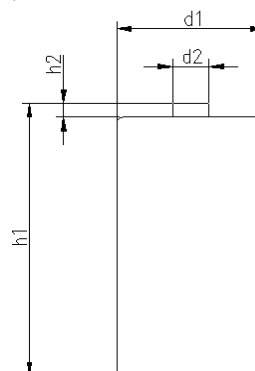
		Conditions	
cell type:		NiMH	
cell size:		D	
nominal voltage:	1.2	V	
max. charge voltage:	1.5	V	
		at standard charge (0.1C / 20°C)	
capacity			
nominal:	8500	mAh	discharge at 0.2C
minimum:	8500	mAh	discharge at 0.2C
	8000	mAh	discharge at 1C
		1.0V end discharge voltage	
		ta: 20°C	
max. continuous discharge current:	8500	mA	ta: 0...45°C
charge		current	time
standard charge:	850	mA	14....16hrs
quick charge:	1700	mA	6hrs
fast charge:	3400	mA	3hrs
recommended charge termination control parameters:	0...5	mV	- ΔV (-deltaV)
	0.8...1	°C	temperature rise per minute
	45...50	°C	TCO (temperature cut off)
trickle charge current:	50...250	mA	(recommended)
continuous overcharge: (less than 1 year)	≤ 850	mA	no conspicuous deformation no leakage
internal resistance: (impedance)	≤ 20	mΩ	at 1KHz battery fully charged
life expectancy:	≥ 500	cycles	acc. IEC standard
self discharge			
charge retention:	≥ 80	%	after 12 months storage at 20°C
initial capacity:	≥ 5500	mAh	within 30 days after delivery discharge at 0.2C
ambient temperature range:	0...45	°C	standard charge
	10...40	°C	fast charge
	- 20...65	°C	discharge
	- 20...50	°C	storage (≤3months)
	- 20...40	°C	storage (≤6months)
	- 20...30	°C	storage (≤24months)
QCT1:	20/8000/15		
QCT2:	30/7800/15		

Diagrams



mechanical specifications

cell dimensions			
diameter d1:		32.8 - 1.0	mm
diameter d2:	max.	9.5	mm
height h1:		61.5 - 2.0	mm
height h2:	min.	1.5	mm
weight:		136 ± 5	g



	ANSMANN Specifications for model:	NiMH Battery
		D - 8500mAh low self discharge
	data sheet no. / part no.	
	supplier no.	702069
author / date	TG / 18.12.2018	

Looking for pricing, stock, or lifecycle information?

Click below to explore more details on WIN SOURCE:

- [View 5035361-XX on WIN SOURCE](#)
- [ANSMANN \(Huizhou\) Trading CO., LTD Information](#)

Optimize Your Supply Chain with WIN SOURCE Solutions

- ✓ Global Sourcing Solution
- ✓ Obsolete Management
- ✓ Cost Control Management
- ✓ Shortage Management
- ✓ Alternative Solution
- ✓ Excess Inventory Management