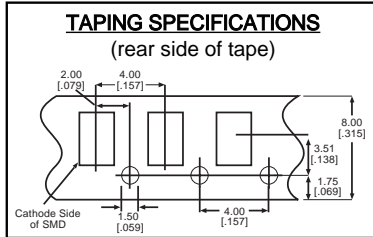
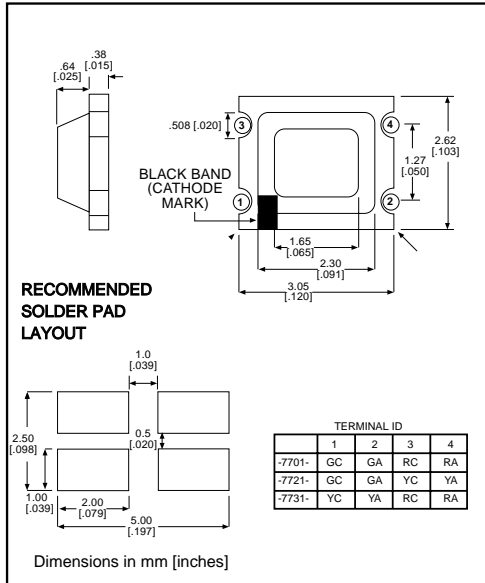




Surface Mount LED Bi-Color

Dialight

597-77x1-1xx



Features

- Compatible with automatic placement equipment
- Compatible with infrared reflow processes
- Packaged on 8mm tape, 7" reels (meets EIA-481-1 standard)
- Helps to eliminate mixed technology PC board processing
- Compatible with Dialight's Optopipe™ Series light pipes

PART NO.* COLOR

- 597-7701-1xx Red/Green
- 597-7721-1xx Yellow/Green
- 597-7731-1xx Red/Yellow

*ORDERING INFORMATION

597-77x1-1xx

packaging option

02	20 pieces on tape
07	7" reel, 3000 pcs/reel

ABSOLUTE MAXIMUM RATINGS (T_A=25°C)

	Red/Green -7701	Yellow/Green -7721	Red/Yellow -7731
Power Dissipation (mW)	65/65	70/65	65/70
Forward Current (mA)	25	25	25
Derating (mA/°C)	.33	.33	.33
Peak Current (mA) <i>Pulse width = 1 μs</i>	100	100	100
Operating Temperature (°C)	-25/+75	-25/+75	-25/+75
Storage Temperature (°C)	-30/+85	-30/+85	-30/+85
Soldering Profile	240°C to 260°C for 10 seconds		

Solder Adherence per MIL-STD-202E, Method 208C

OPERATING CHARACTERISTICS (T_A=25°C)

		Red/Green -7701	Yellow/Green -7721	Red/Yellow -7731
Luminous Intensity (mcd)	Min.	1.6/6	3/6	1.6/3
	Typical	4/12	8/12	4/8
Peak Wavelength (nm)	Typical	630/565	585/565	630/585
Viewing Angle (2θ ½)	Typical	170°	170°	170°
Forward Voltage (V)	Typical	2/2	2.1/2	2/2.1
	Max.	2.6/2.6	2.8/2.6	2.6/2.8
Reverse Voltage (V), I _R =10μA	Min.	4	4	4

θ ½ is the off axis angle at which the luminous intensity is half the axial luminous intensity






Looking for pricing, stock, or lifecycle information?

Click below to explore more details on WIN SOURCE:

 [View 597-7721-107 on WIN SOURCE](#)

 [Dialight Information](#)

Optimize Your Supply Chain with WIN SOURCE Solutions

-  Global Sourcing Solution
-  Obsolete Management
-  Cost Control Management
-  Shortage Management
-  Alternative Solution
-  Excess Inventory Management