



ULTRA LOW NOISE, HIGH IP3

Monolithic Amplifier

CMA-545+

50Ω 0.05 to 6 GHz

THE BIG DEAL

- Ceramic, Hermetic, Nitrogen Filled
- Ultra Low Noise Figure, 0.8 dB Typ. at 1 GHz
- High IP3, +35 dBm Typ. 1 GHz
- Gain, 20 dB Typ. at 1 GHz
- Output Power, Up to +20 dBm Typ.
- Single Positive Supply Voltage, +3 V
- Small Size, 3x3x1.14 mm



Generic photo used for illustration purposes only

CASE STYLE: DL1721

+RoHS Compliant

The +Suffix identifies RoHS Compliance. See our website for methodologies and qualifications

MIL SCREENING AVAILABLE
PLEASE CONSULT APPLICATIONS DEPT.

APPLICATIONS

- Cellular
- ISM
- GSM
- WCDMA
- LTE
- WiMAX
- WLAN

PRODUCT OVERVIEW

Mini-Circuits CMA-545+ delivers a unique combination of ultra low noise and high IP3 performance, ideal for sensitive receiver applications. The E-pHEMT amplifier die is bonded to a multilayer integrated LTCC substrate, and then hermetically sealed under a controlled nitrogen atmosphere with gold-plated covers and eutectic AuSn solder. As a result, this rugged amplifier is capable of meeting MIL requirements for gross leak, fine leak, thermal shock, vibration, acceleration, mechanical shock, and HTOL. The testing can be done if requested. The CMA-545+ operates on a single +3 V supply and is internally matched to 50Ω, with no external matching components required.

KEY FEATURES

Feature	Advantages
Ultra Low Noise: 0.8 dB NF at 1 GHz	Industry Leading Noise Figure, measured in a 50Ω environment – without any external matching.
High IP3, +35 dBm IP3 at 1 GHz	Combining Low Noise and High IP3 makes this MMIC amplifier ideal for Low Noise Receiver Front End (RFE) because it gives the user advantages at both ends of the dynamic range, sensitivity & high level operation.
Output Power, +20 dBm at 1 GHz	The CMA-545+ maintains consistent output power capability over the full operating temperature range making it ideal to be used in remote applications such as LNB's as the L Band driver stage.
BroadBand, 0.05 to 6.0 GHz	Broadband covering primary wireless communications bands: Cellular, PCS, LTE, WiMAX.
Max Input Power, +20 dBm	Ruggedized design operates up to input powers often seen at Receiver inputs. Can operate up to +20 dBm input without the need of an external limiter.
Internally Matched	No external matching elements required to achieve the advertised noise and output power over the full band.
Ceramic Hermetic Package	Low inductance, repeatable performance, excellent reliability
High Reliability	Small signal operating current of 80 mA nominal maintains junction temperatures typically below +130°C at +105°C package terminals.

REV. E
ECO-025417
CMA-545+
MCL NY
250502





ULTRA LOW NOISE, HIGH IP3

Monolithic Amplifier

CMA-545+

50Ω 0.05 to 6 GHz

ELECTRICAL SPECIFICATIONS¹ AT +25°C, Z₀=50Ω, UNLESS NOTED OTHERWISE

Parameter	Condition (GHz)	Min.	Typ.	Max.	Units
Frequency Range		0.05		6.0	GHz
Noise Figure	0.05		1.3	1.4	dB
	0.5		0.8		
	1.0		0.8		
	2.0		1.2		
	3.0		1.3		
	4.0		1.7		
	5.0		2.0		
	6.0		2.5		
Gain	0.05	12.7	26.2	15.6	dB
	0.5		23.4		
	1.0		19.7		
	2.0		14.8		
	3.0		12.0		
	4.0		9.7		
	5.0		8.4		
	6.0		6.6		
Input Return Loss	0.05-0.5		9.0		dB
	0.5-6		7.0		
Output Return Loss	0.05		13.0		dB
	0.1-3		14.0		
	3-6		12.0		
Output Power @ 1 dB Compression ²	0.05	+18.3	+19.9		dBm
	0.5		+19.2		
	1.0		+19.0		
	2.0		+20.0		
	3.0		+20.3		
	4.0		+20.3		
	5.0		+21.5		
	6.0		+21.0		
Output IP3	0.05		+32.0		dBm
	0.5		+34.0		
	1.0		+35.0		
	2.0		+37.1		
	3.0		+38.0		
	4.0		+37.8		
	5.0		+38.4		
	6.0		+36.6		
DC Voltage (V _d)		+2.8	+3.0	+3.2	V
DC Current (I _d) ²		65	80	98	mA
DC Current (I _{Rbias})			5.6		mA
DC Current Variation vs. Temperature ³			-0.121		mA/°C
Thermal Resistance			116		°C/W

1. Measured on Mini-Circuits Characterization test board TB-631+. See Characterization Test Circuit (Fig. 1).

2. Current increases at P1dB.

3. (Current at +85°C - Current at -45°C)/130





ULTRA LOW NOISE, HIGH IP3

Monolithic Amplifier

CMA-545+

50Ω 0.05 to 6 GHz

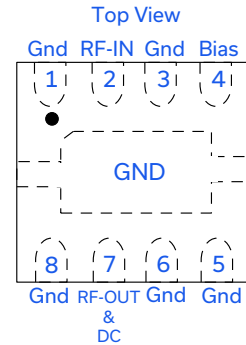
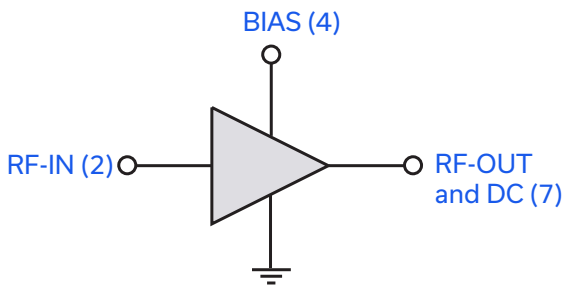
ABSOLUTE MAXIMUM RATINGS⁴

Parameter	Ratings
Operating Temperature ⁵	-55°C to +105°C
Storage Temperature	-65°C to +125°C
Channel Temperature	+150°C
DC Voltage (Pad 7)	+5 V
Power Dissipation	500 mW
DC Current (Pad 6)	160 mA
Bias Current (Pad 4)	10 mA
Input Power	+20 dBm

4. Permanent damage may occur if any of these limits are exceeded. These ratings are not intended for continuous normal operation.

5. Defined with reference to ground pad temperature.

SIMPLIFIED SCHEMATIC AND PAD DESCRIPTION



Function	Pin Number	Description (See Application Circuit, Fig. 2)
RF-IN	2	RF input pad
RF-OUT & DC	7	RF output pad (connected to RF-OUT via blocking external cap C2, and Supply voltage V_s via RF Choke L1)
BIAS	4	Bias pad (connected to V_s via Rbias)
GND	1,3,4,5,6,8, Bottom Center Paddle	Connections to ground



ULTRA LOW NOISE, HIGH IP3

Monolithic Amplifier

CMA-545+

50Ω 0.05 to 6 GHz

CHARACTERIZATION TEST CIRCUIT

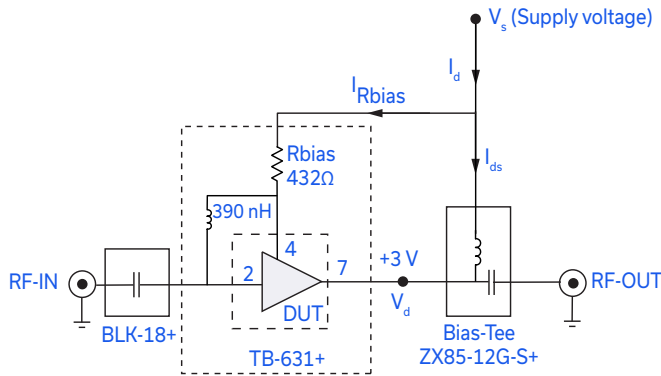


Fig 1. Block Diagram of Test Circuit used for characterization. (DUT soldered on Mini-Circuits Characterization Test Board TB-631+) Gain, Output Power at 1 dB Compression (P1dB), Output IP3 (OIP3) are measured using R&S Network Analyzer ZVA-24. Noise Figure measured using Agilent's N5242A PNA-X microwave network analyzer.

Conditions:

1. Gain: $P_{IN} = -25$ dBm
2. Output IP3 (OIP3): Two tones, spaced 1 MHz apart, 0 dBm/tone at output.
3. V_s adjusted for +3 V at device (V_d), compensating loss of bias tee.

RECOMMENDED APPLICATION CIRCUIT

(Refer to evaluation board for PCB Layout and component values)

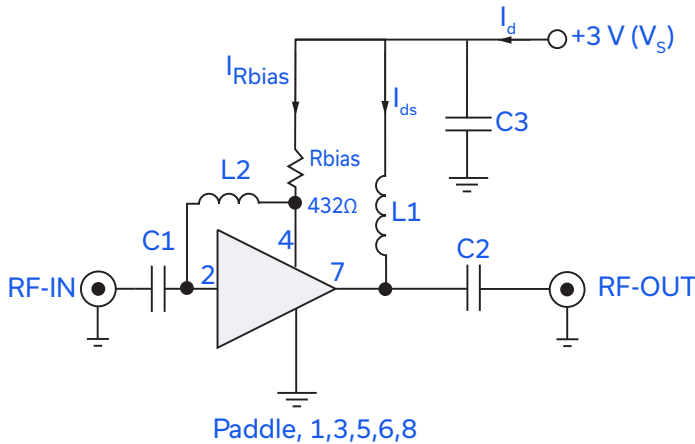
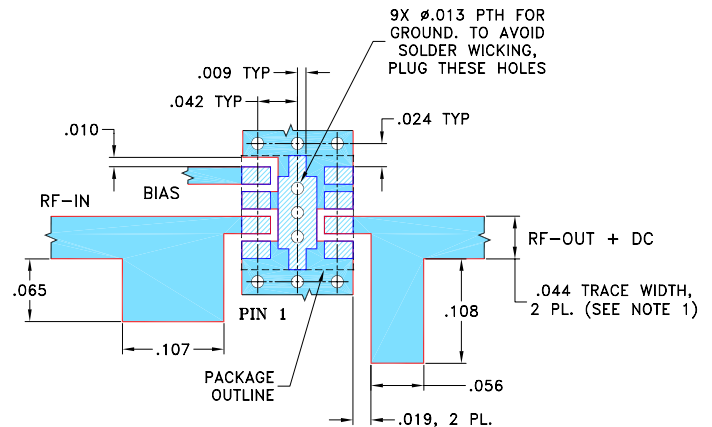


Fig 2. Recommended Application Circuit
Note: Resistance of L1, 0.1-0.2Ω typically. For component values, please see evaluation board drawing.

SUGGESTED PCB LAYOUT (PL-365)

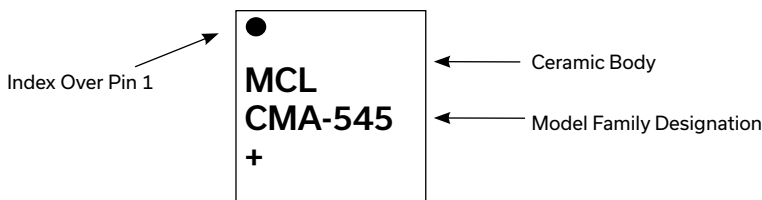


NOTES:

1. TRACE WIDTH IS SHOWN FOR ROGERS RO4350B WITH DIELECTRIC THICKNESS .020" ± .0015"; COPPER: 1/2 OZ. EACH SIDE. FOR OTHER MATERIALS TRACE WIDTH AND GAP MAY NEED TO BE MODIFIED.
2. BOTTOM SIDE OF THE PCB IS CONTINUOUS GROUND PLANE.

- DENOTES PCB COPPER LAYOUT WITH SMOBC (SOLDER MASK OVER BARE COPPER)
- DENOTES COPPER LAND PATTERN FREE OF SOLDER MASK

PRODUCT MARKING



Markings in addition to model number designation may appear for internal quality control purposes.





ULTRA LOW NOISE, HIGH IP3

Monolithic Amplifier

CMA-545+

50Ω 0.05 to 6 GHz

ADDITIONAL DETAILED TECHNICAL INFORMATION IS AVAILABLE ON OUR DASHBOARD. [CLICK HERE](#)

Performance Data & Graphs	Table Graphs S-Parameter (S2P Files) Data Set (.zip file)
Case Style	DL1721 Ceramic package, exposed paddle, Terminal Finish: Ni,Pd,Au
Tape & Reel Standard Quantities Available on Reel	F66-1 7" Reels with 20, 50, 100, 200, 500, 1000 & 2000 devices
Suggested Layout for PCB Design	PL-365
Evaluation Board	TB-631+
Environmental Ratings	ENV68

ESD RATING

Human Body Model (HBM): Class 1A (250 V to < 500 V) in accordance with ANSI/ESD STM 5.1 - 2001
Machine Model (MM): Class M1 (< 100 V) in accordance with ANSI/ESD STM5.2-1999; passes 40 V

MSL RATING

Moisture Sensitivity: MSL1 (these parts are hermetic, air cavity and therefore, MSL ratings do not strictly apply. For handling purpose, use MSL1)

QUALIFICATION TESTING

The table below shows the initial qualification testing performed. If required, parts can be subjected to 100% screening and qualifications testing per MIL standard requirement.

	Test Description	Test Method/Process	Results
1	Hermeticity (fine and gross leak)	MIL-STD-202 Method 112, Cond. C & D	Pass
2	Acceleration, 30Kg, Y1 Direction	MIL-STD-883 Method 2001 Cond. E	Pass
3	Vibration , 10-2000Hz sine, 20g, 3 axis	MIL-STD-202 Method 204, Cond. D	Pass
4	Mechanical shock	MIL-STD-202 Method 213, Cond . A	Pass
5	PIND 20G's @130 Hz	MIL-STD-750 Method 2052.2	Pass
6	Temp Cycle -55C/+125C, 1000 Cycles	MIL-STD-202 Method 107	Pass
7	Autoclave, 121C, RH 100%, 15 Psig, 96 hrs	JESD22-A102C	Pass
8	HTOL, 1000hrs, 105C at rated Voltage condition	MIL-STD-202 Method 108, Cond . D	Pass
9	Bend Test	JESD22-B113	Pass
10	Resistance to soldering heat, 3x reflow, 260C peak	JESD22-B102	Pass
11	Drop Test	JESD22-B111	Pass
12	Adhesion Strength	Push Test>10 lb	Pass

NOTES

- A. Performance and quality attributes and conditions not expressly stated in this specification document are intended to be excluded and do not form a part of this specification document.
- B. Electrical specifications and performance data contained in this specification document are based on Mini-Circuits' applicable established test performance criteria and measurement instructions.
- C. The parts covered by this specification document are subject to Mini-Circuits' standard limited warranty and terms and conditions (collectively, "Standard Terms"); Purchasers of this part are entitled to the rights and benefits contained therein. For a full statement of the standard terms and the exclusive rights and remedies thereunder, please visit Mini-Circuits' website at www.minicircuits.com/terms/viewterm.html



Looking for pricing, stock, or lifecycle information?

Click below to explore more details on WIN SOURCE:

 [View CMA-545+](#) on WIN SOURCE

 [Mini-Circuits](#) Information

Optimize Your Supply Chain with WIN SOURCE Solutions

-  Global Sourcing Solution
-  Obsolete Management
-  Cost Control Management
-  Shortage Management
-  Alternative Solution
-  Excess Inventory Management